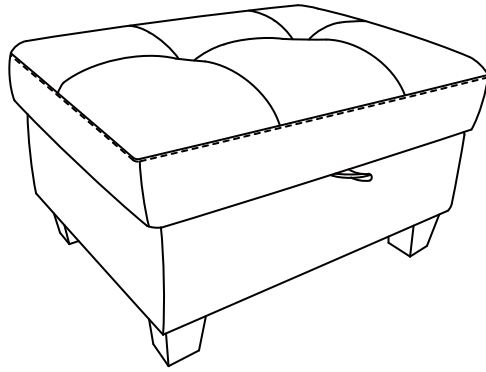


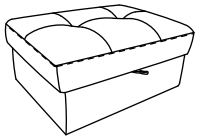
# ASSEMBLY INSTRUCTION

ITEM NO.: F8001-O / F8002-O

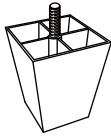


## PARTS LIST

A x1



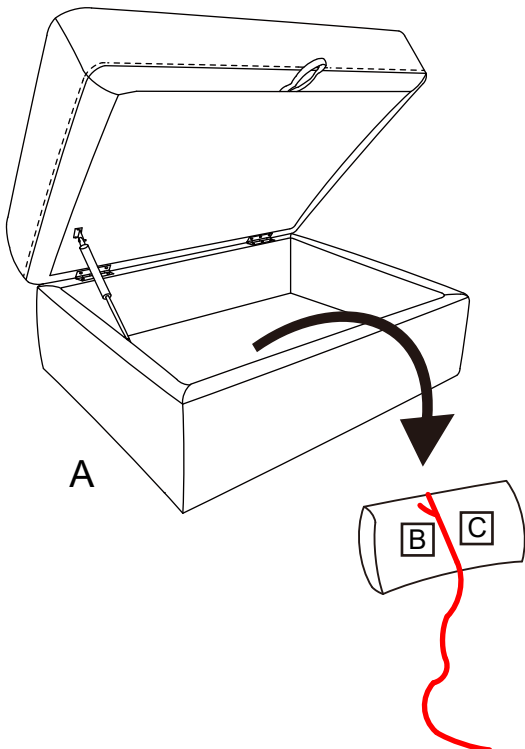
B x4



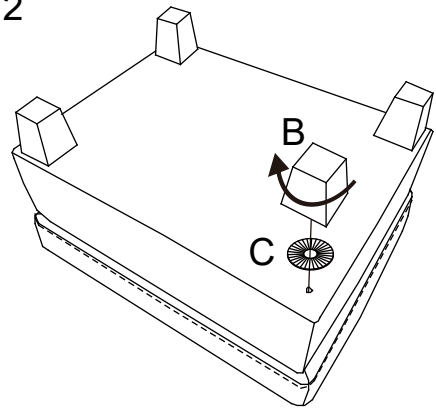
C x4



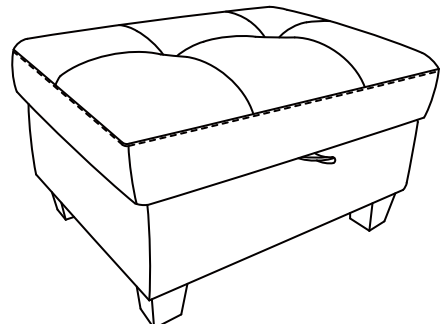
### STEP 1



### STEP 2

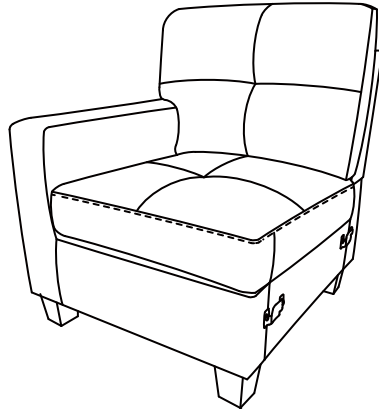


### STEP 3



# ASSEMBLY INSTRUCTION

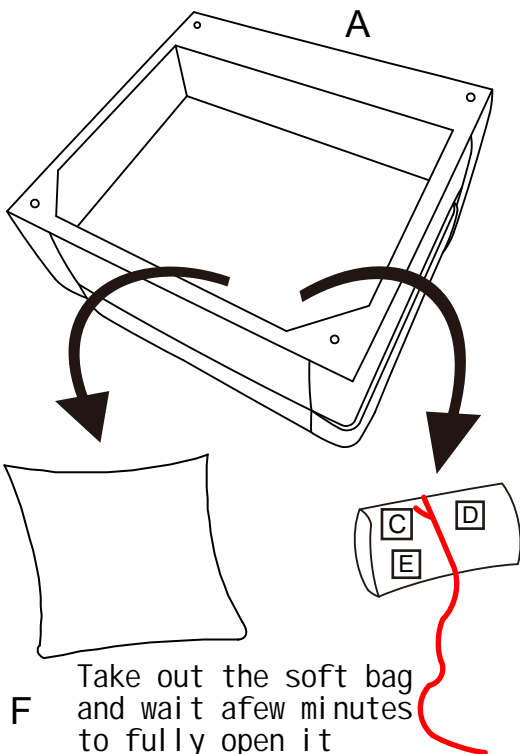
ITEM NO.: F8001L / F8002L



## PARTS LIST

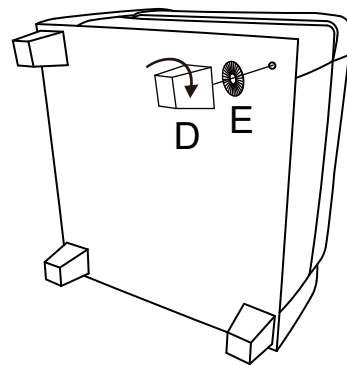
<b>A</b> x1	<b>B</b> x1	<b>C</b> x2	<b>D</b> x4	<b>E</b> x4	<b>F</b> x1

### STEP 1

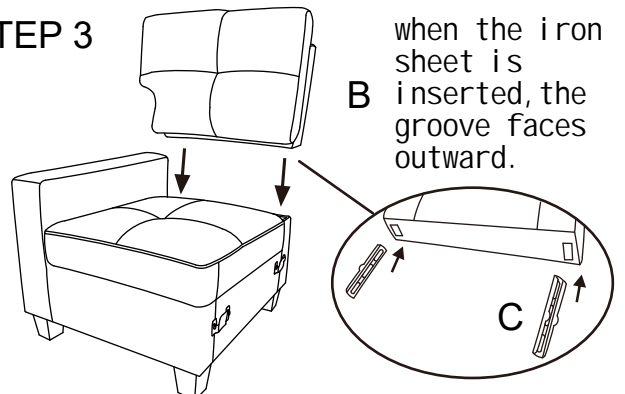


**F** Take out the soft bag and wait a few minutes to fully open it before using

### STEP 2



### STEP 3



when the iron sheet is inserted, the groove faces outward.