

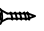
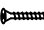
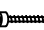


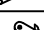
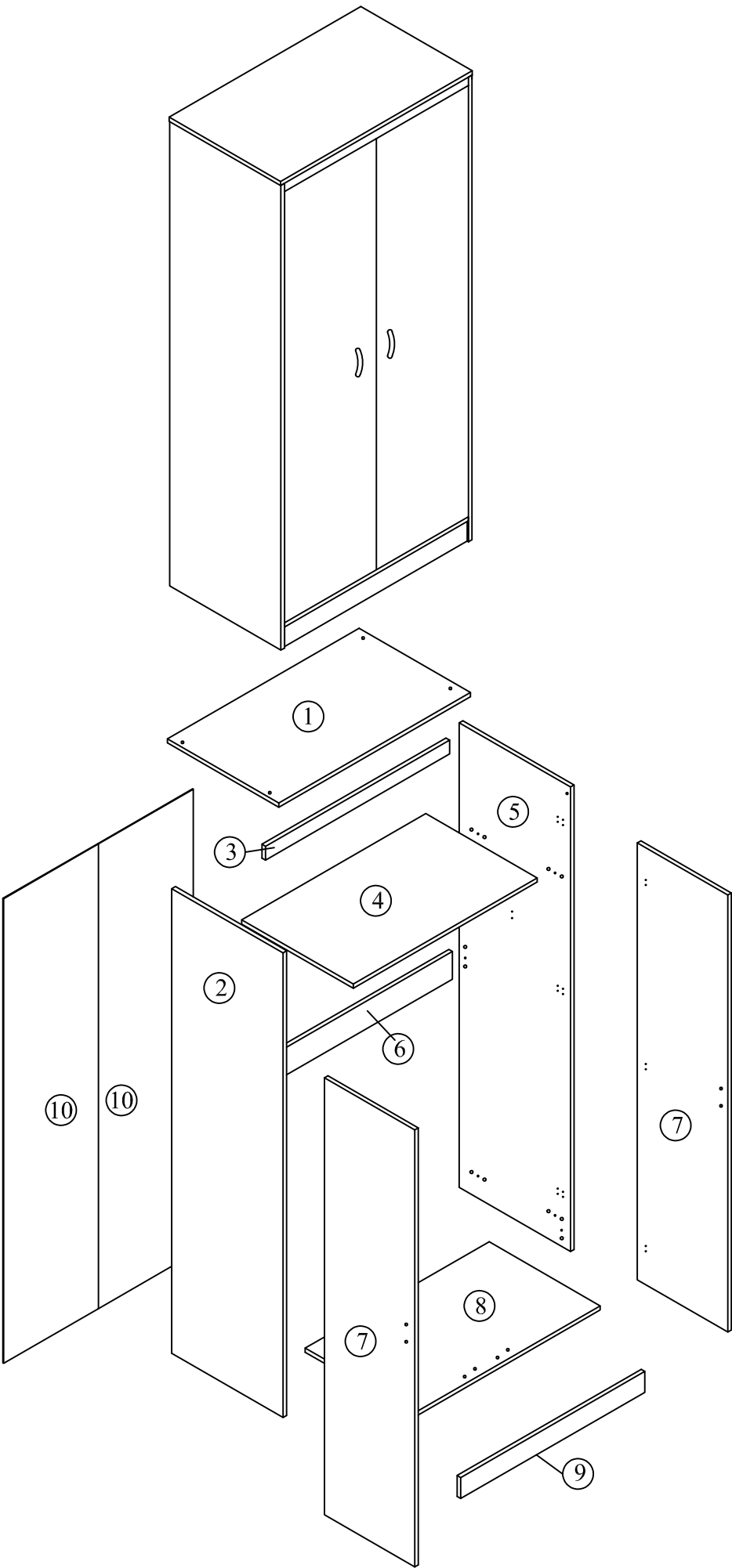


Assembly Instructions

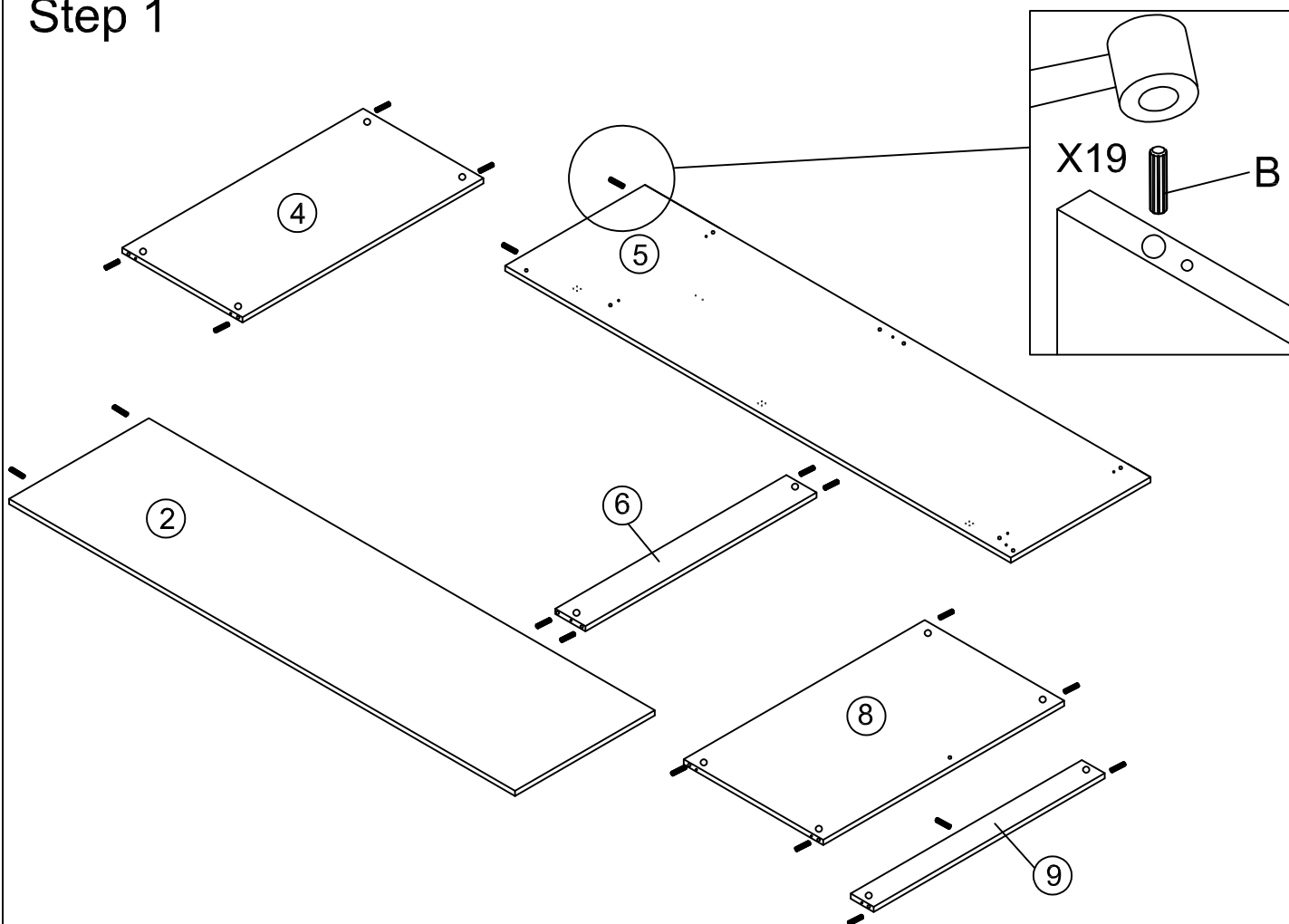
Model : RB-8001

Part List		QTY
1	Top Panel	1
2	Left Side Panel	1
3	Top Support Panel	1
4	Middle Support Panel	1
5	Right Side Panel	1
6	Back Support Panel	1
7	Left/Right Door Panel	2
8	Bottom Panel	1
9	Legs Panel	1
10	Back Panel	2

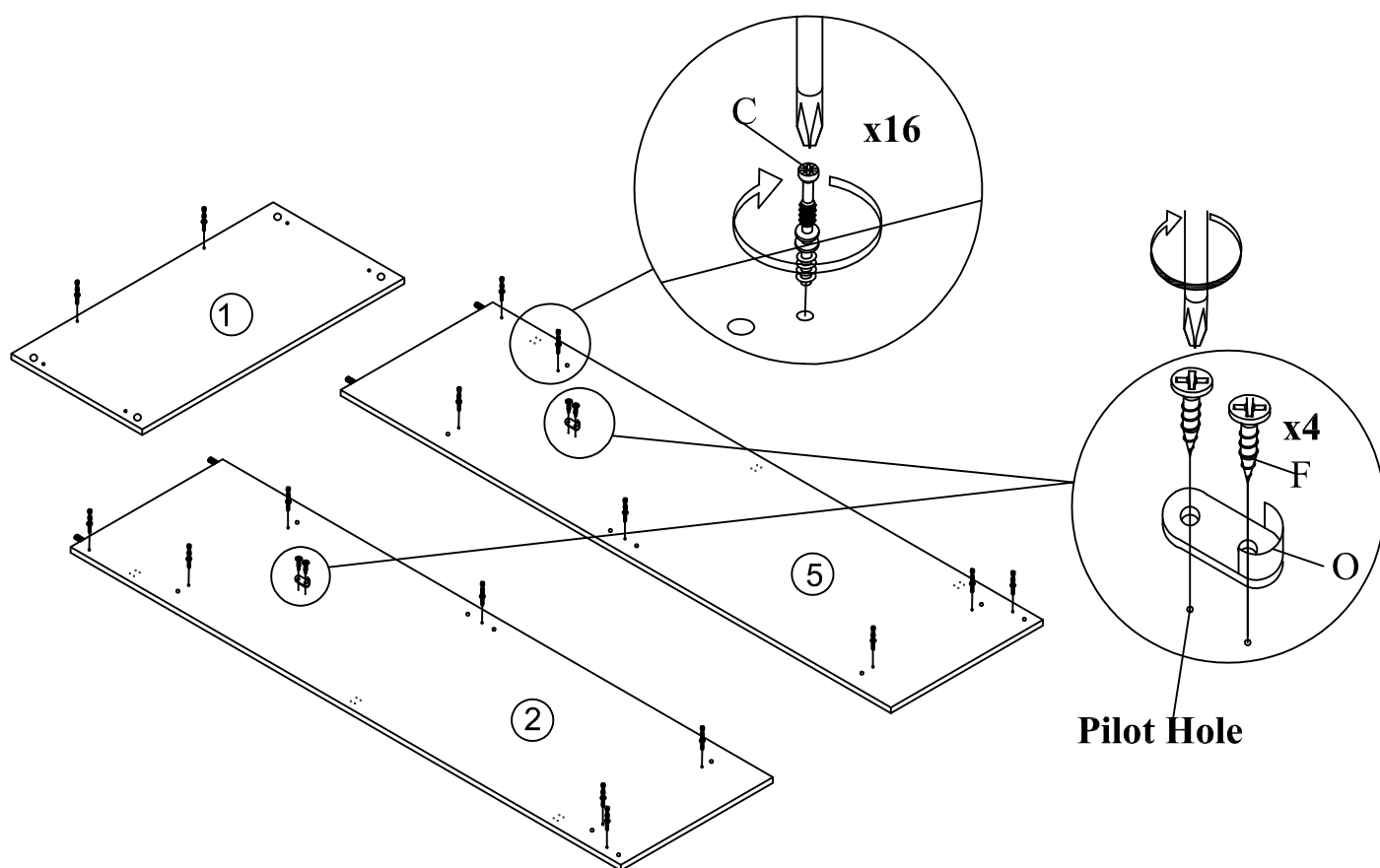
Hardware List			QTY
A		White Nail Leg	5
B		Dowel	19
C		Mini Fix Bolt	16
D		Mini Fix Housing	16
E		Mini Fix Cap	16
F		CSK Screw M3.5x16mm	40
G		Handle Screw M3.5x20mm	4
H		JCBC W Screw M6x40 mm	4
I		Allen Key M4	1
J		Nail	49
K		Stopper	2
L		Handle	2
M		Hinges 7/8	6
N		Pipe	1
O		U bracket	2



Step 1

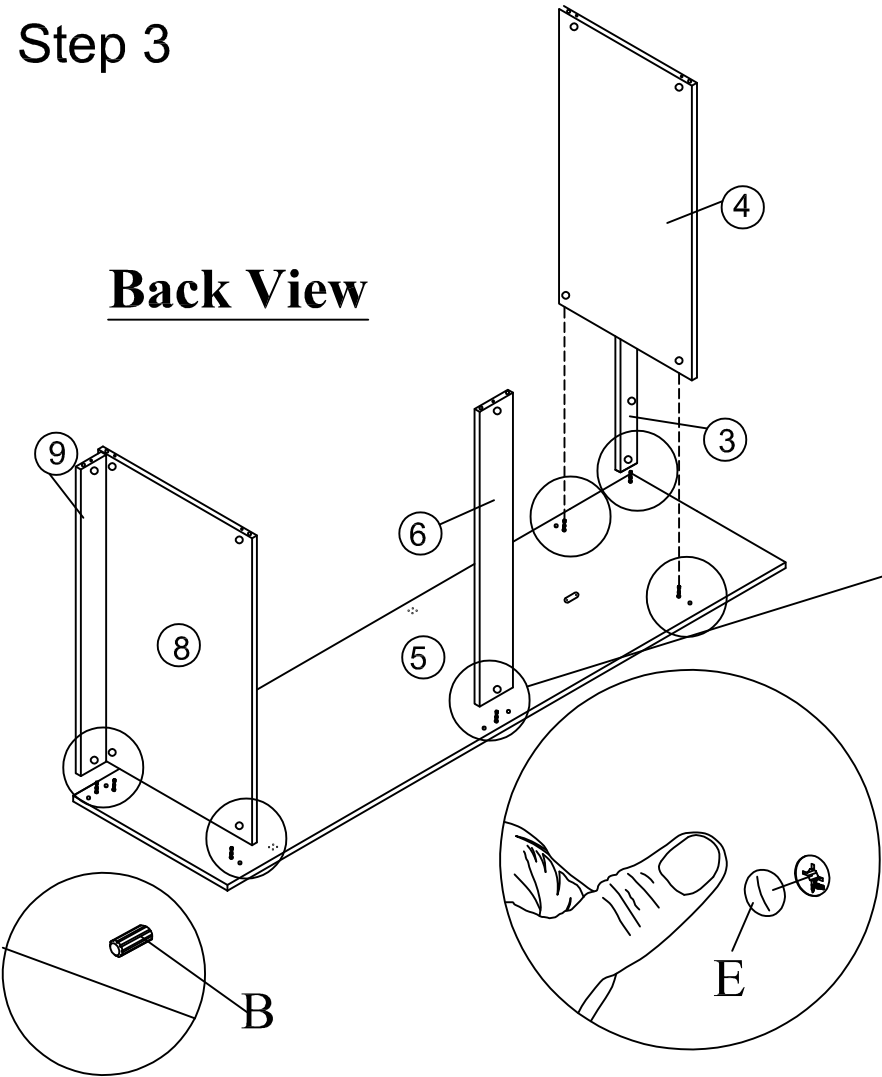


Step 2

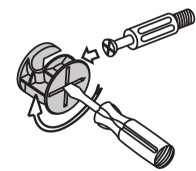


Step 3

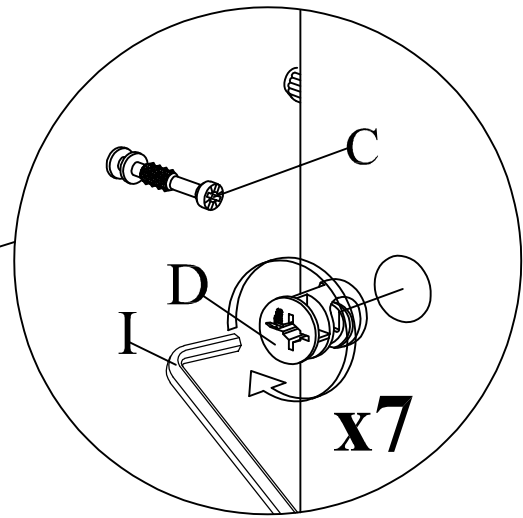
Back View



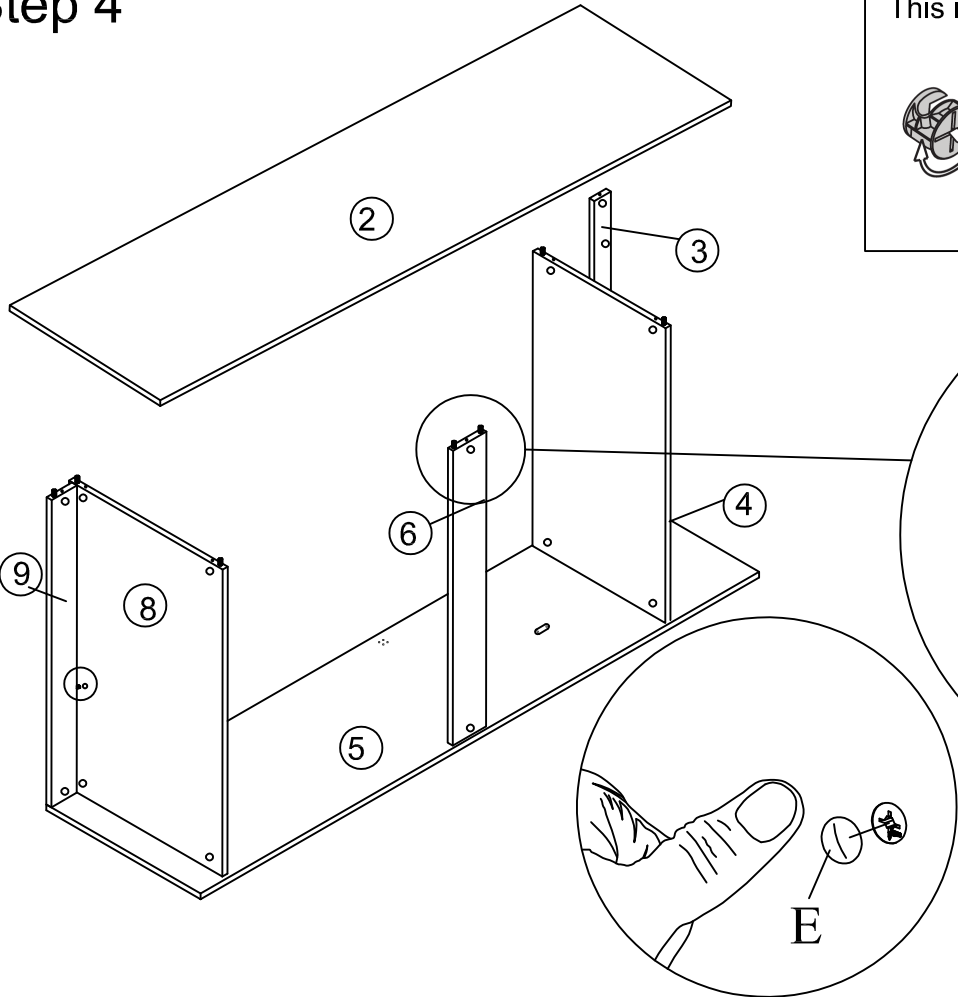
This is how a mini fix works...



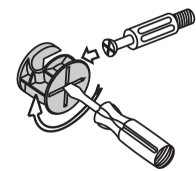
The head of the mini fix housing goes into the open mouth of the mini fix bolt. You then turn the mini fix housing so it tightens over the mini fix bolt.



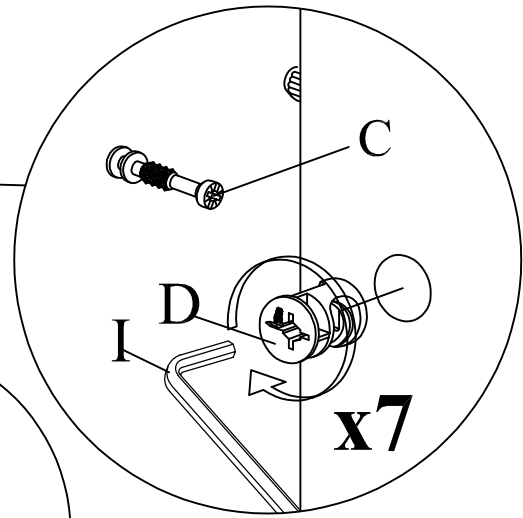
Step 4



This is how a mini fix works...

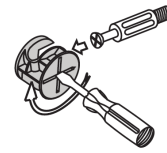


The head of the mini fix housing goes into the open mouth of the mini fix bolt. You then turn the mini fix housing so it tightens over the mini fix bolt.

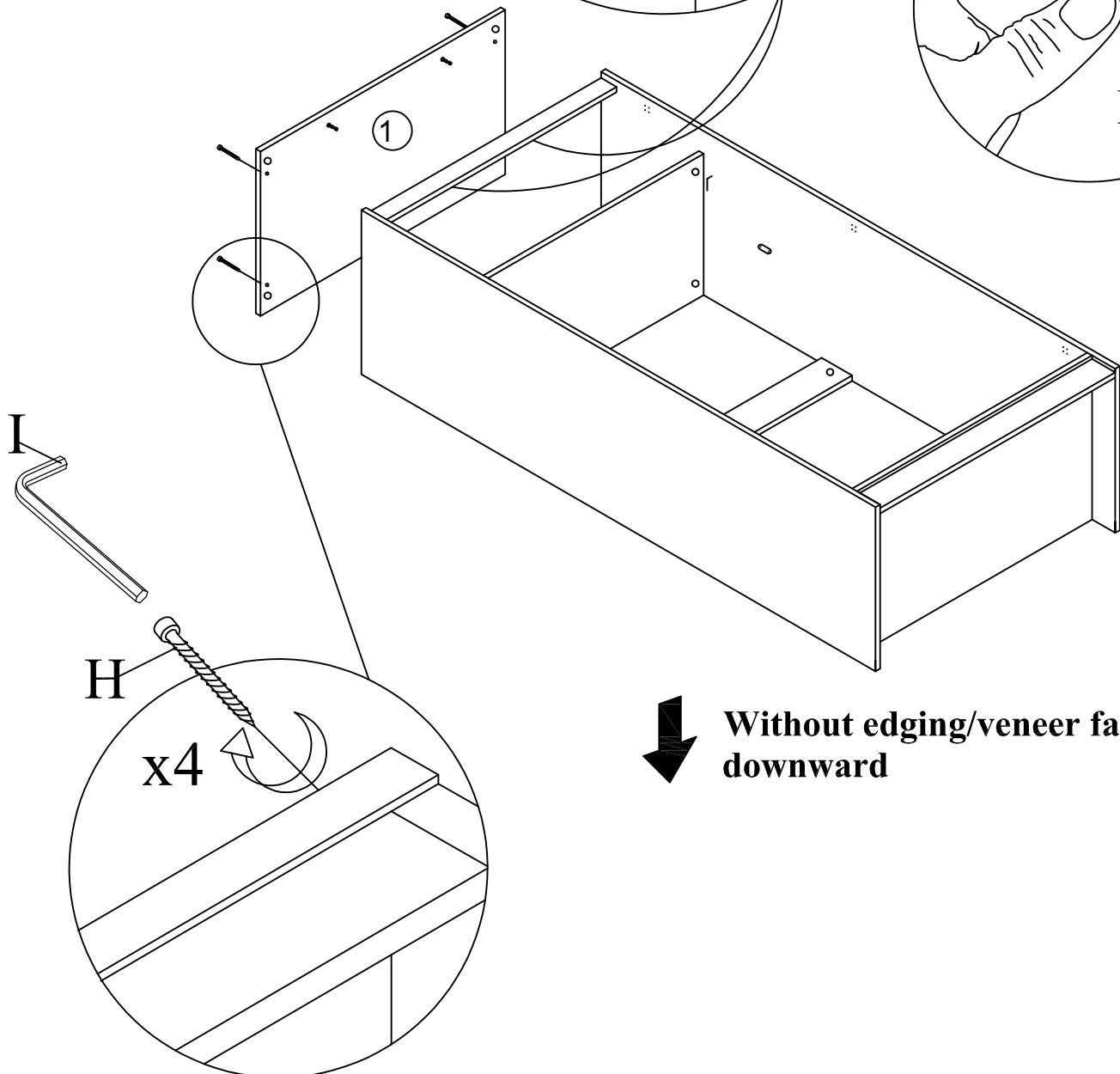
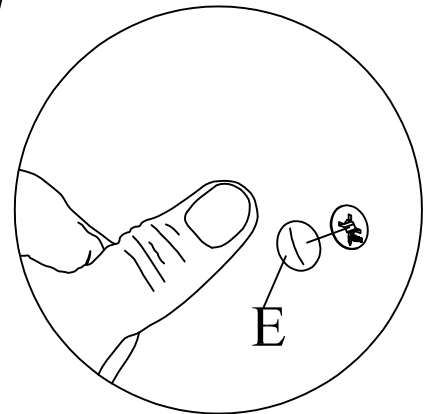
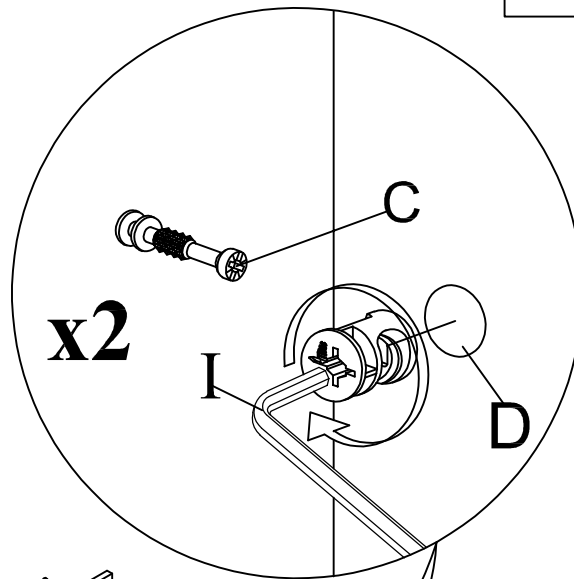


Step 5

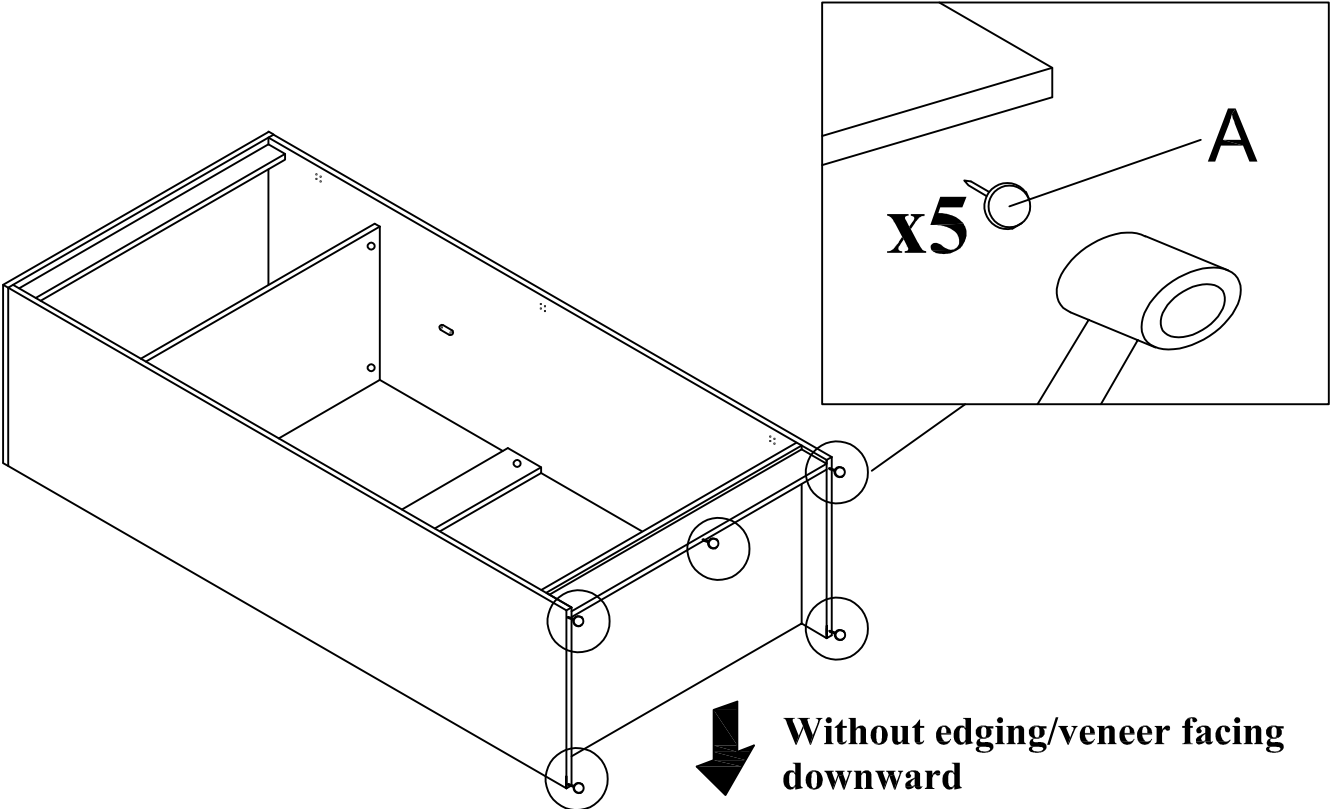
This is how a mini fix works...



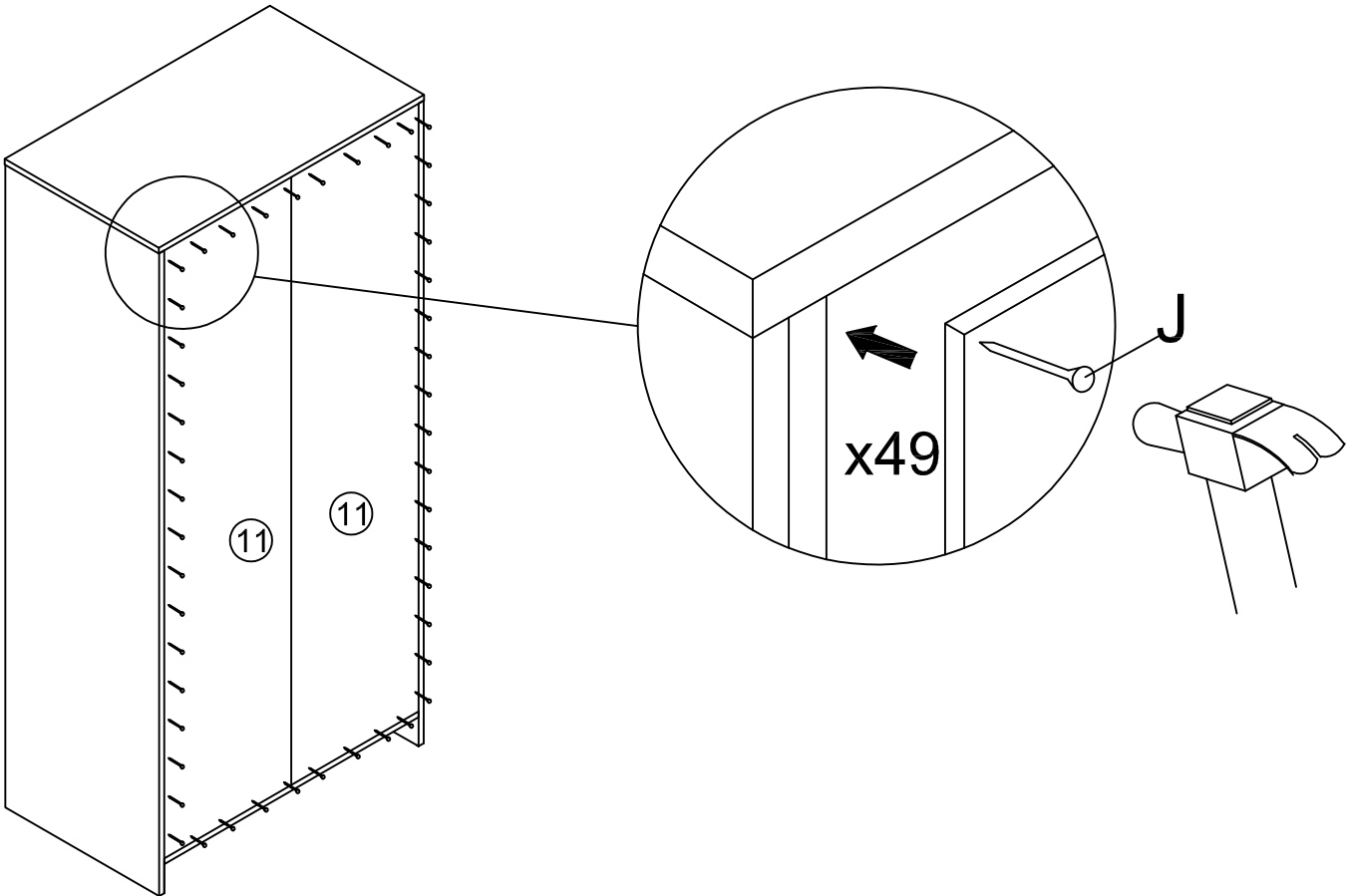
The head of the mini fix housing goes into the open mouth of the mini fix bolt. You then turn the mini fix housing so it tightens over the mini fix bolt.



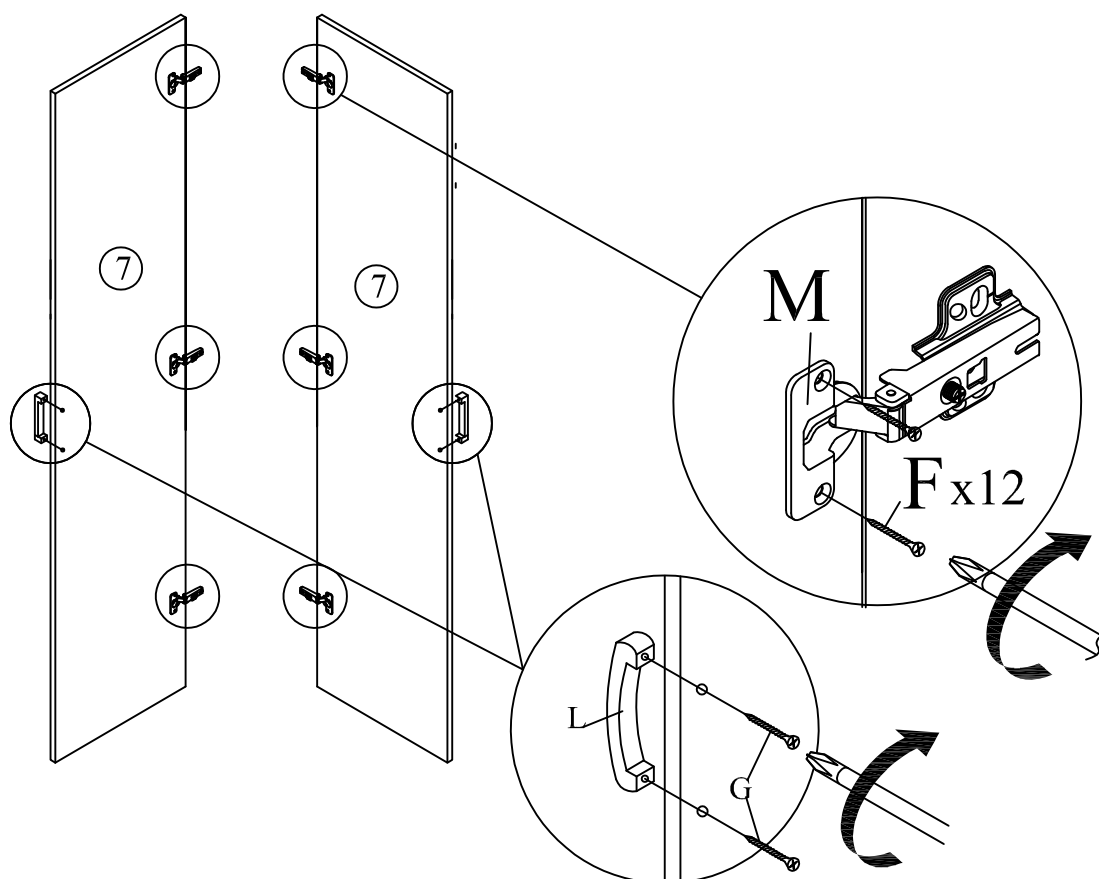
Step 6



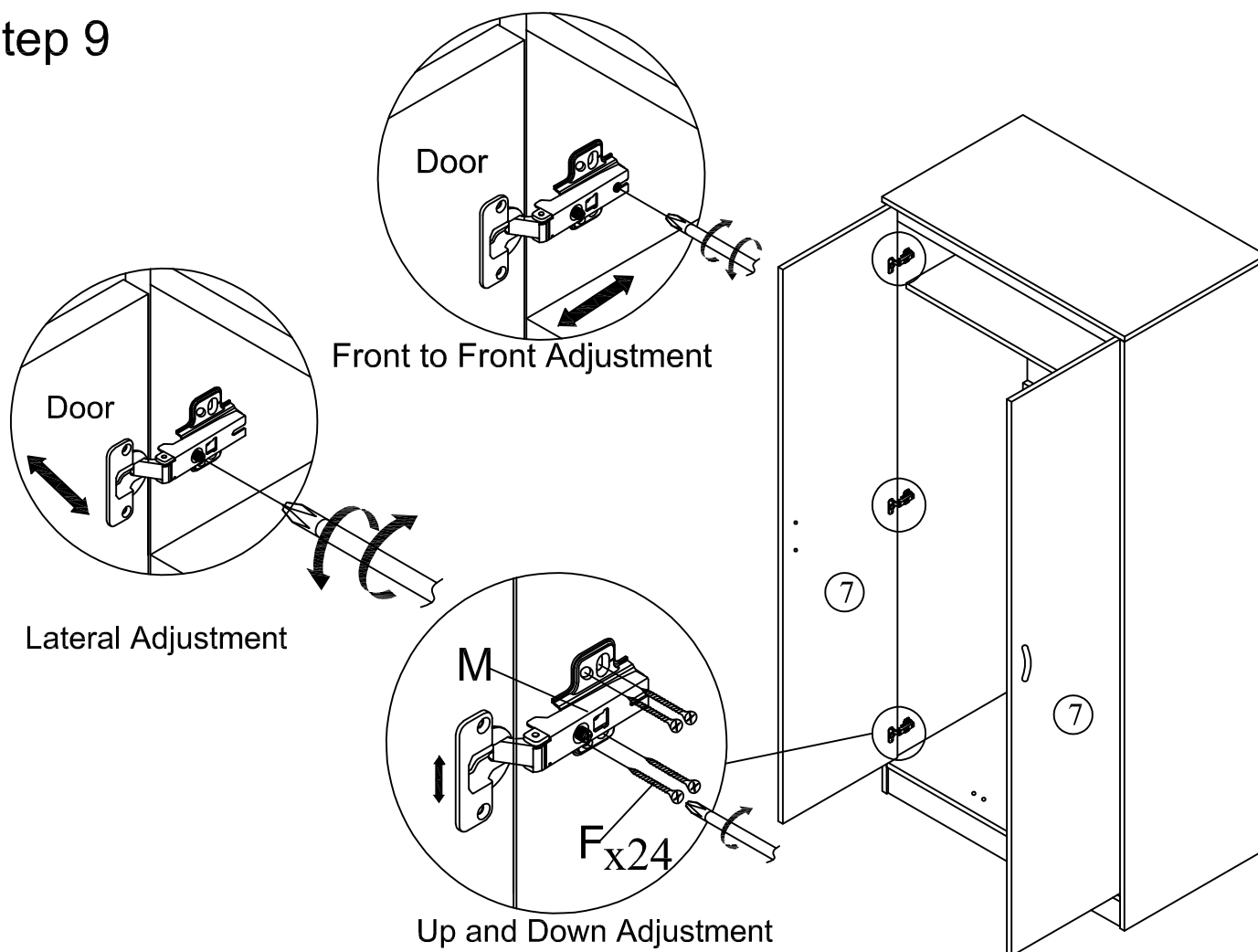
Step 7



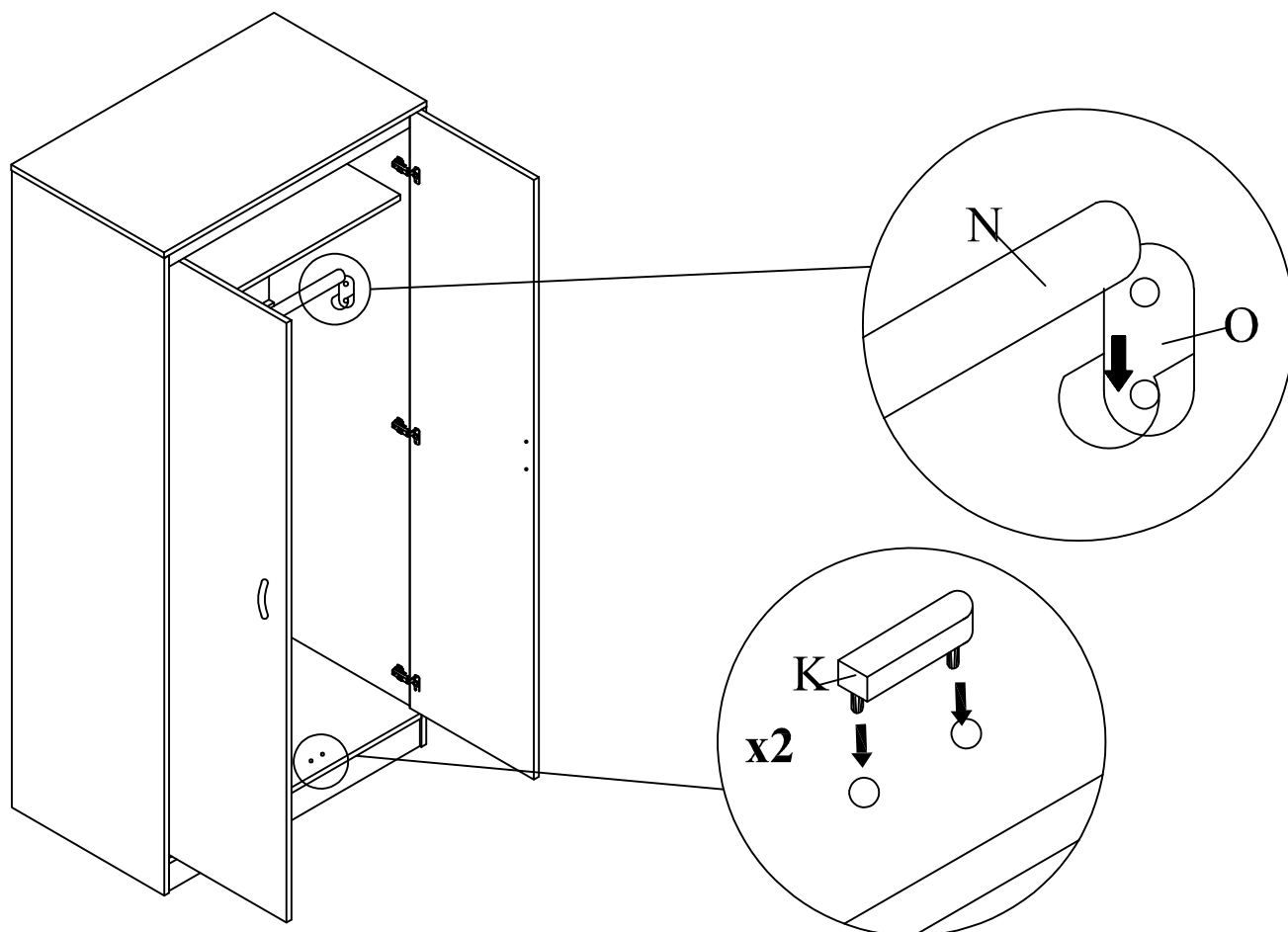
Step 8



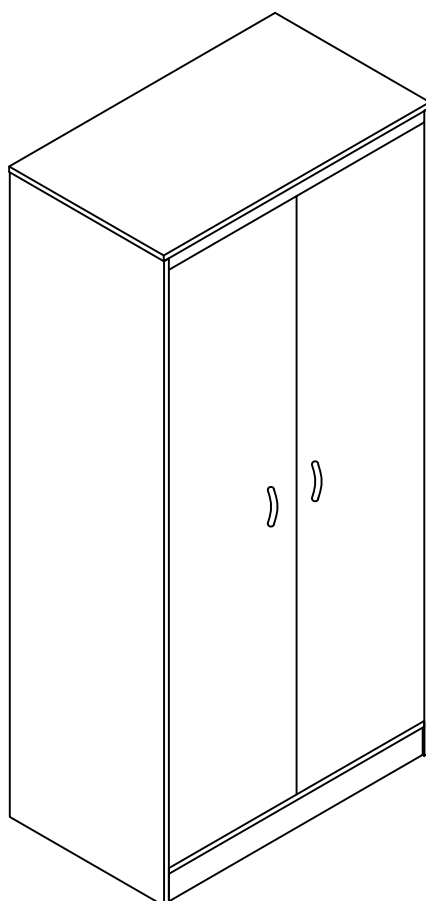
Step 9



Step 10



Step 11



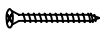
Anti -
Tipping

(A)



CSK Screw
M3.5x16mm
1PC

(B)



CSK Screw
M4x50mm
1PC

(C)

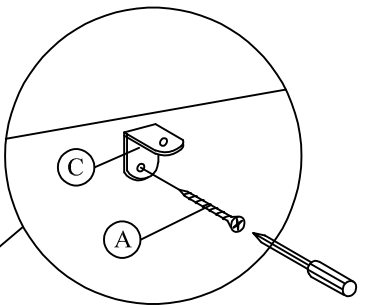
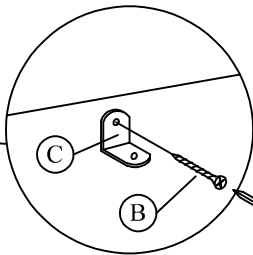
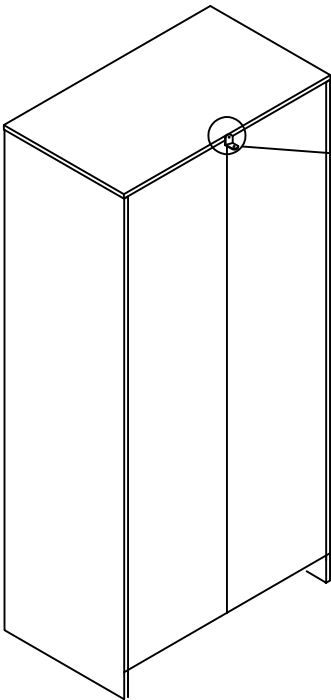
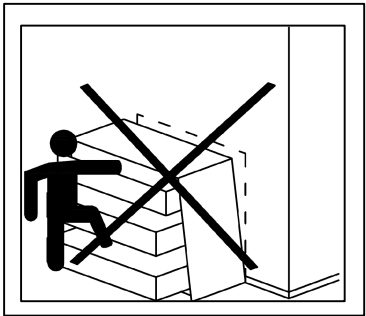
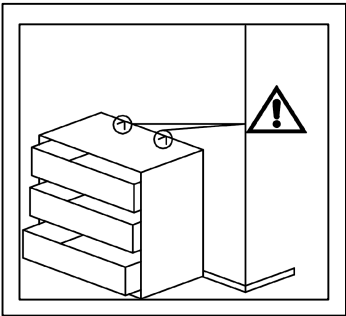


L BRACKET
2PCS

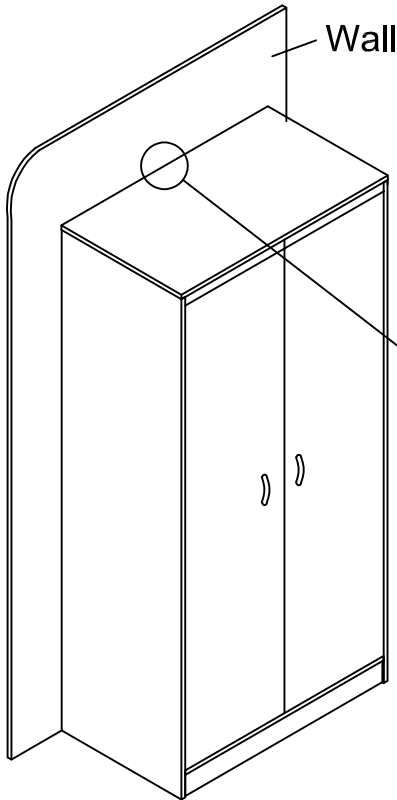
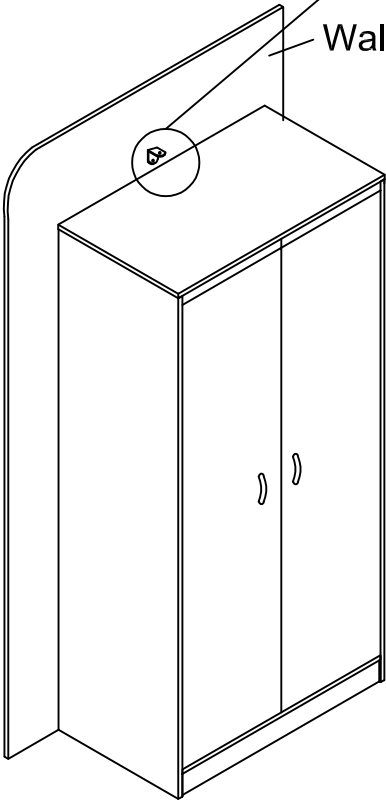
(D)



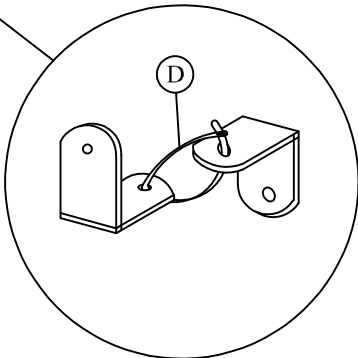
CABLE TIE
1PC



Wall



Wall



RETURN / DAMAGE CLAIM INSTRUCTIONS

1. **DO NOT** discard of the box / original packaging.

In case a return is required, the item must be returned in original box. Without this your return will not be accepted.

2. Take a photo of the box markings.

A photo of the markings (text) on the box is required in case a part is needed for replacement. This helps our staff identify your product number to ensure you receive the correct parts.

3. Take a photo / Video of Damage (if applicable).

A photo /Video of the damage is always required to file a claim and get your replacement or refund processed quickly. Please make sure you have the box even if it is damaged.

4. Send us an email with the images requested.

Email us directly with the attached images, order number (SOXXXX) and a description of your claim.

Auckland / Waikato / BOP Branch:	sales@tsbliving.co.nz
Christchurch Branch:	customersupport@tsbliving.co.nz
Wellington Branch:	wellington@tsbliving.co.nz