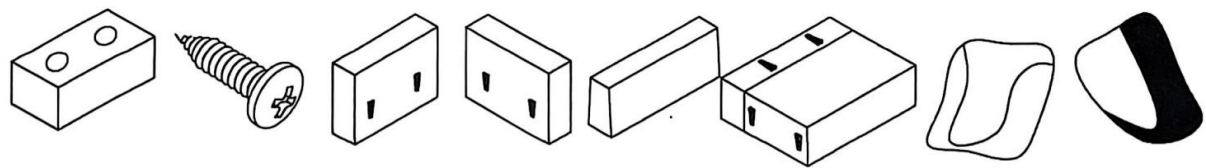
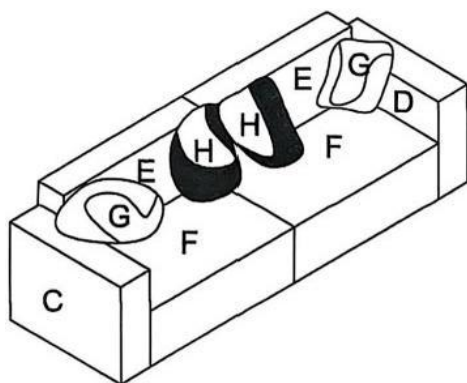


PART LIST

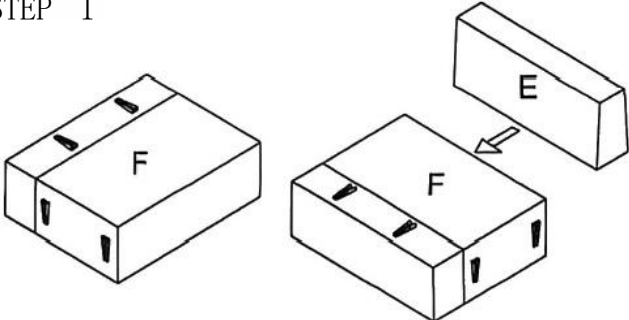


A\*8      B\*16      C\*1      D\*1      E\*2      F\*2      G\*2      H\*2

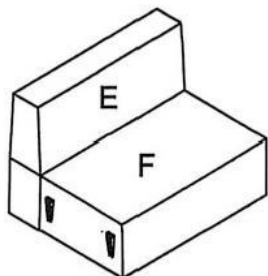
ASSEMBLE FOLLOW BELOW STEPS



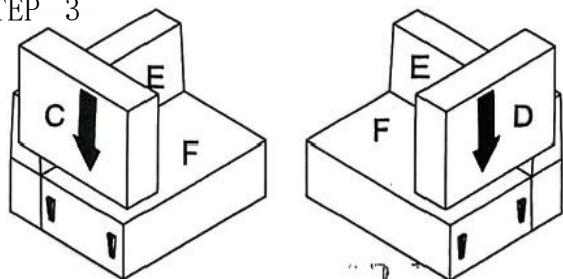
STEP 1



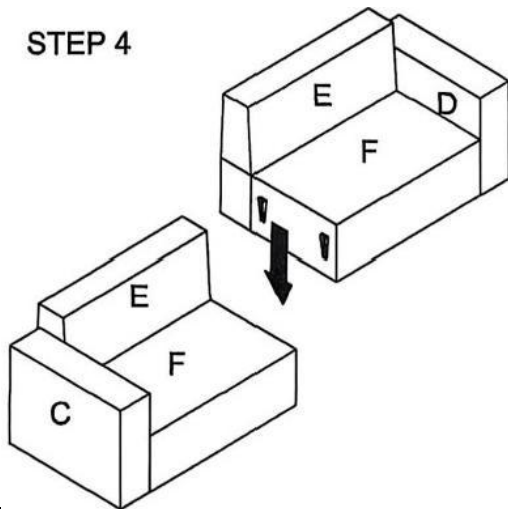
STEP 2



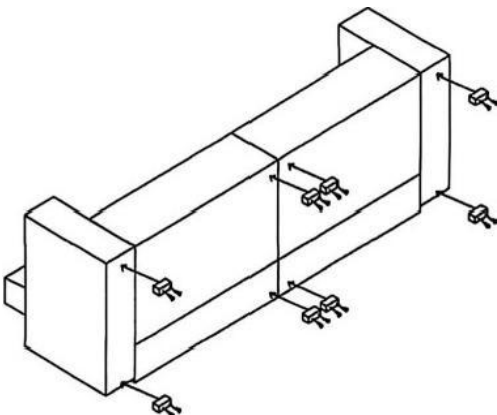
STEP 3



STEP 4



STEP 5



## **Instructions**

**1:Please check the sofa body,armrest, back rest,back rest,plastic legs and ScrewS.**

**2:The box body and the handrail are respectively connected together by a fixing insert piece.**

**3:the box body and the movable backrest are respectively connected together through the fixed insert**

**4:Connect the left and right half of the sofa.**

**5:Install the plastic foot of the sofa in the calibration position.**