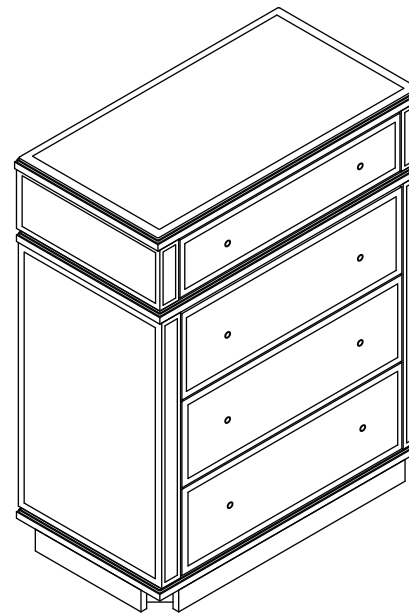


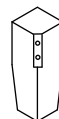
Assembly Instructions



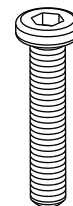
A *1



B *4



C *8



D *8



E*8



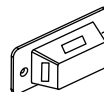
F*8



G *1



H *2



I*2



J*2



K *2



L *4



M *1



WARNING

Children have died from furniture tipover. To reduce the risk of furniture tipover:

- ALWAYS install tipover restraint provided.
- NEVER put a TV on this product.
- NEVER allow children to stand, climb or hang on drawers, doors, or shelves.
- NEVER open more than one drawer at a time.
- Place heaviest items in the lowest drawers.
- Do not defeat or remove the drawer interlock system.

This is a permanent label.

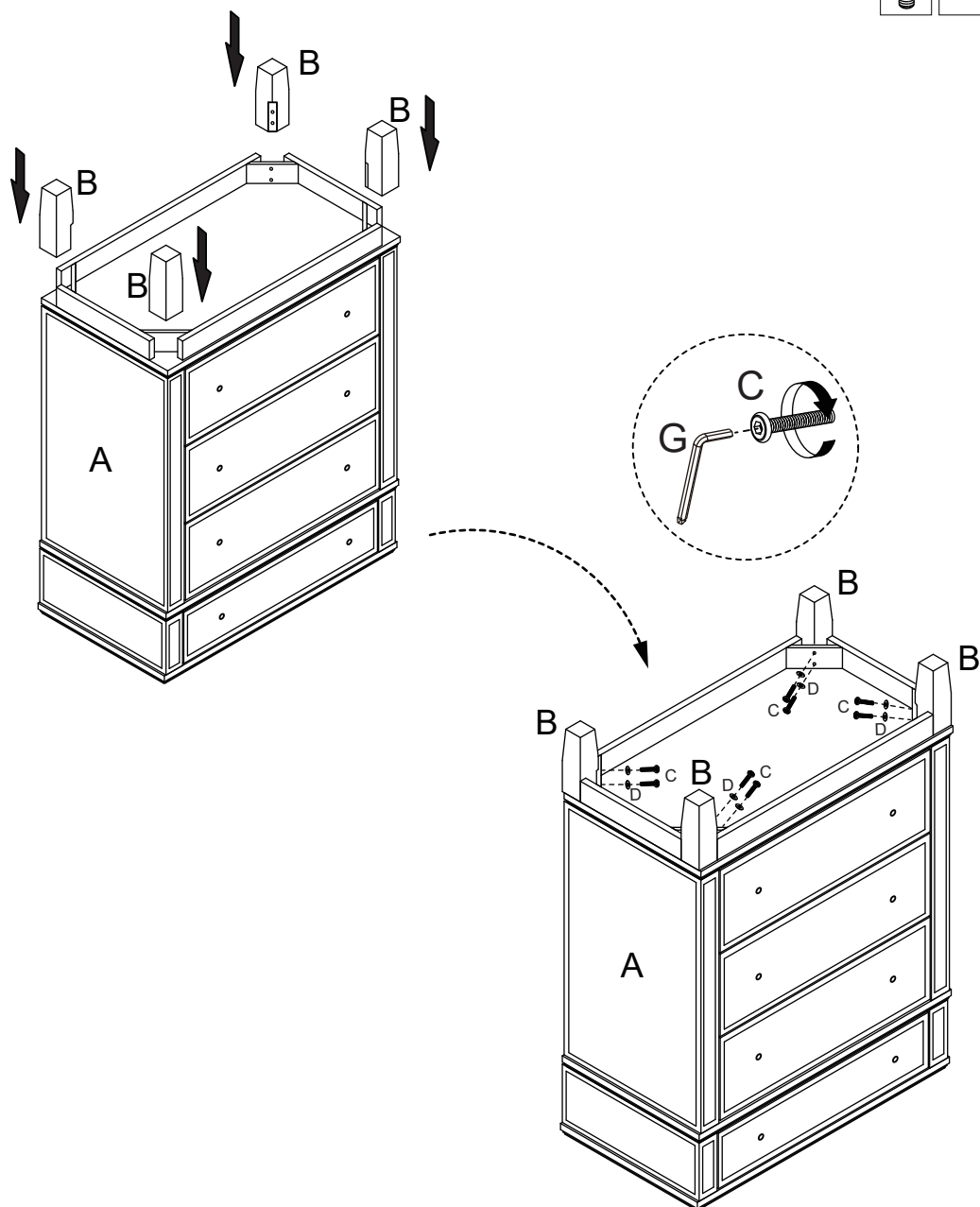
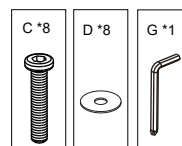
Do not remove!



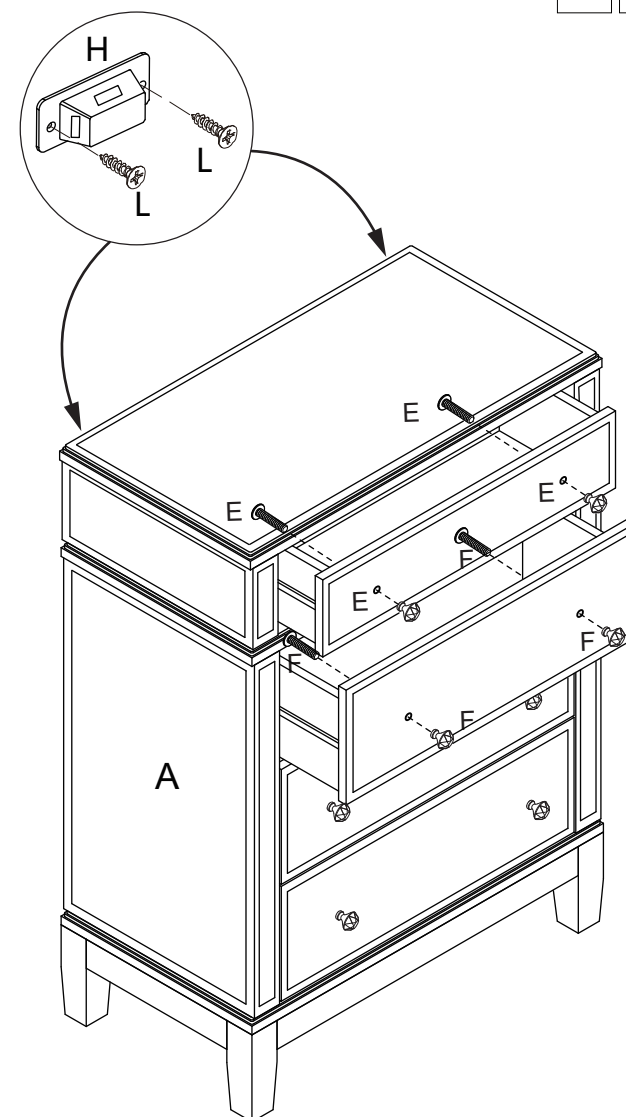
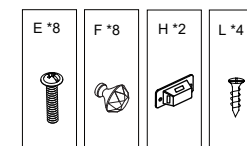
1



Attention: Face down the cabinet on the soft carpet



2



3

