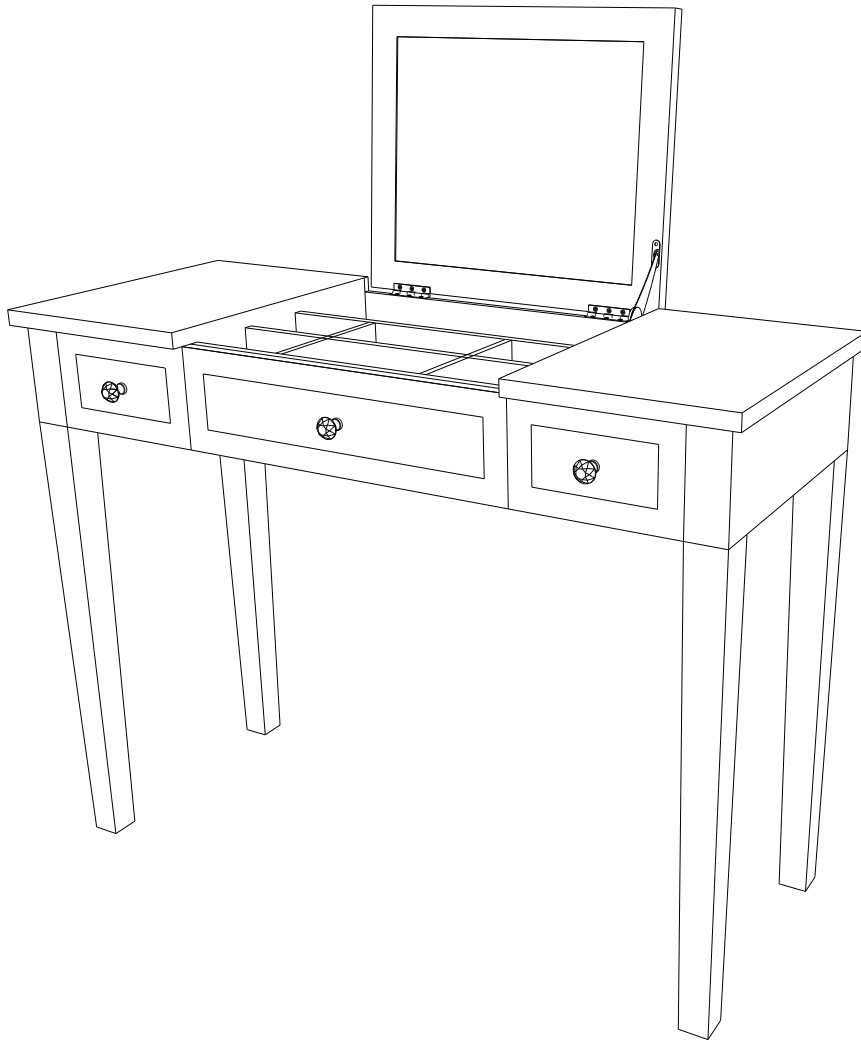


# Assembly Instructions



## WARNING



Children have died from furniture tipover. To reduce the risk of furniture tipover:

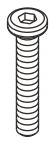
- ALWAYS install tipover restraint provided.
- NEVER put a TV on this product.
- NEVER allow children to stand, climb or hang on drawers, doors, or shelves.
- NEVER open more than one drawer at a time.
- Place heaviest items in the lowest drawers.
- Do not defeat or remove the drawer interlock system.

This is a permanent label.

Do not remove!

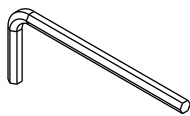
# PART LIST

A



Bolt (x8)

B



Allen wrench (x1)

C



Anchor (x1)

D



Eyelet screw (x1)

E



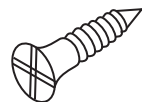
Washer (x8)

F



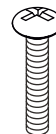
Cable tie (x1)

G



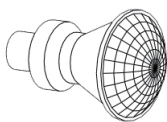
Short screw (x2)

H



Screw (x3)

I



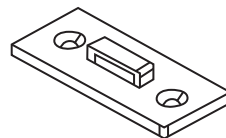
Knob (x3)

J



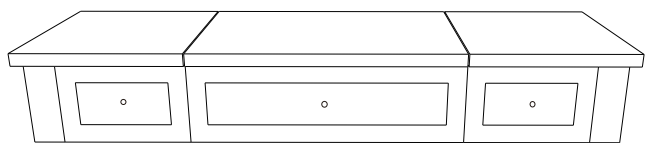
Polishing cloth (x1)

K



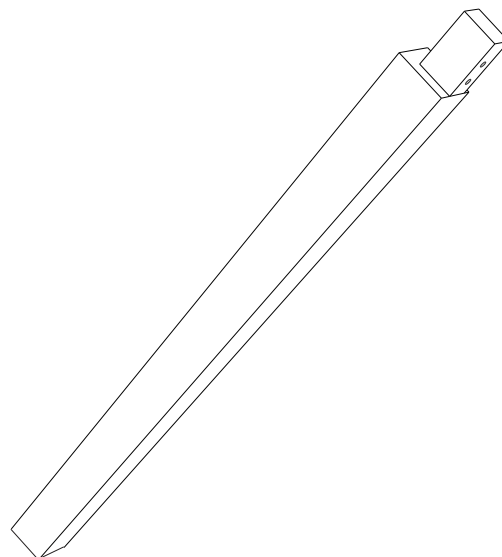
Plastic bracket (x1)

1



Mirrored cabinet (x1)

2



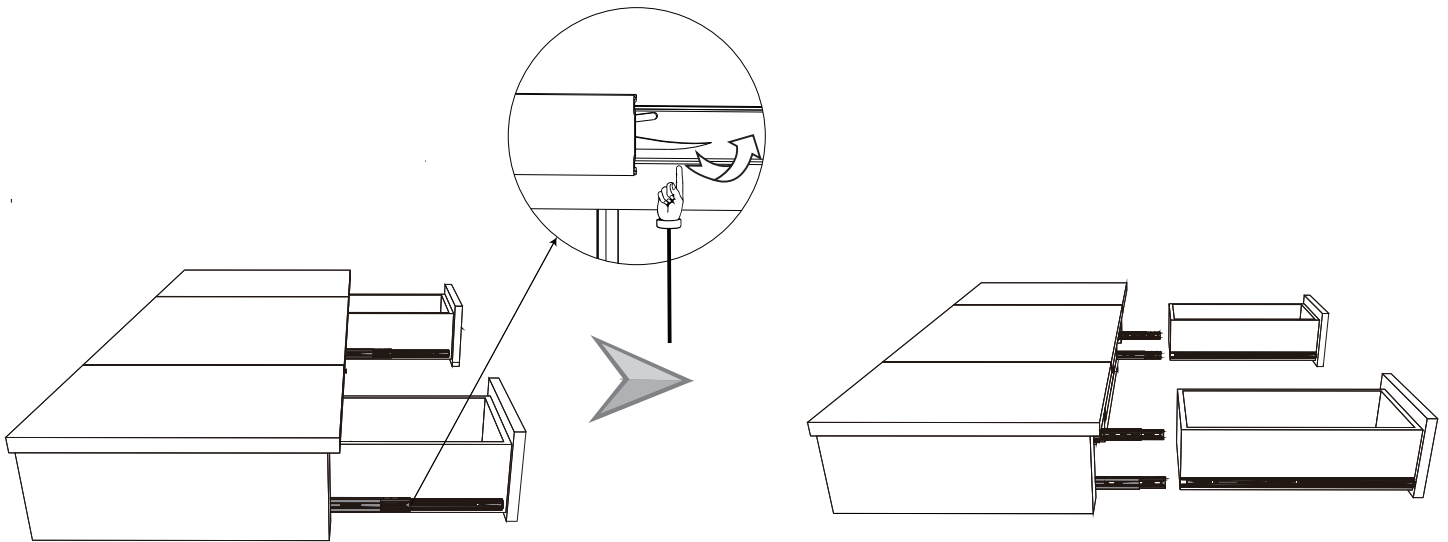
Leg (x4)

**TOOLS NEEDED FOR ASSEMBLY: DRILLER & HANDHELD SCREWDRIVER (NOT INCLUDED)  
THE USE OF POWER SCREWDRIVER IS NOT RECOMMENDED**

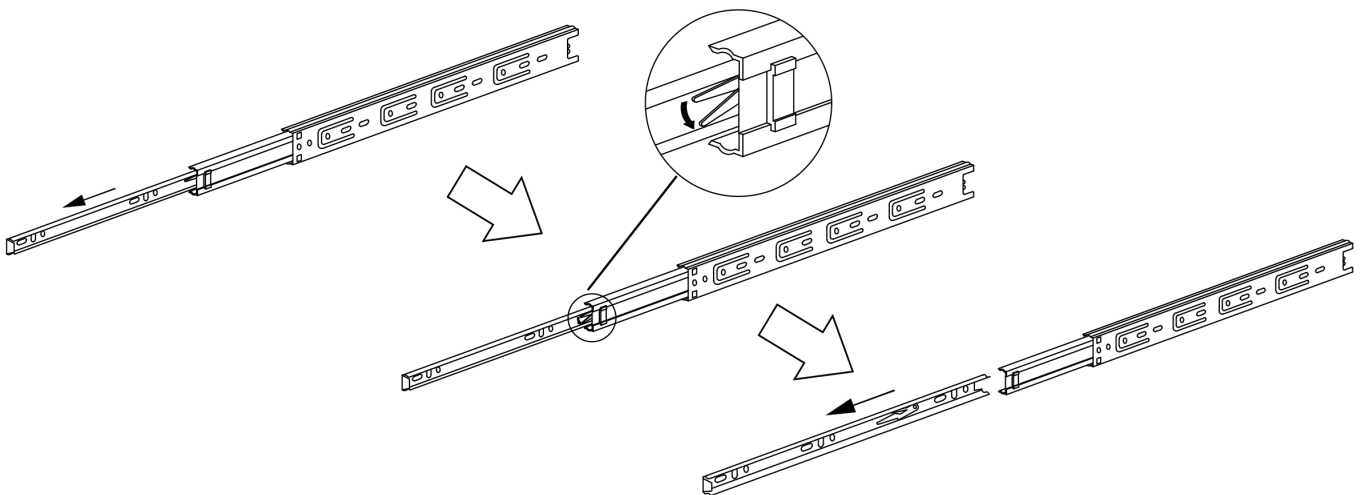
# ASSEMBLY STEPS

## STEP1

1. Remove the drawer first, pull the drawer out to the end, you will find long black buckles on the left and right sides of the drawer as shown.
2. Press the left side of the exposed buckle upwards, and the right side downwards, the drawer can be pulled out.



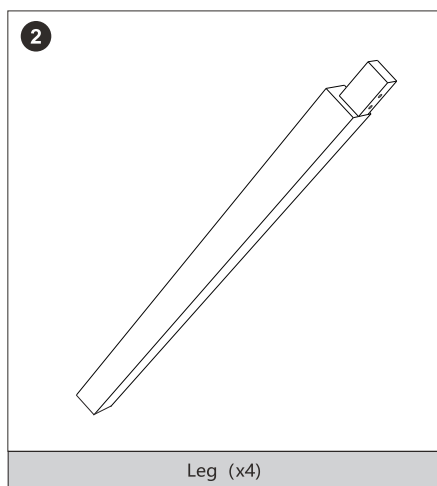
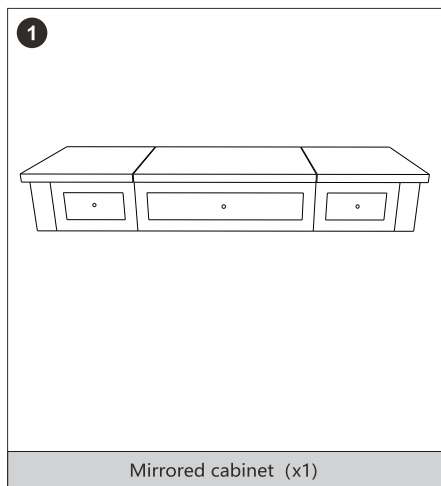
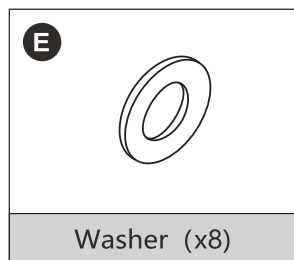
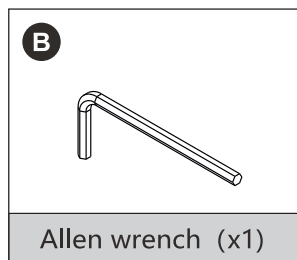
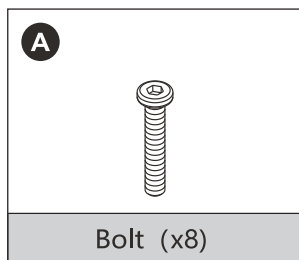
### Hardware disassembly example



\*Assemble unit on carpet or soft surface\*

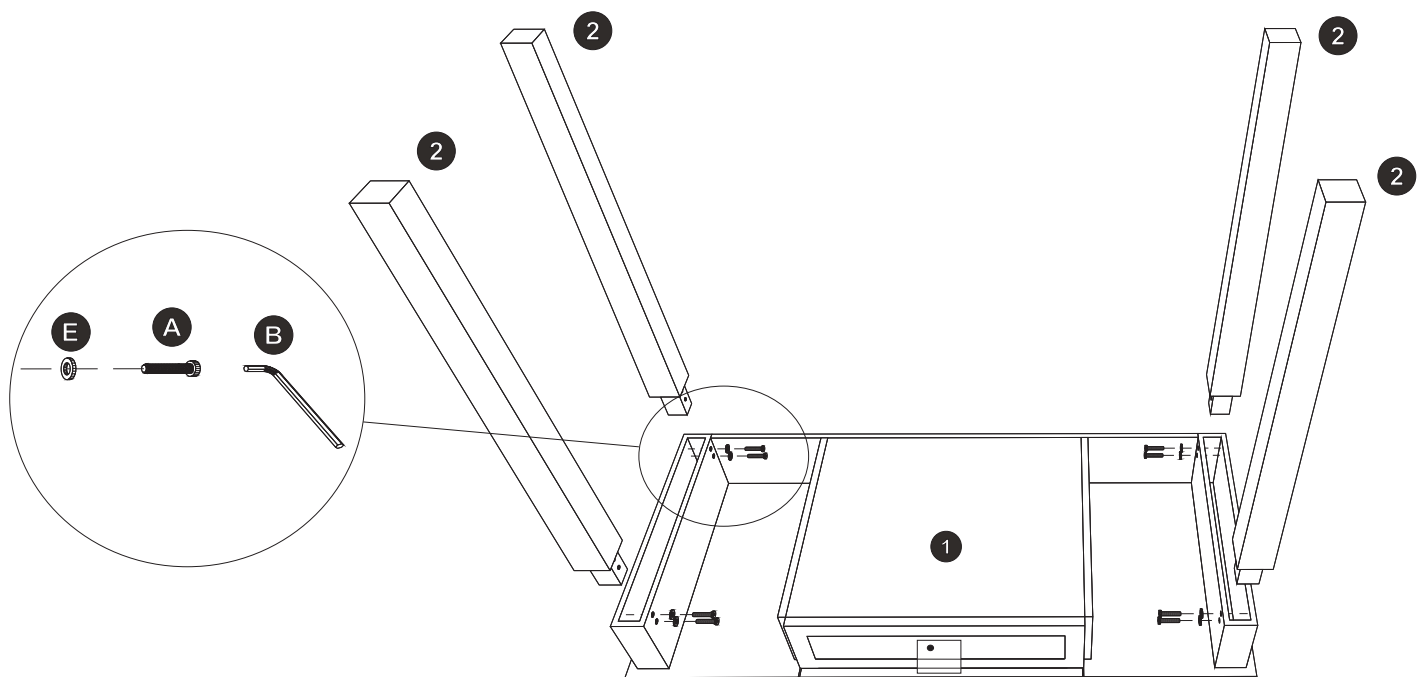
# ASSEMBLY STEPS

New panels & accessories needed in below step



## STEP2

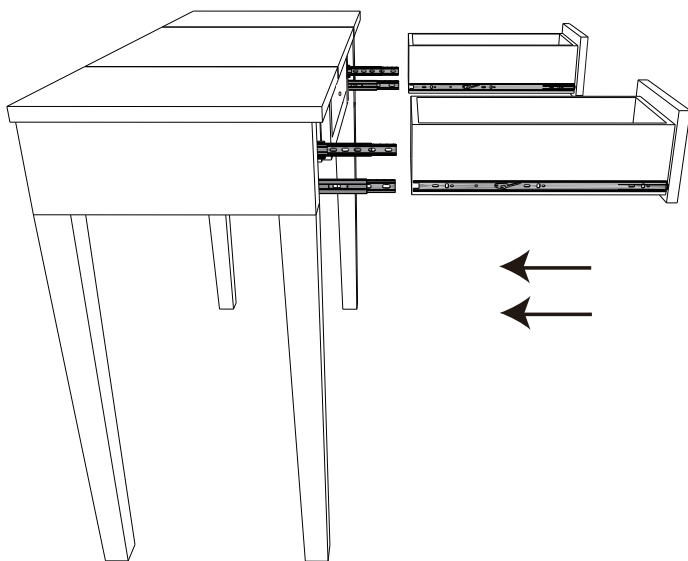
1. Slightly lay the mirrored cabinet(1) face down on carpet or soft surface to avoid scratches on the item.
2. Insert legs(2) into four corners of mirrored cabinet(1) then fasten legs(2) to mirrored cabinet by using bolts (A) , washers (E) and allen wrench (B) as shown below.



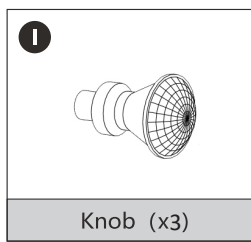
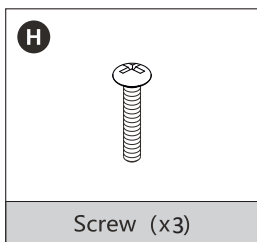
# ASSEMBLY STEPS

## STEP 3

Install the drawer back along the slide rails, as shown.

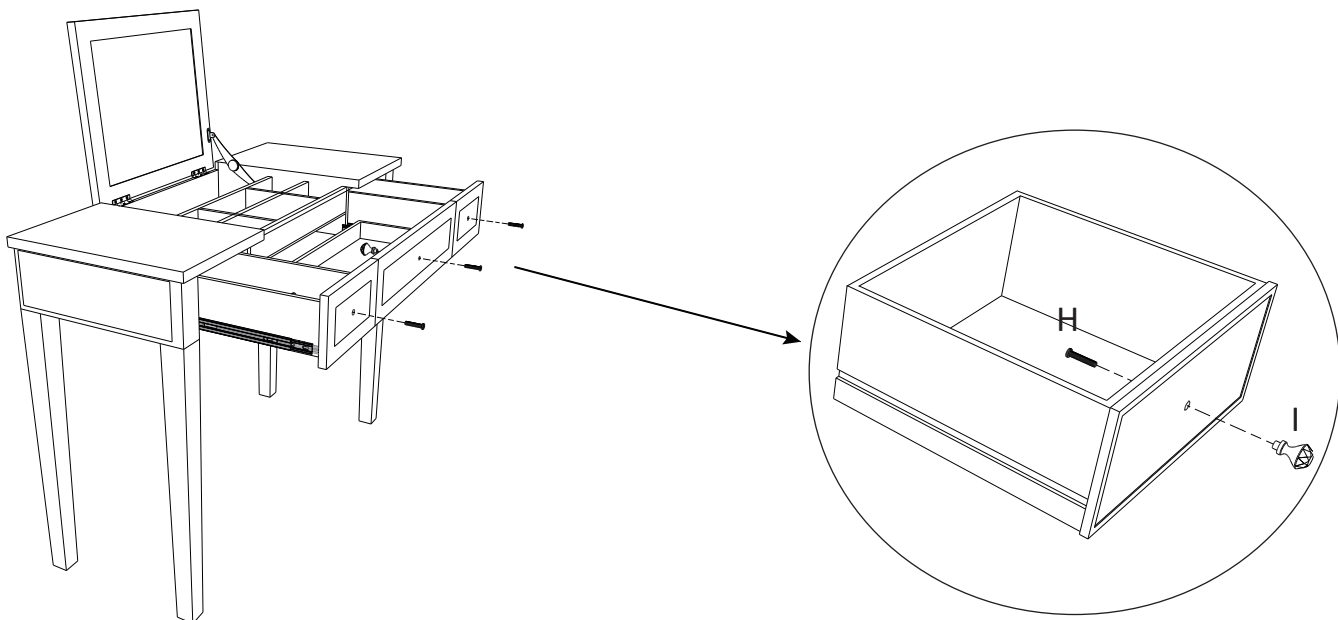


New panels & accessories needed in below step



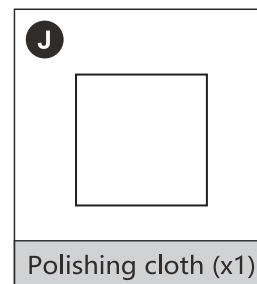
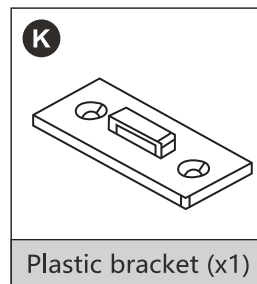
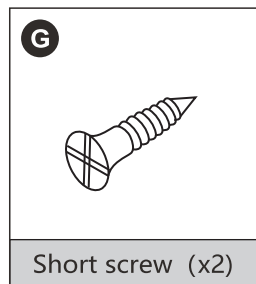
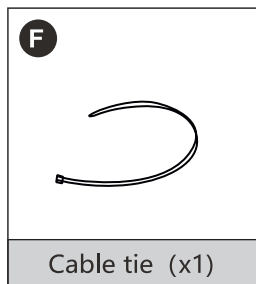
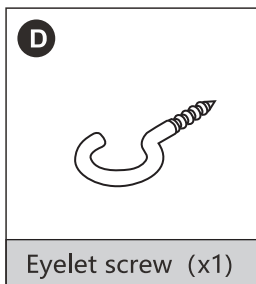
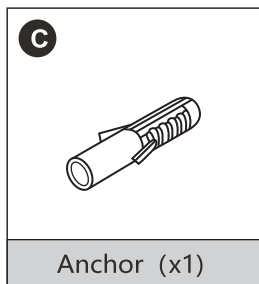
## STEP 4

1. Rotate out knob (I) inside of drawer and remove the screw (H) by using a handheld screwdriver.
2. Reversely install screw (H) into drawer front board then thread the knob back onto drawer (\*Note: do not screw the knobs on too tightly).



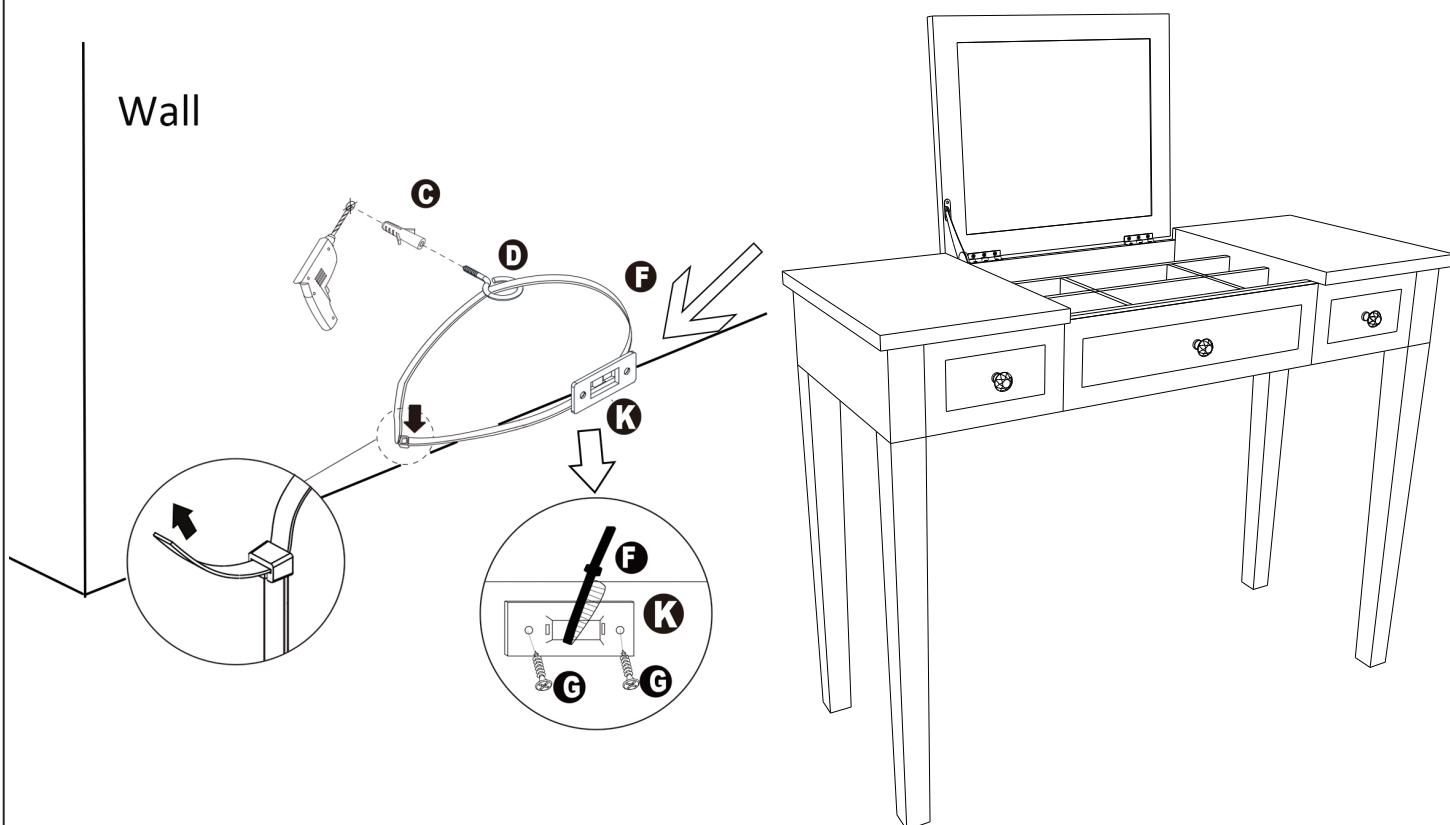
# ASSEMBLY STEPS

New panels & accessories needed in below step



## STEP5

1. Connect plastic bracket (K) to unit by using short screw (G) as shown below.
2. Insert cable tie (F) into plastic bracket (K) as shown below.
3. Drill a hole slightly smaller than anchor (C) into drywall and gently tap anchor into hole.
4. Insert eyelet screw (D) into anchor and fasten unit to wall with cable tie (F).
5. Use polishing cloth (J) to clean the mirror.



# MAXIMUM LOAD

This unit is designed to support the maximum load as shown. Exceeding this load limit could cause sagging instability, collapse and serious injury.

**Load-bearing: 33lbs / 15kg**

