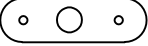




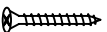
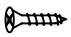



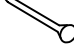

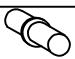


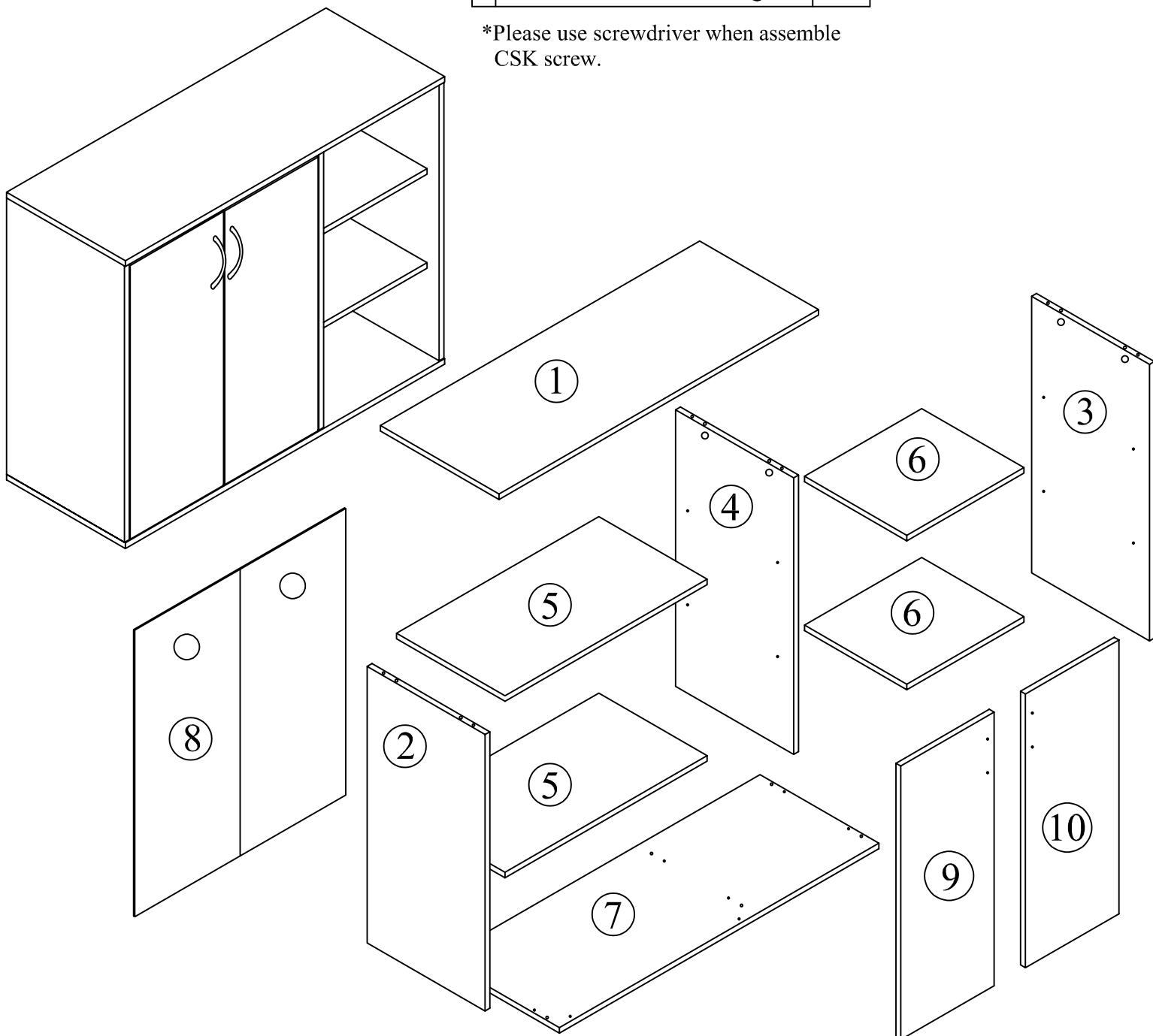
# Assembly Instructions

Model: SC 8002-B

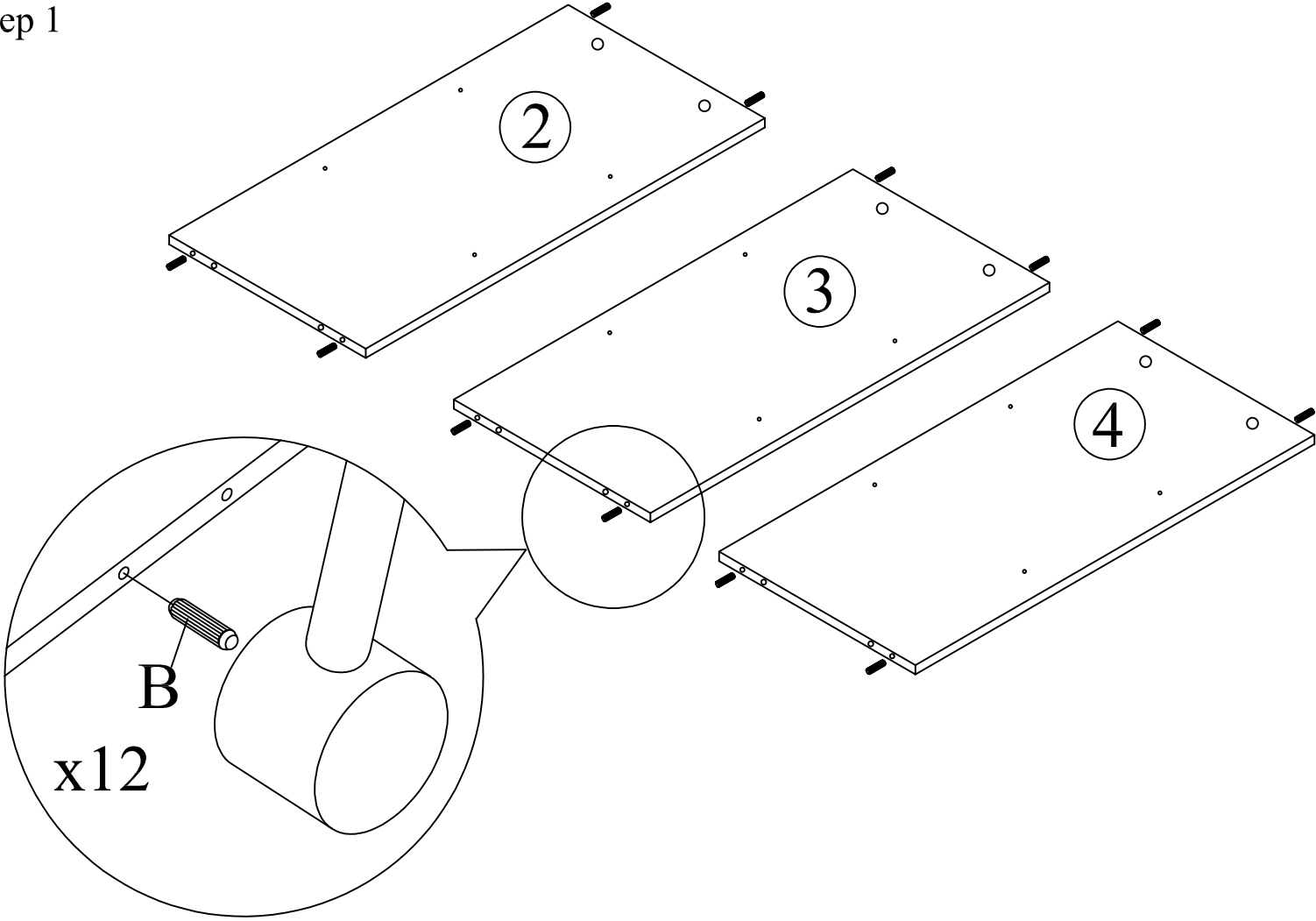
Part List		QTY
1	Top Panel	1
2	Left Side Panel	1
3	Right Side Panel	1
4	Middle Panel	1
5	Big Shelf Panel	2
6	Small Shelf Panel	2
7	Bottom Panel	1
8	Back Panel	1
9	Left Door Panel	1
10	Right Door Panel	1

Hardware		QTY
A	Magnet Plate 	2
B	Dowel 	12
C	Mini Fix Bolt 	6
D	Mini Fix Housing 	6
E	Door Support 	4
F	CSK Screw M4x50mm 	6
G	CSK Screw M3.5x12mm 	10
H	Handle 	2
I	Door Magnet 	2
J	White Nail 	4
K	Nail 	22
L	Handle Screw 	4
M	Shelf Support 	16

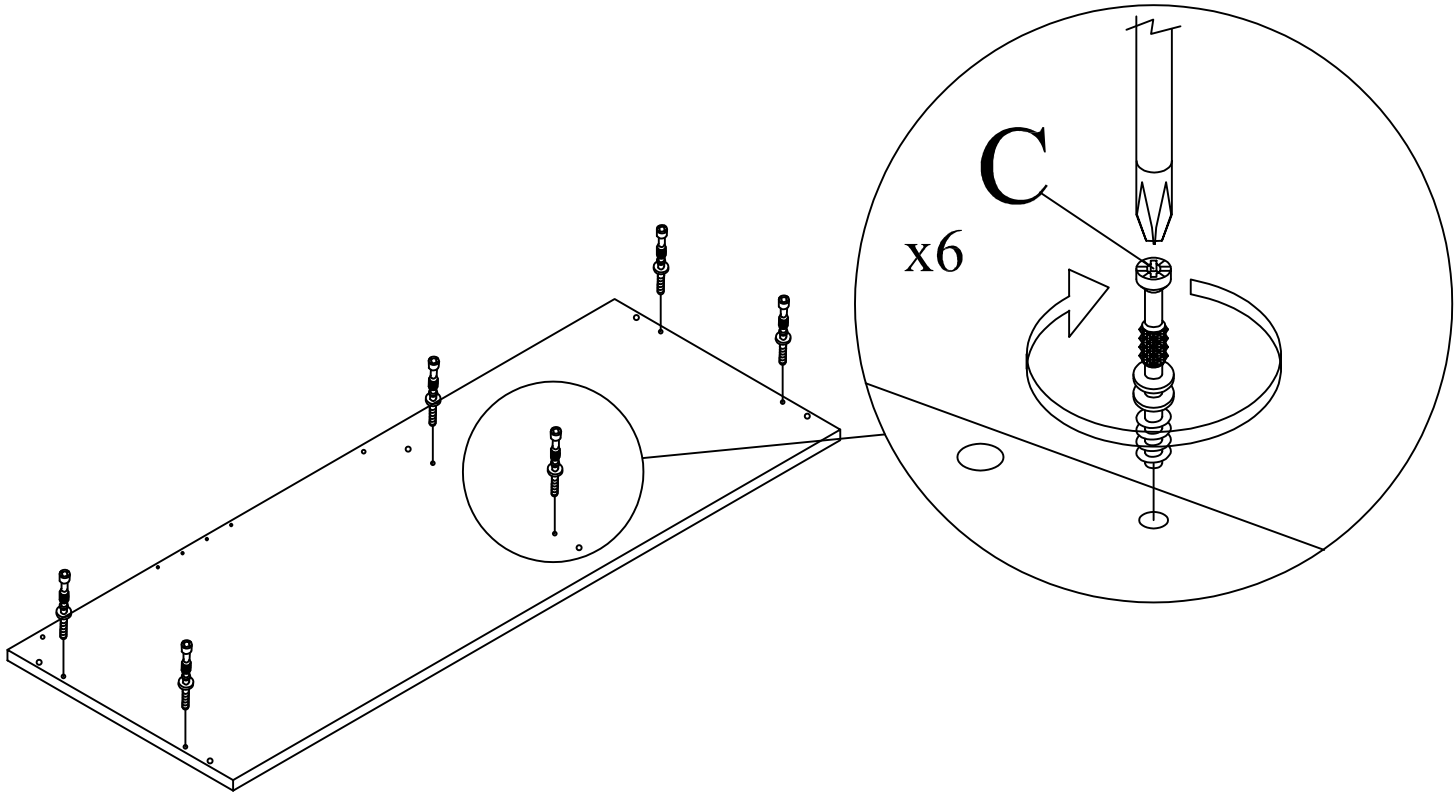
\*Please use screwdriver when assemble CSK screw.



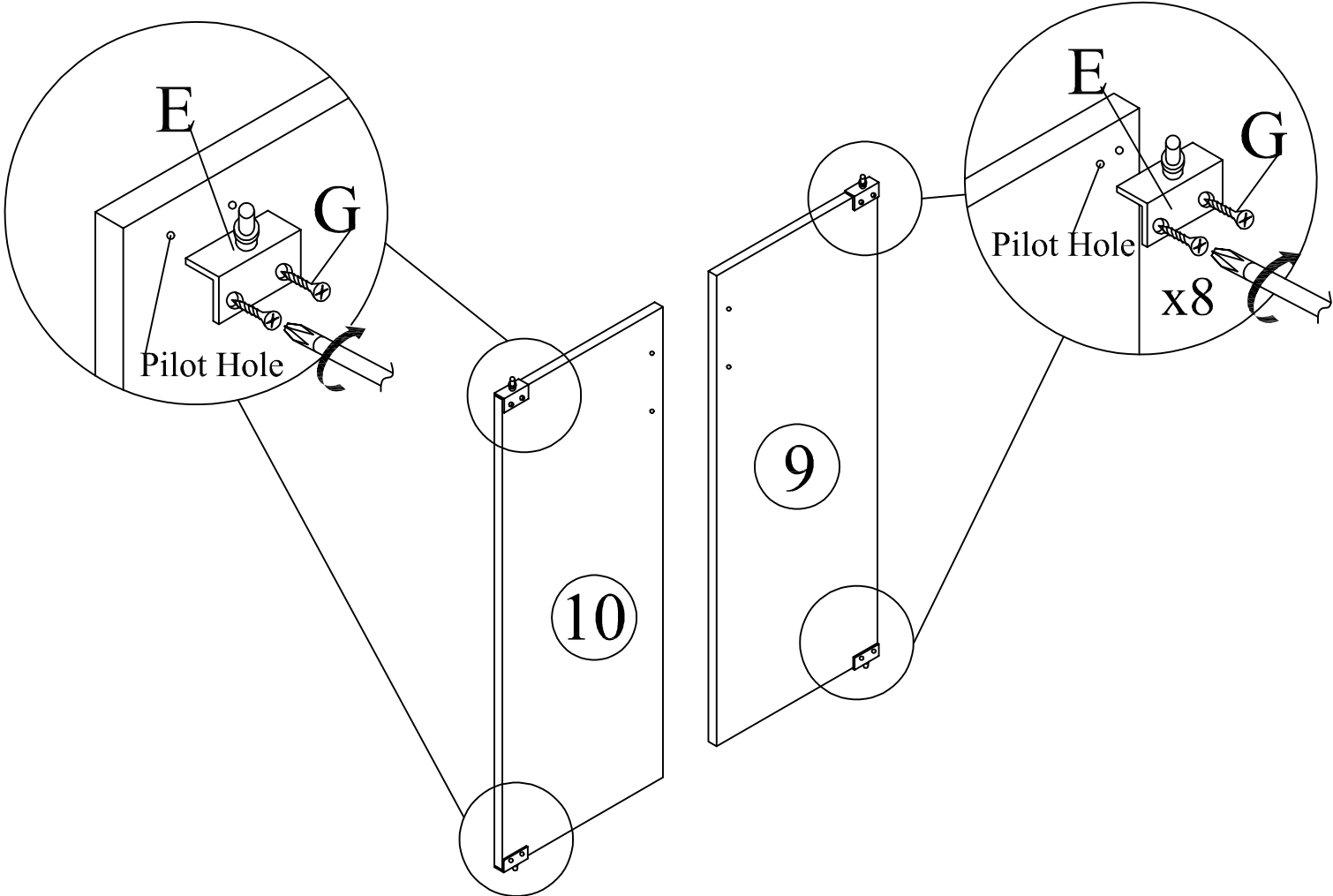
Step 1



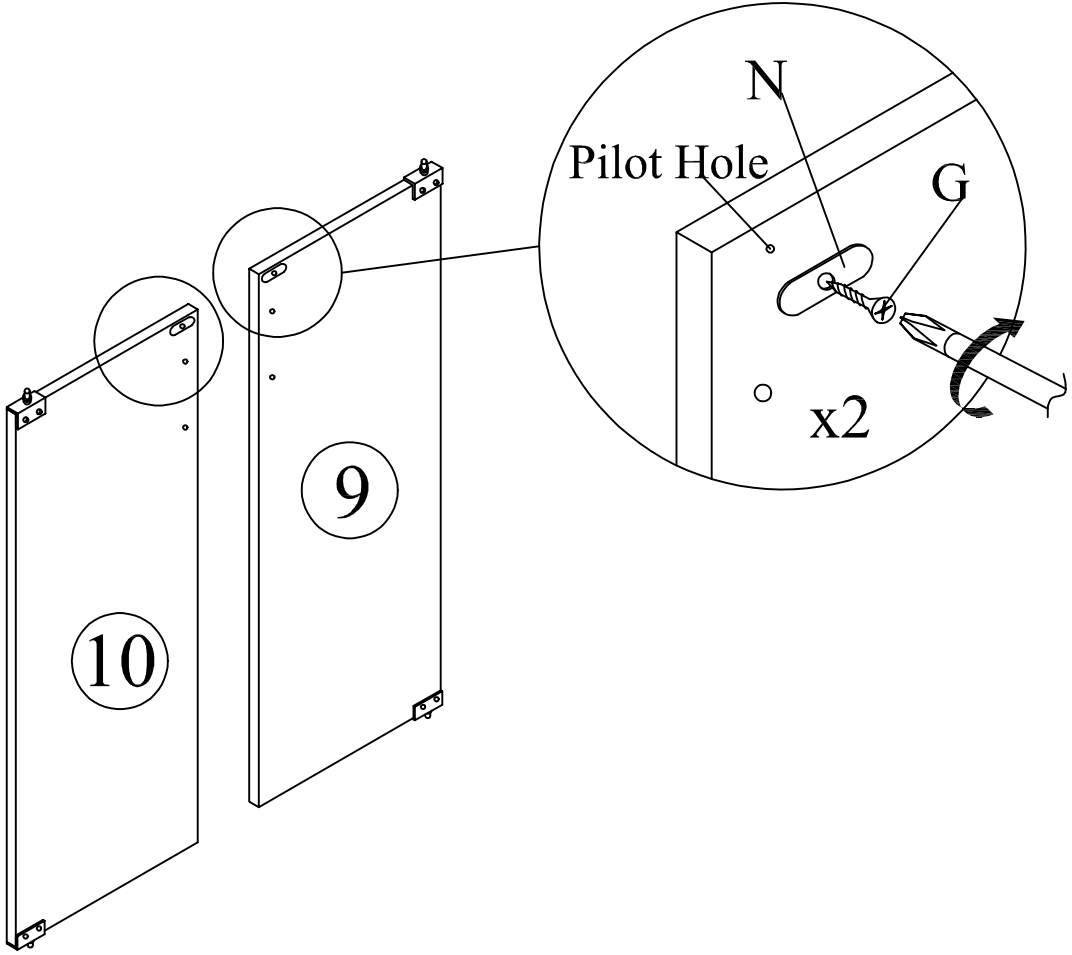
Step 2



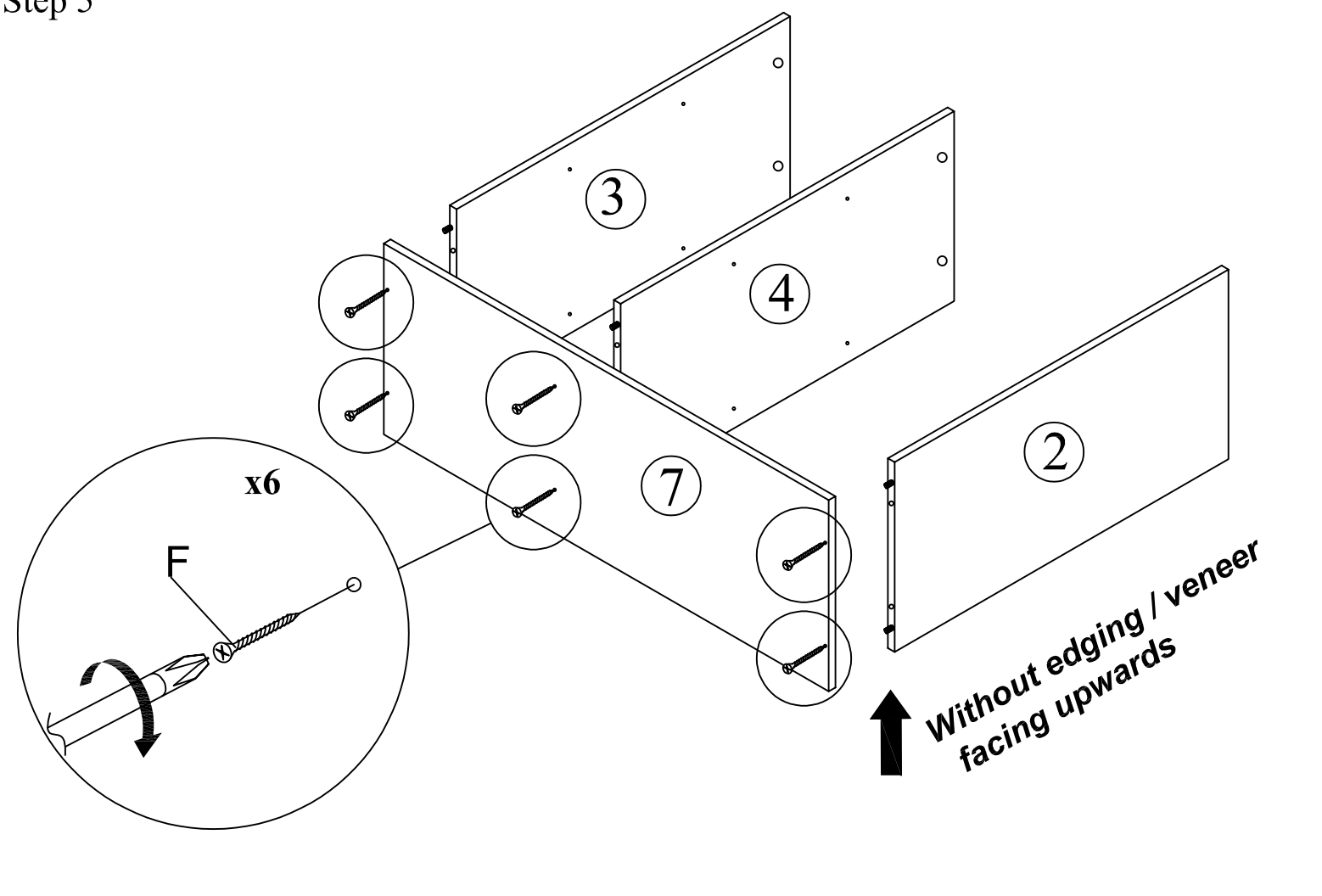
Step 3



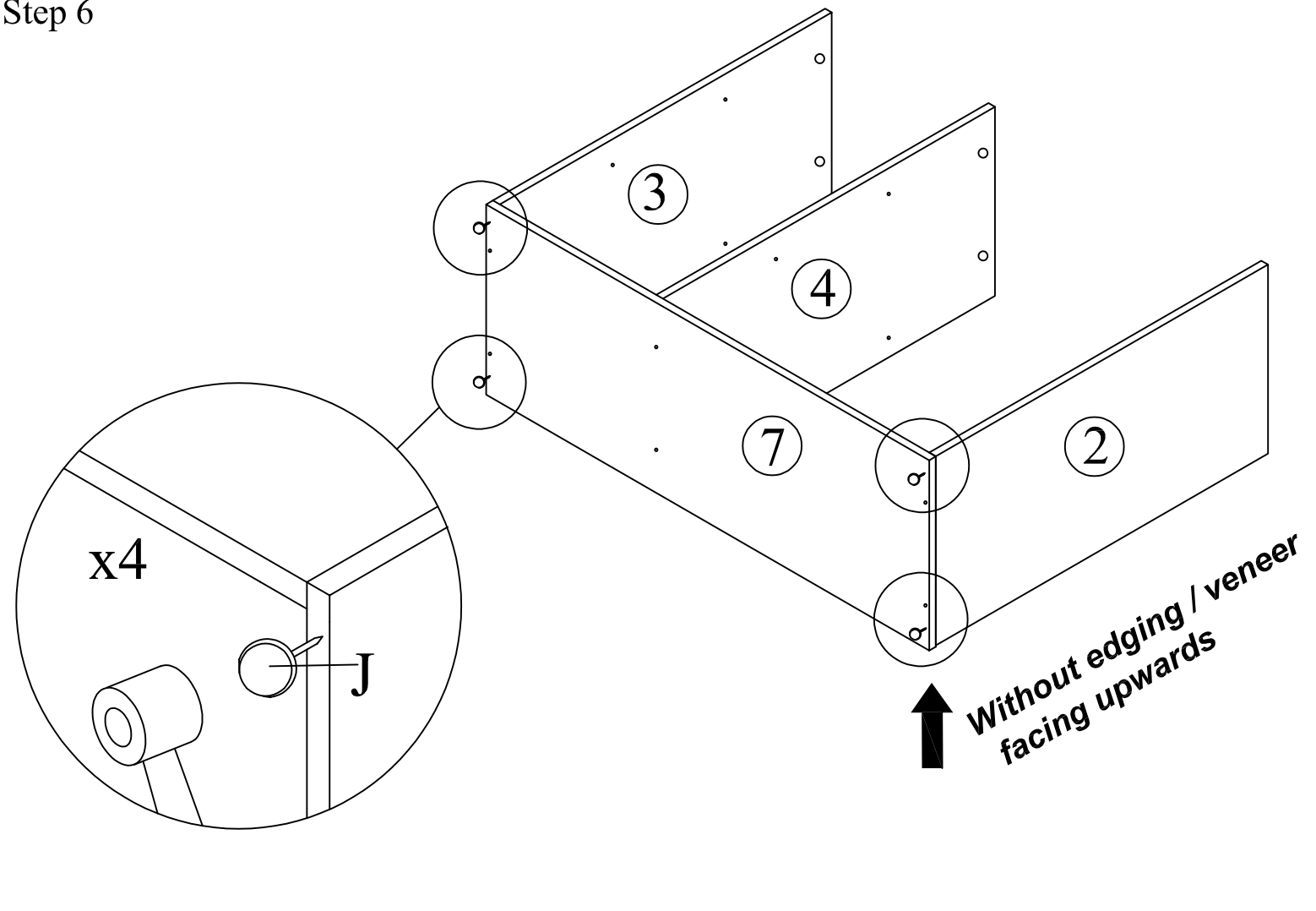
Step 4



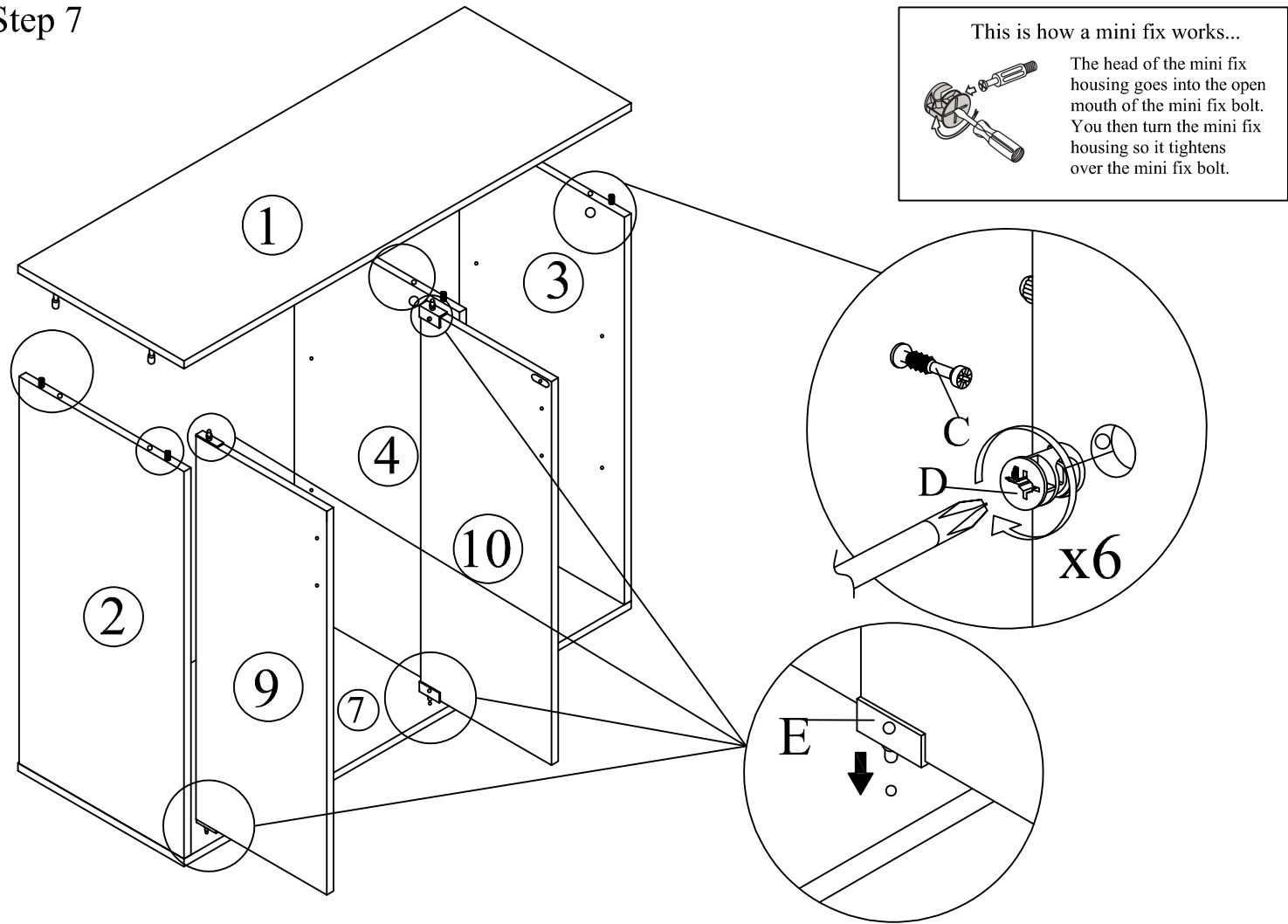
Step 5



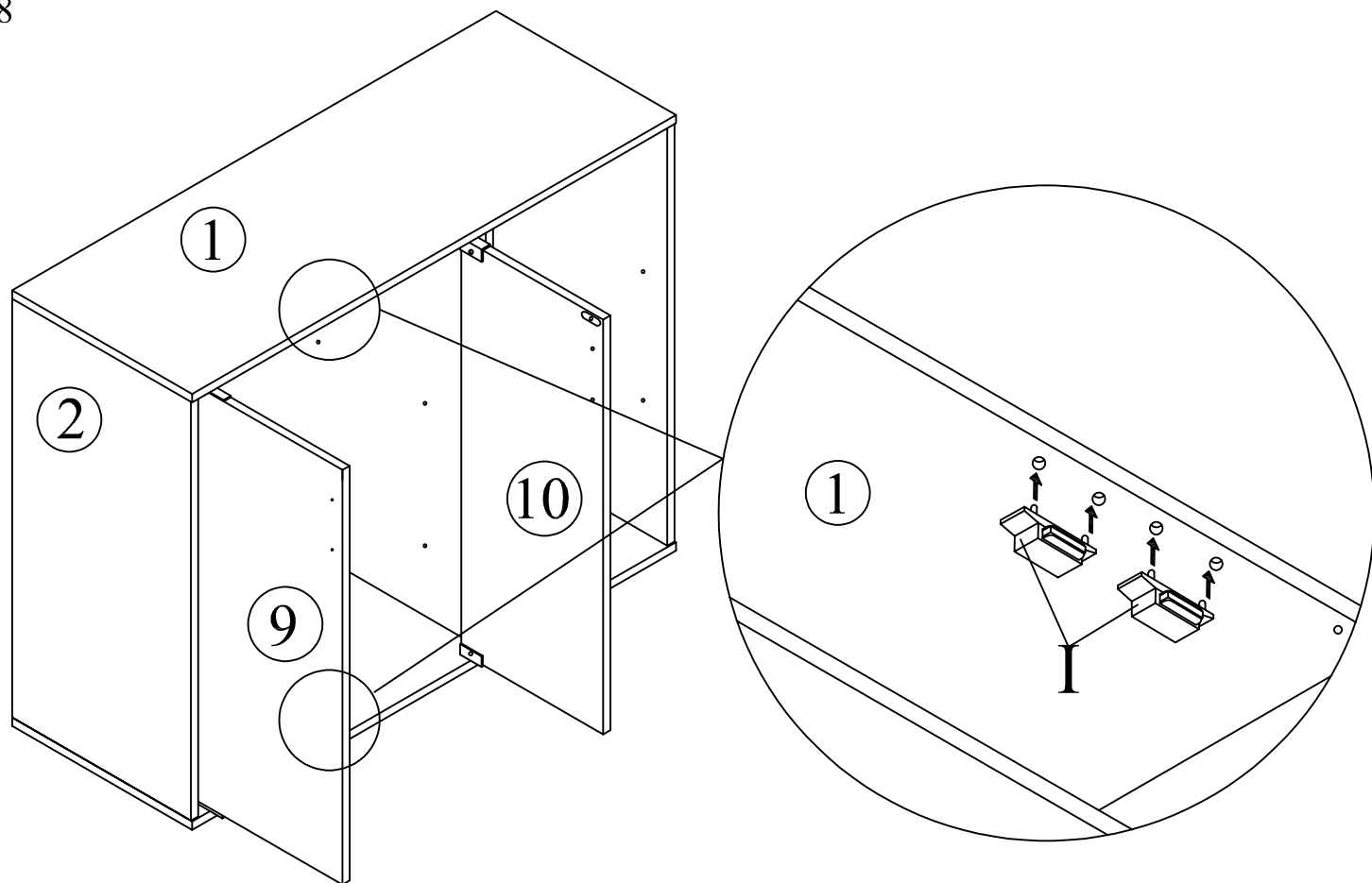
Step 6



Step 7

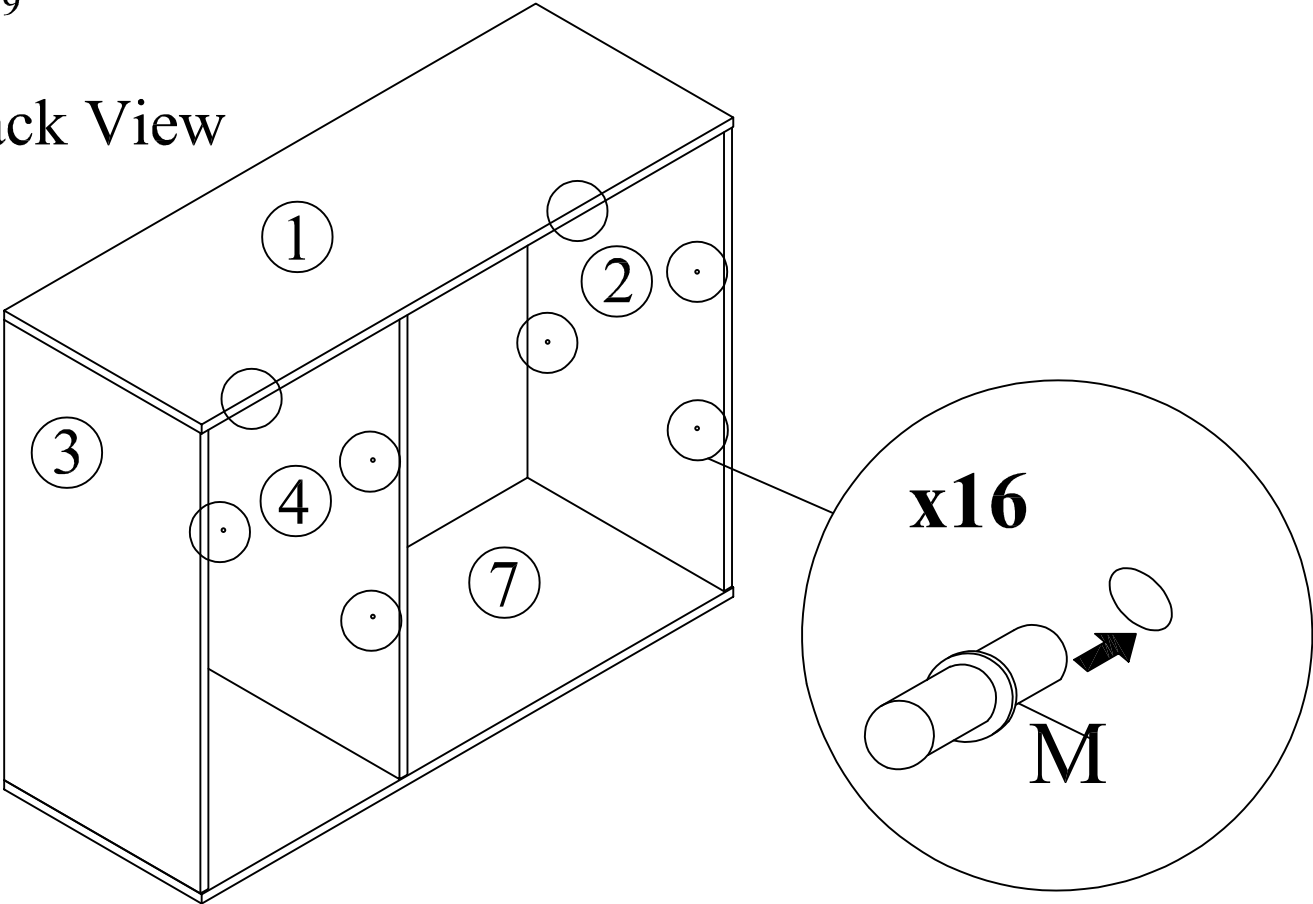


Step 8



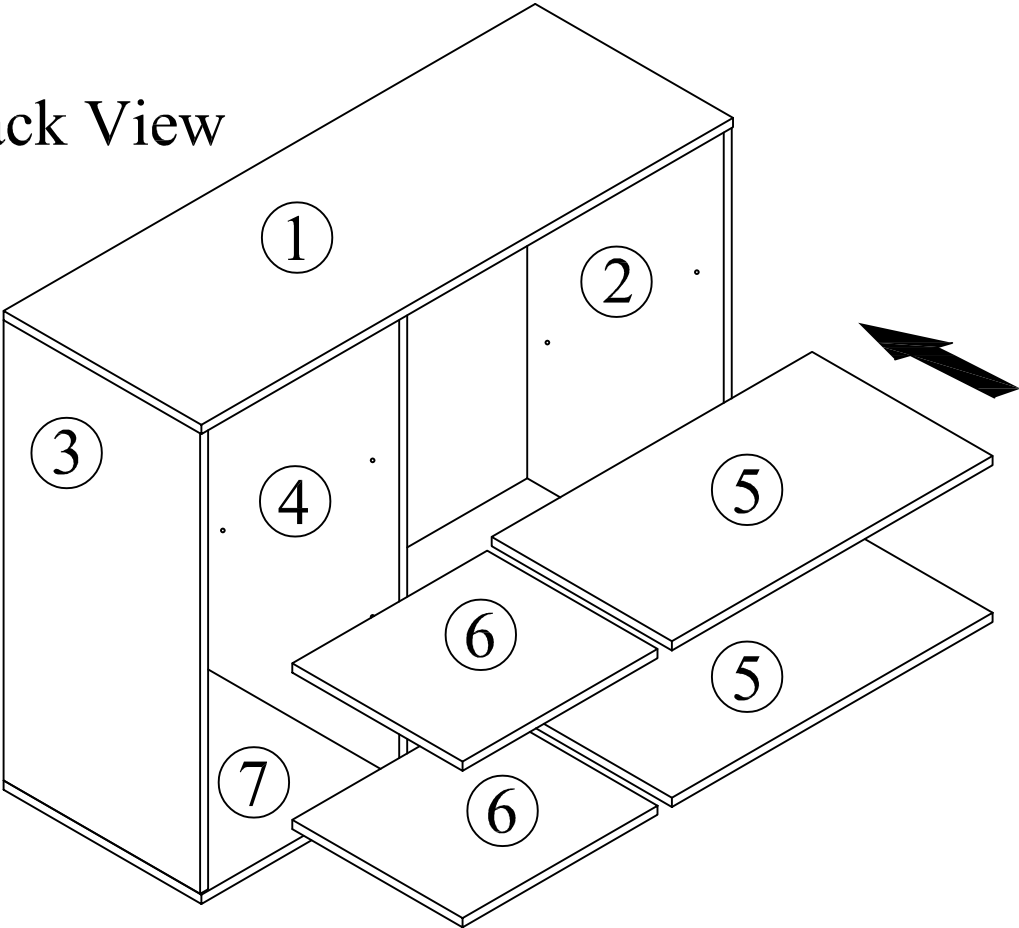
Step 9

Back View



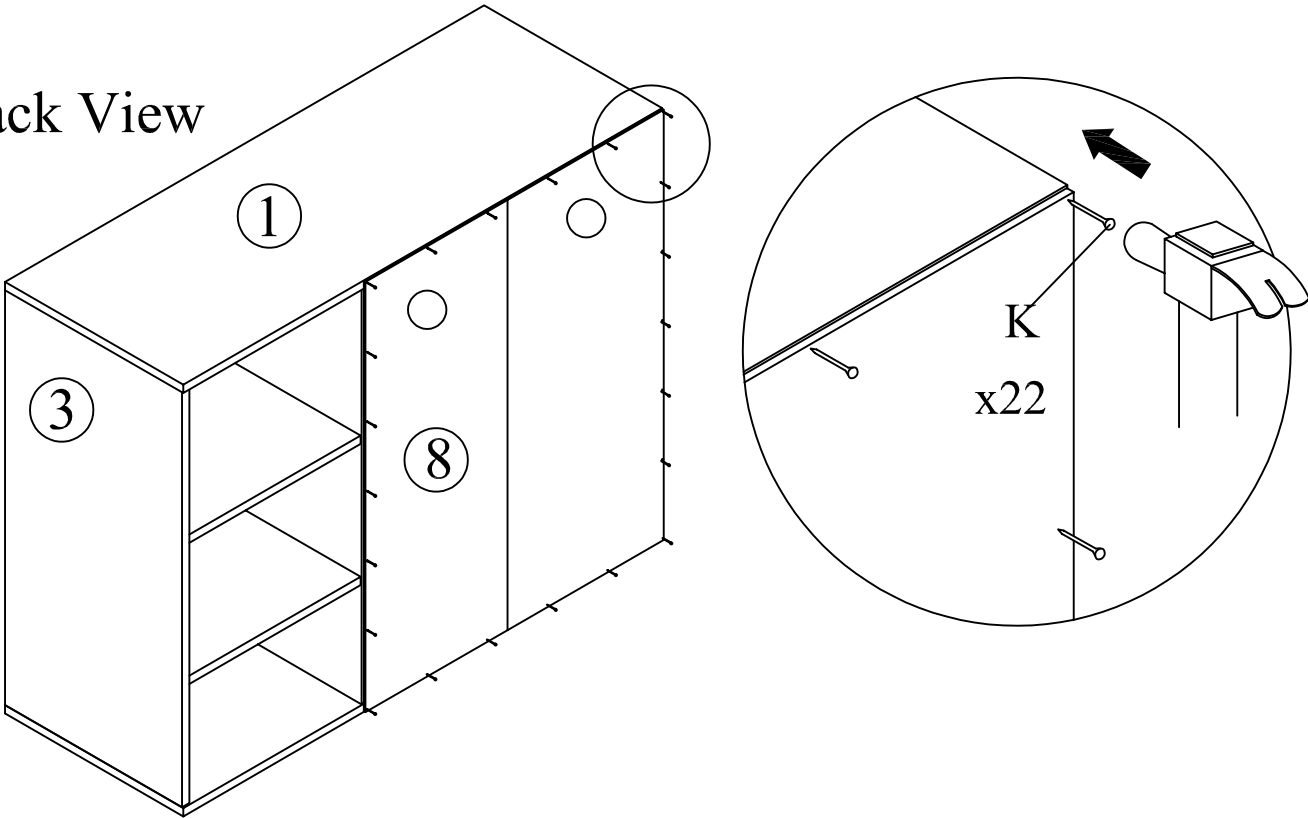
Step 10

Back View

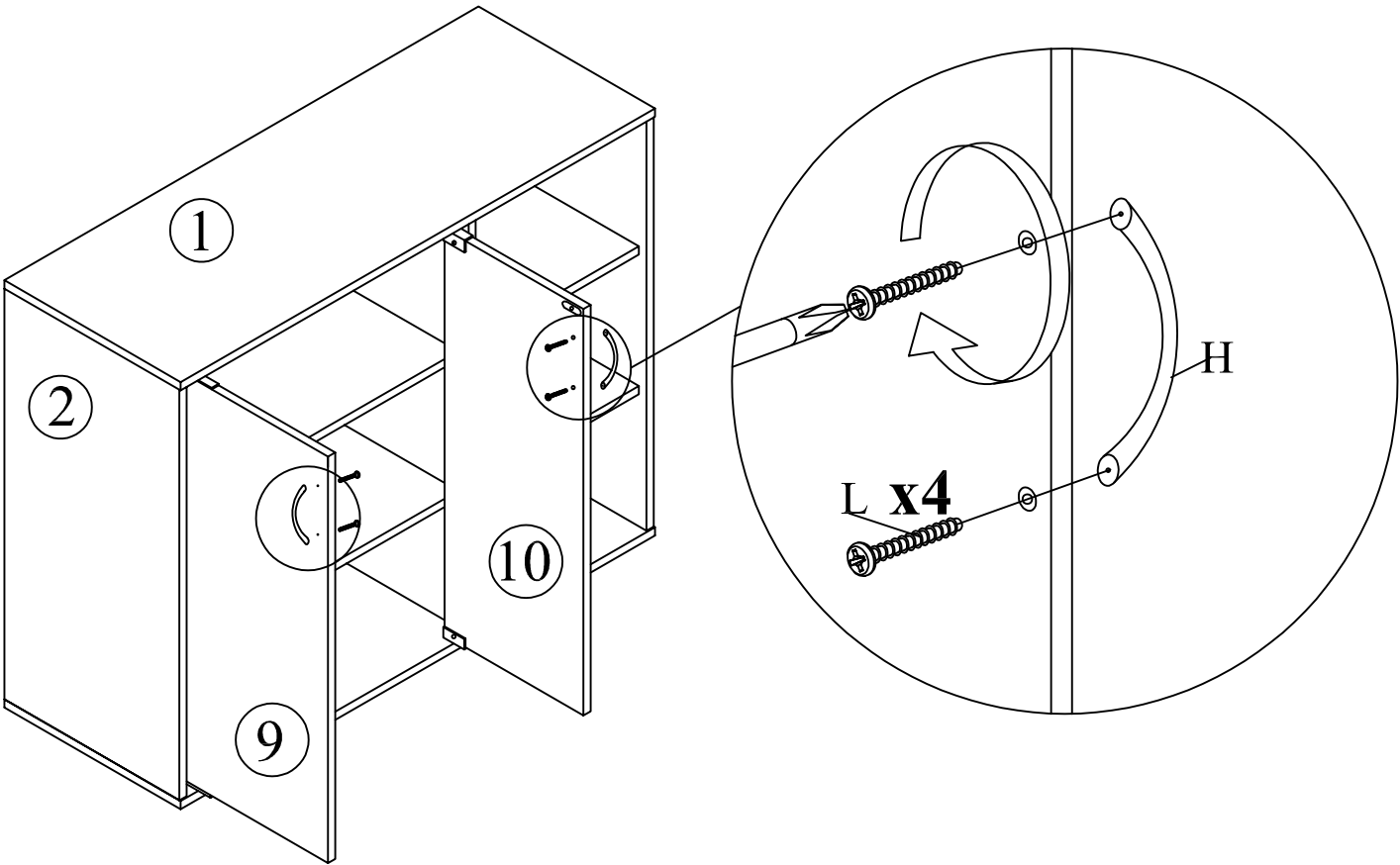


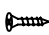
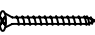
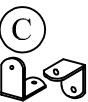

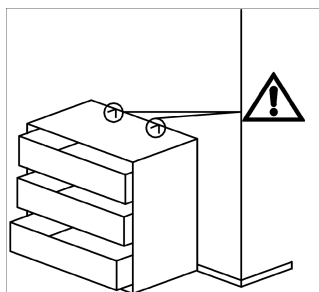
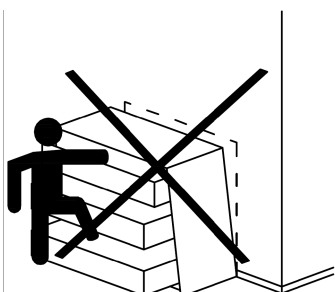
Step 11

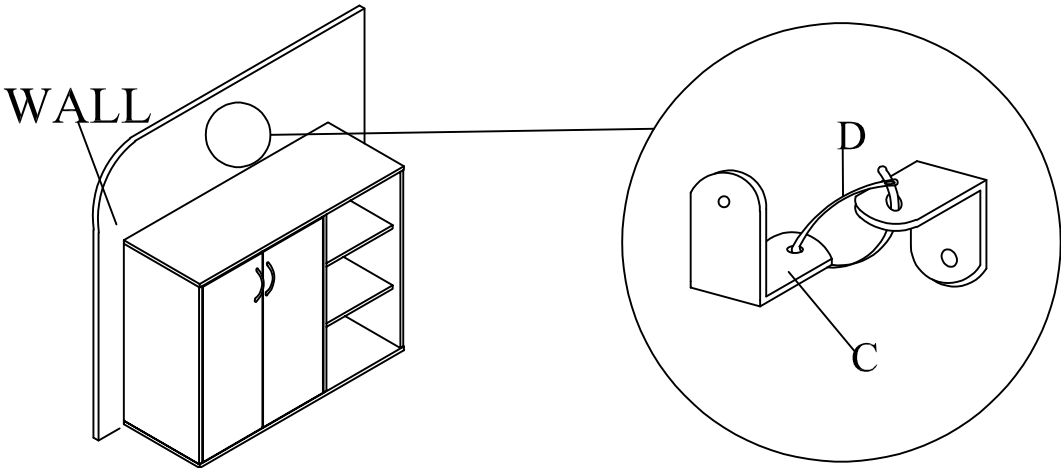
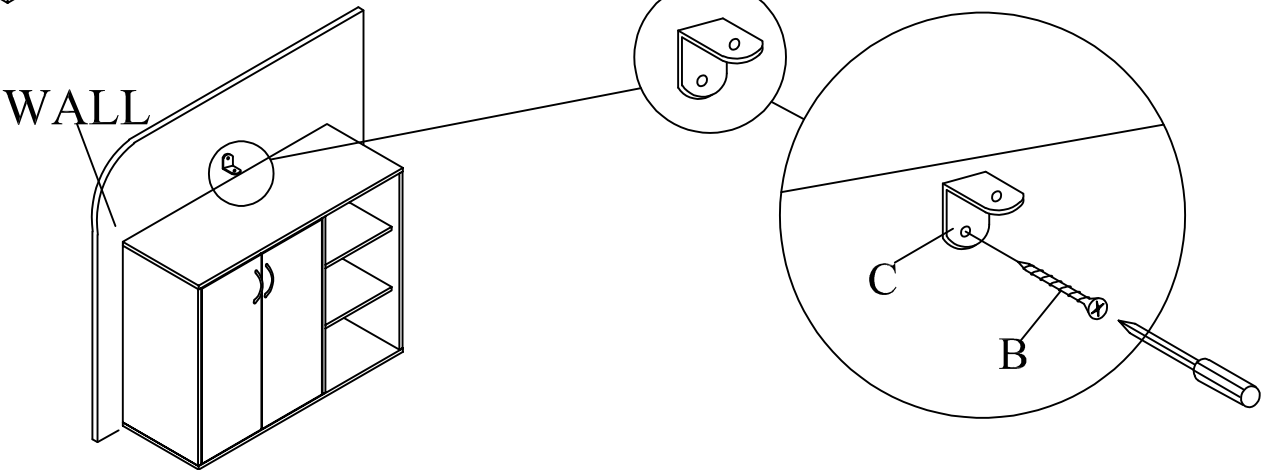
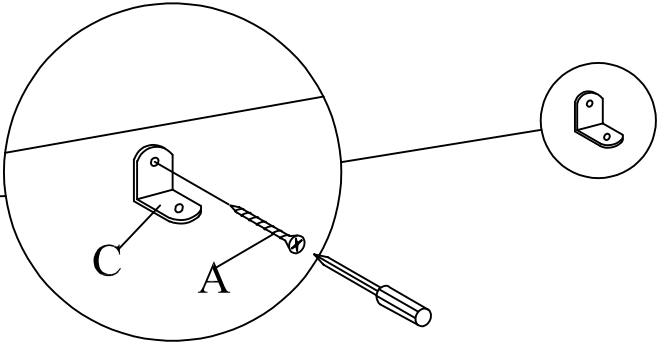
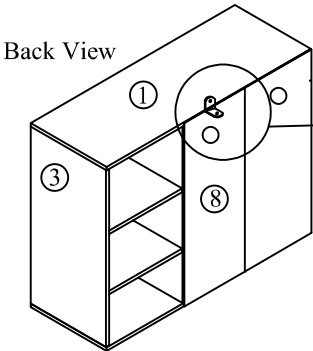
Back View



Step 12



<p>Anti - Tipping</p>	<p>Ⓐ</p>  <p>CSK Screw M3.5x16mm 1PC</p>	<p>Ⓑ</p>  <p>CSK Screw M4x50mm 1PC</p>	<p>Ⓒ</p>  <p>L BRACKET 2PCS</p>	<p>Ⓓ</p>  <p>CABLE TIE 1PC</p>		
---------------------------	---	---	--	---	--	---





# **RETURN / DAMAGE CLAIM INSTRUCTIONS**

1. **DO NOT** discard of the box / original packaging.

In case a return is required, the item must be returned in original box. Without this your return will not be accepted.

2. Take a photo of the box markings.

A photo of the markings (text) on the box is required in case a part is needed for replacement. This helps our staff identify your product number to ensure you receive the correct parts.

3. Take a photo / Video of Damage (if applicable).

A photo /Video of the damage is always required to file a claim and get your replacement or refund processed quickly. Please make sure you have the box even if it is damaged.

4. Send us an email with the images requested.

Email us directly with the attached images, order number (SOXXXX) and a description of your claim.

Auckland / Waikato / BOP Branch: [sales@tsbliving.co.nz](mailto:sales@tsbliving.co.nz)

Christchurch Branch: [customersupport@tsbliving.co.nz](mailto:customersupport@tsbliving.co.nz)

Wellington Branch: [wellington@tsbliving.co.nz](mailto:wellington@tsbliving.co.nz)