


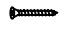




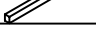

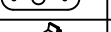

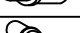



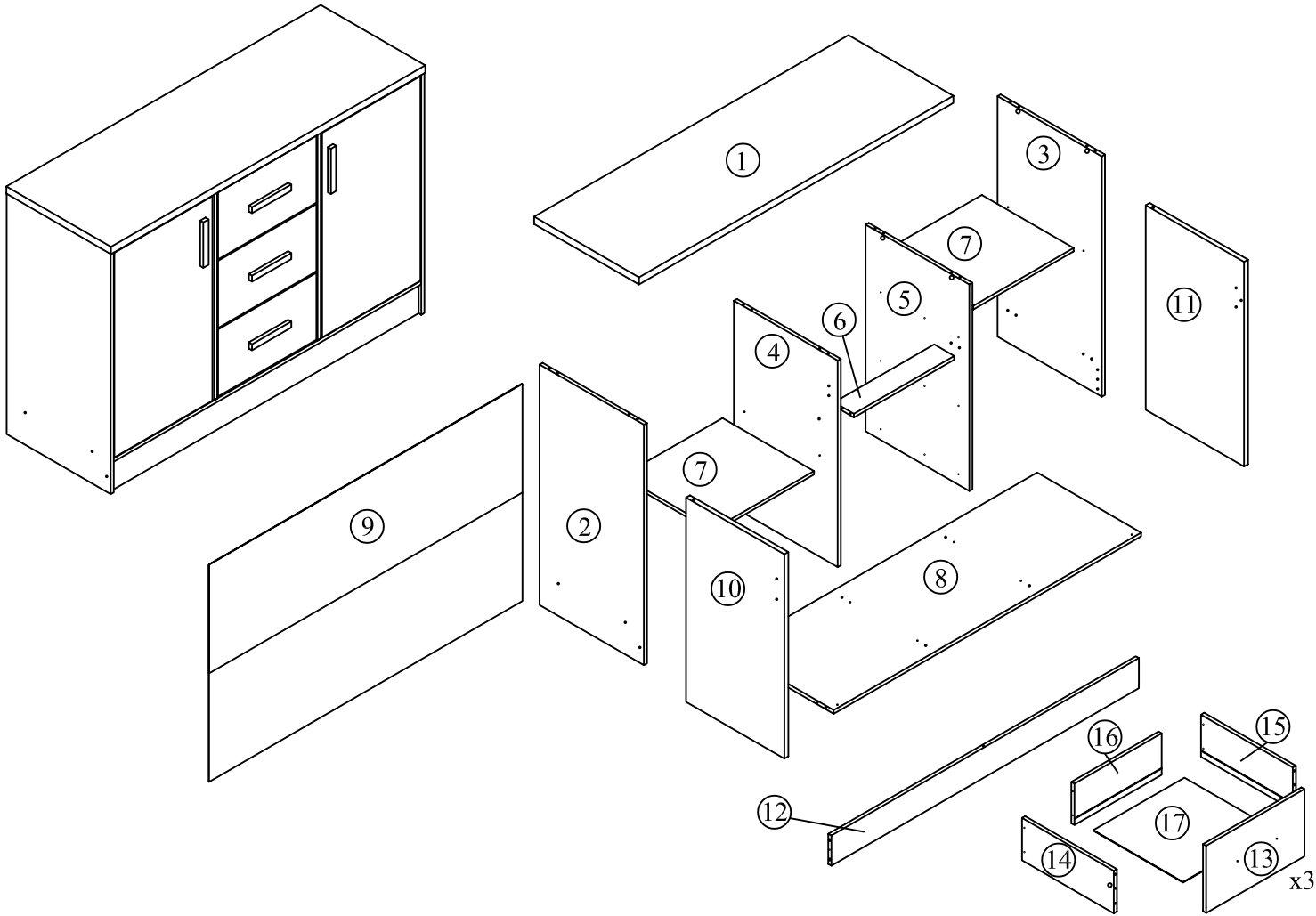
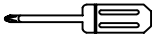
Assembly Instructions

Model : MPC 8045-B

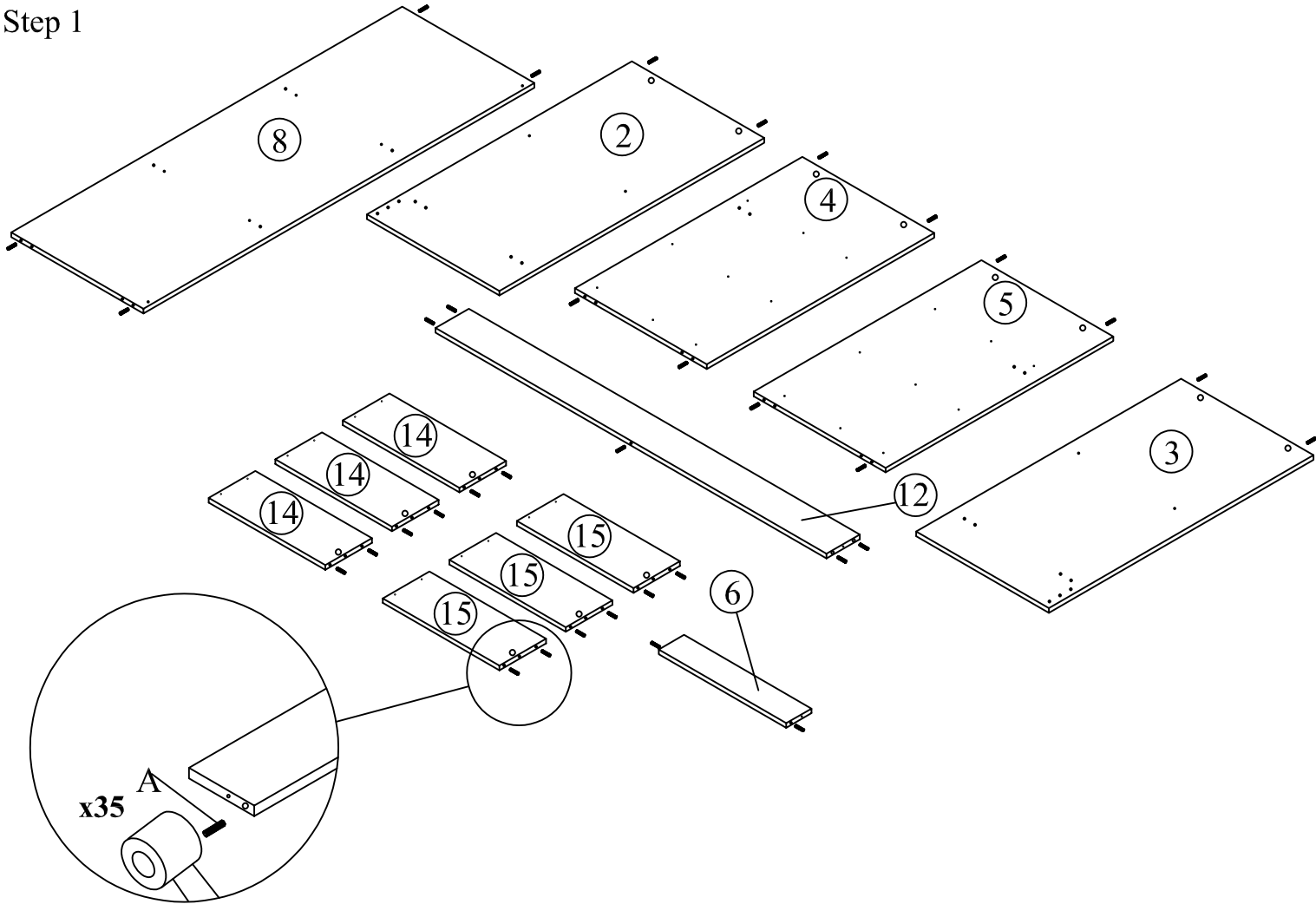
Part List		QTY
1	Top Panel	1
2	Right Side Panel	1
3	Left Side Panel	1
4	Center Left Panel	1
5	Center Right Panel	1
6	Support Panel	1
7	Shelf Panel	2
8	Bottom Panel	1
9	Back Panel	1
10	Door Left	1
11	Door Right	1
12	Leg Panel	1
13	Drawer Front Panel	3
14	Drawer Side Panel (L)	3
15	Drawer Side Panel (R)	3
16	Drawer Back Panel	3
17	Drawer Bottom Panel	3

Hardware		QTY
A	Wood Dowel 6 x 30mm 	35
B	Mini Fix Bolt 	14
C	Mini Fix Housing 	14
D	CSK Screw M4x38mm 	24
E	CSK Screw M3.5x12mm 	38
F	14" Drawer Slide 	3
G	Nail 	48
H	White Nail Leg 	4
I	Handle 	5
J	CSK Screw M4x25mm 	10
K	Magnet Plate 	2
L	Magnet 	2
M	Door Support 	4
N	Shelf Support 	8

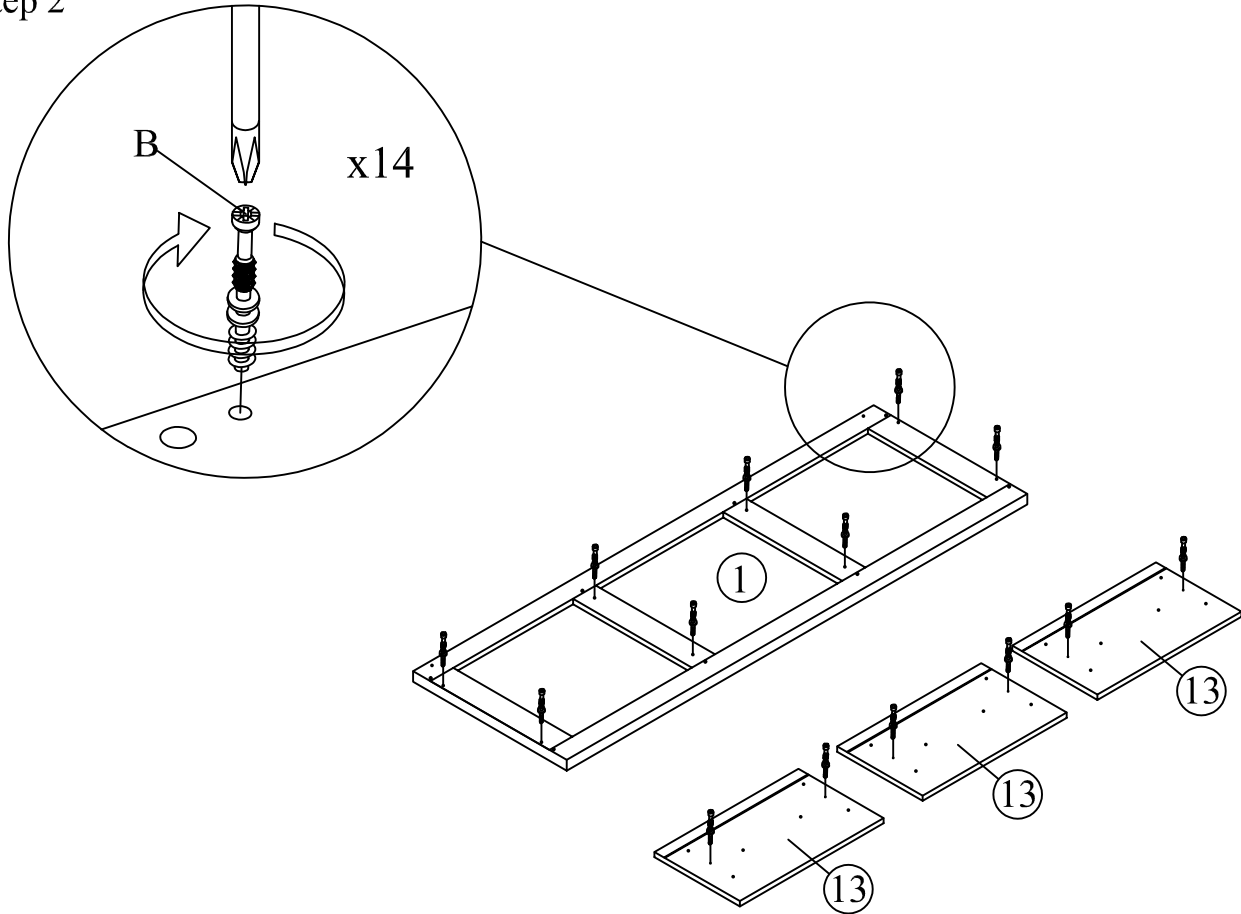
*Please use screwdriver when assemble
CSK screw.Screwdriver (not provided)



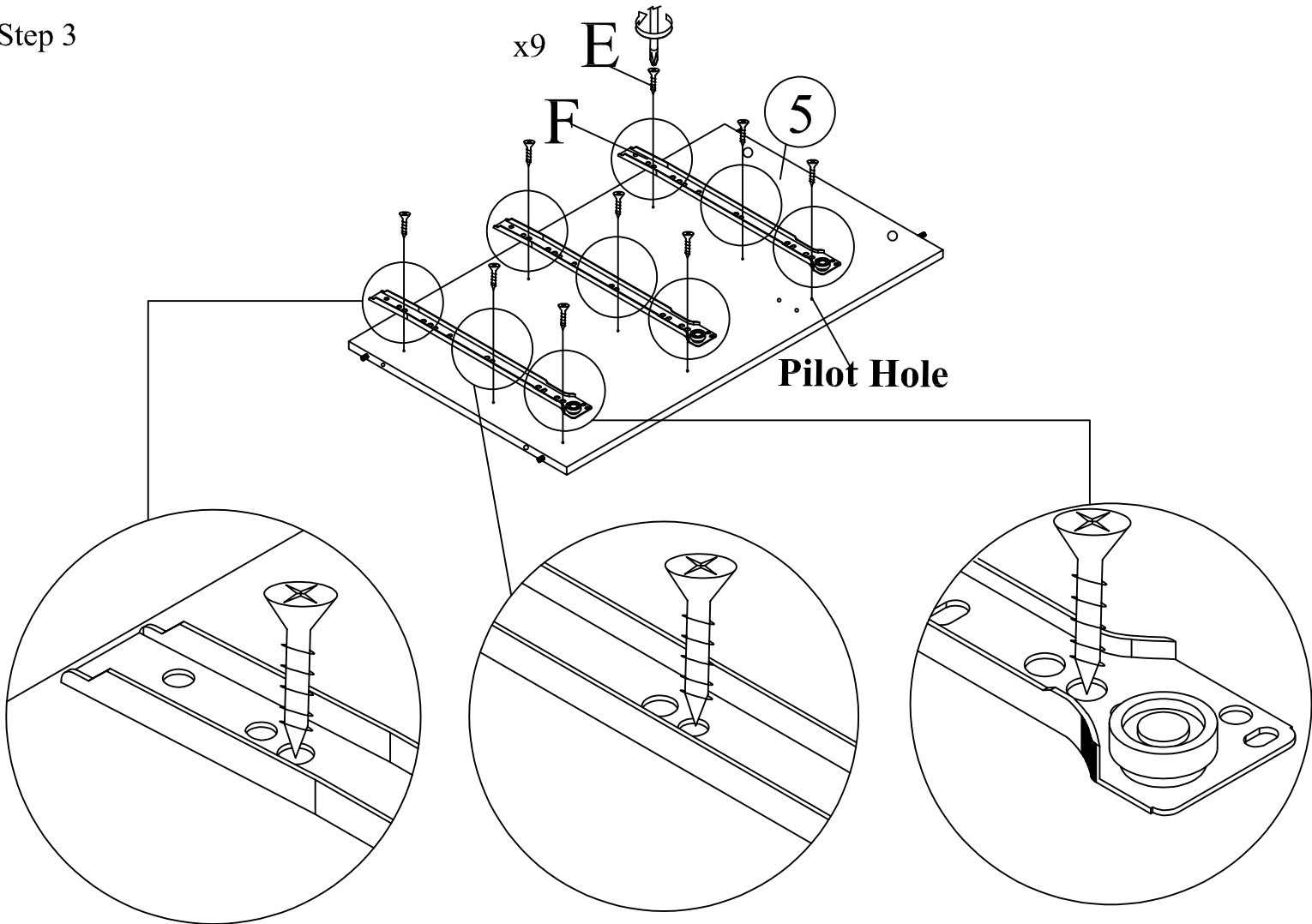
Step 1



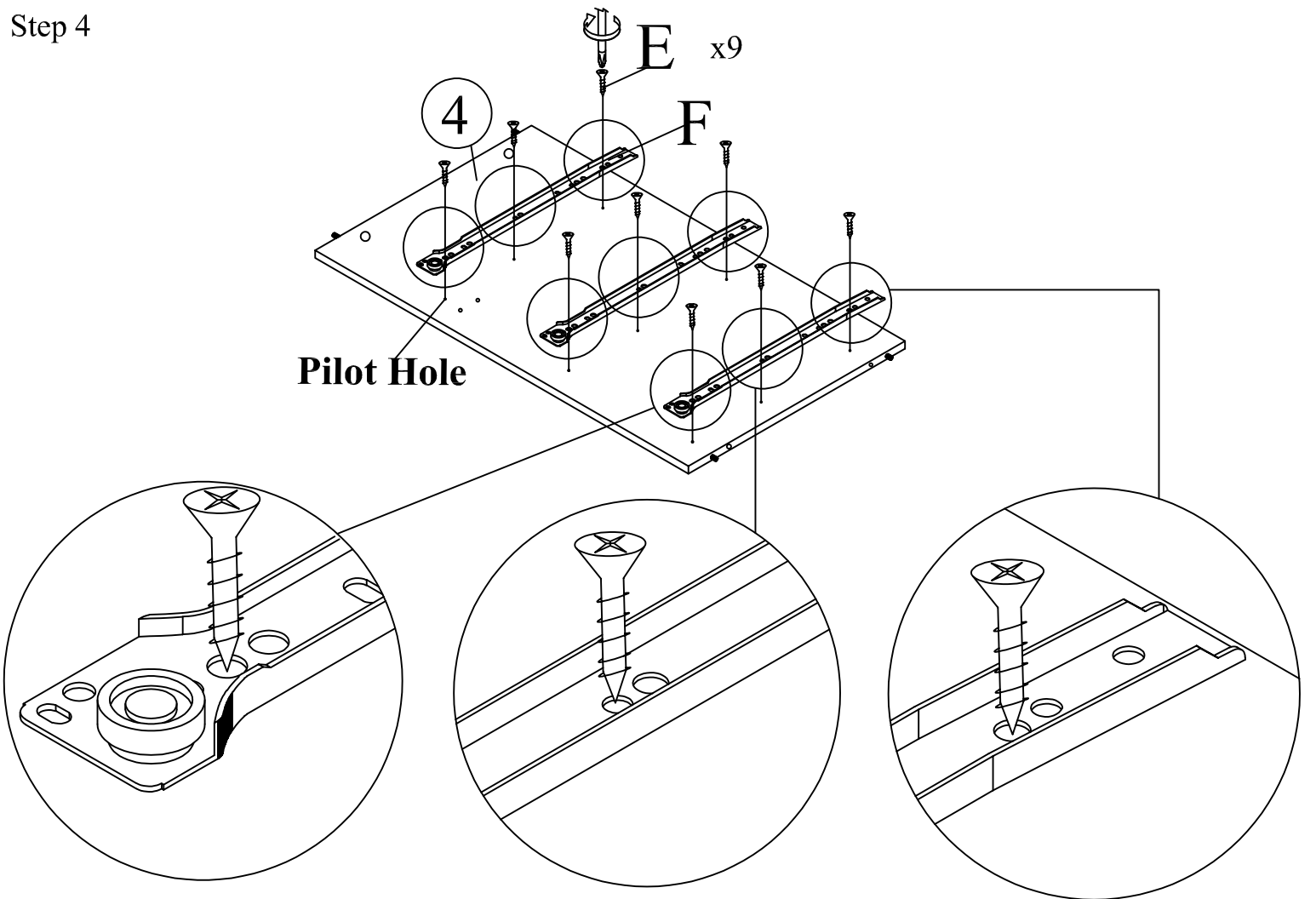
Step 2



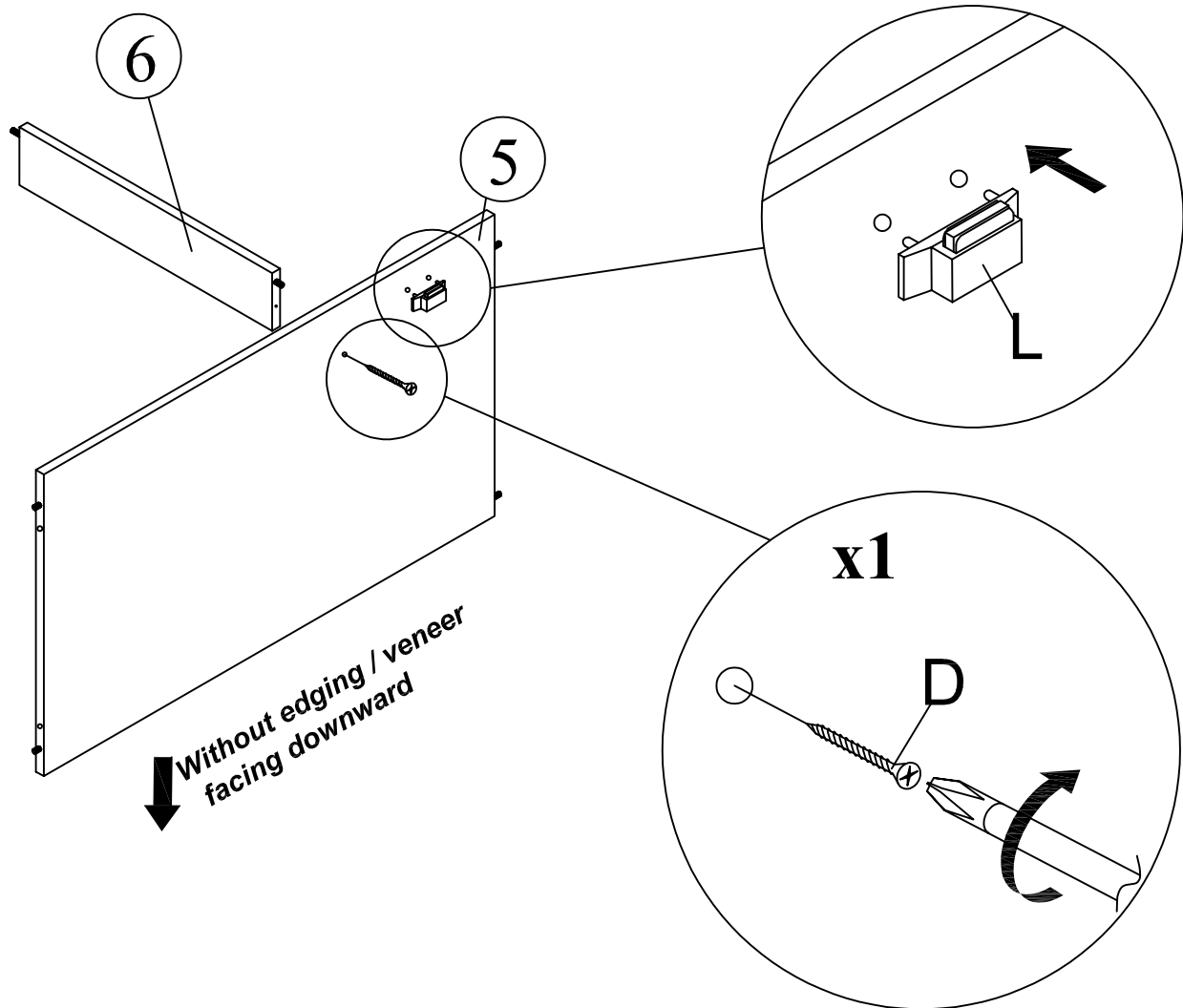
Step 3



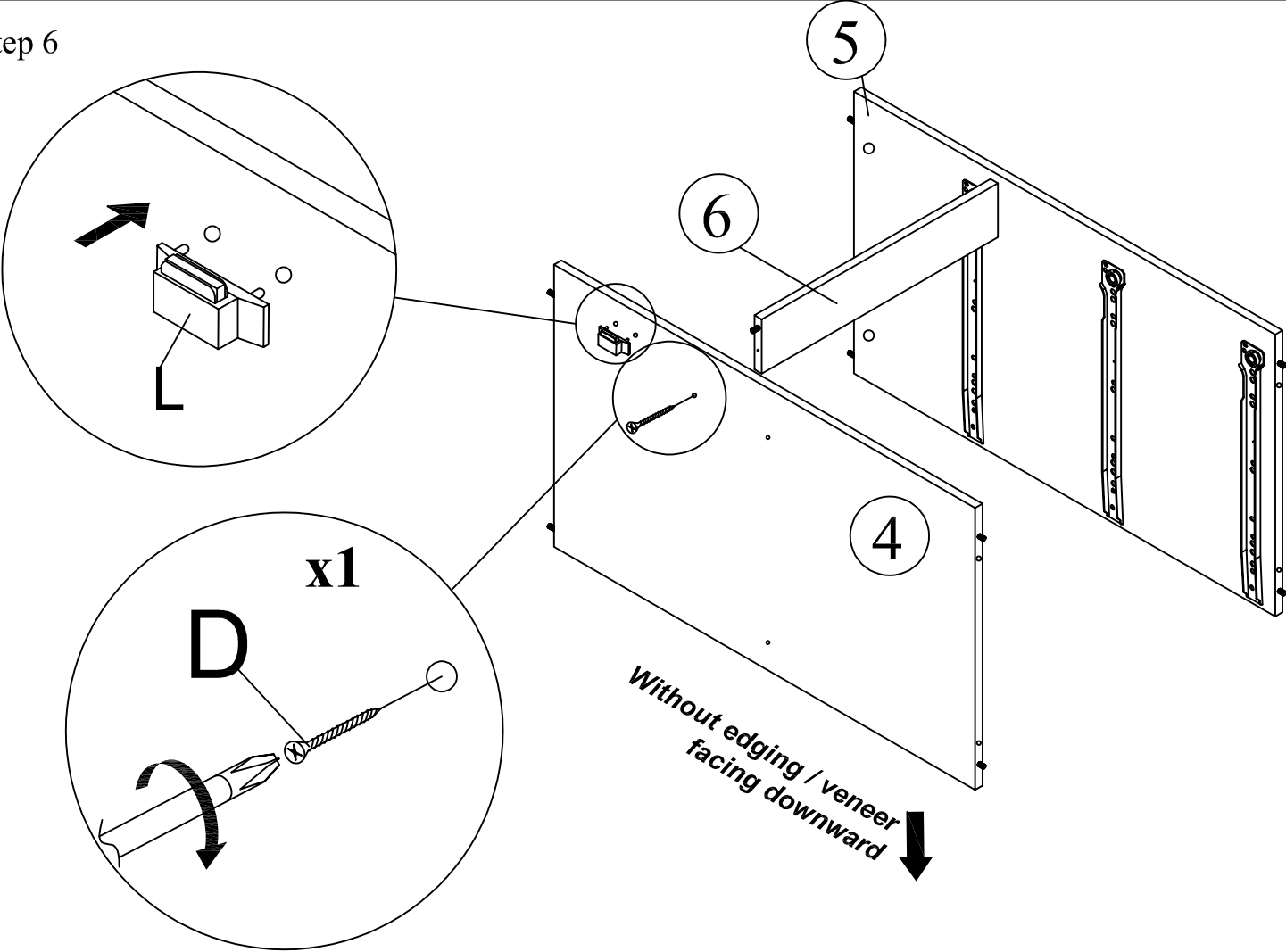
Step 4



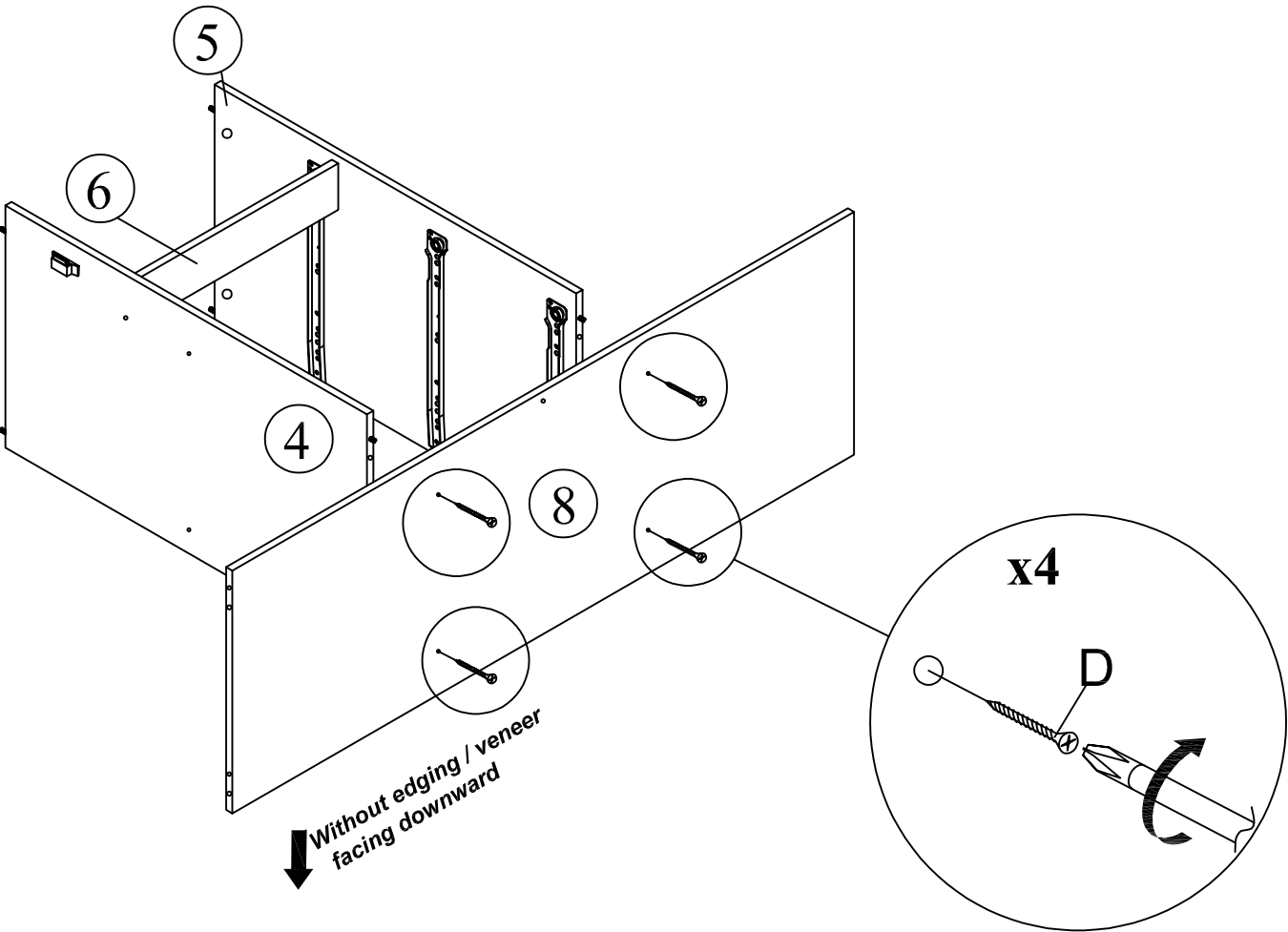
Step 5



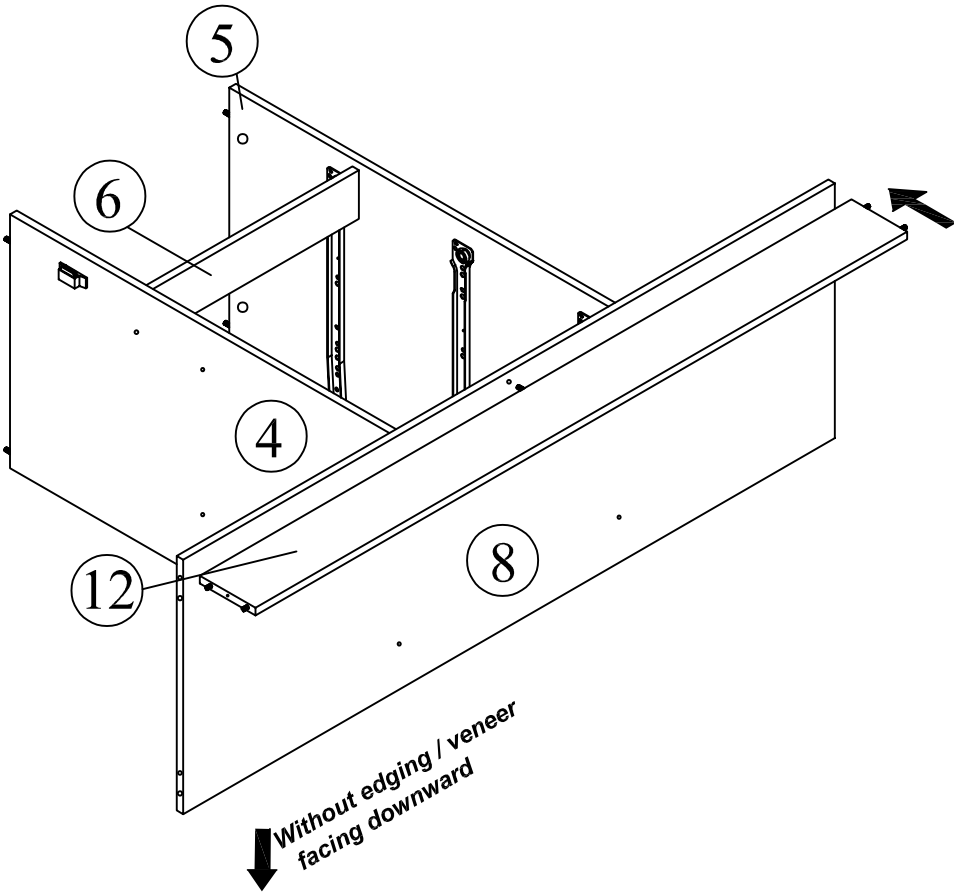
Step 6



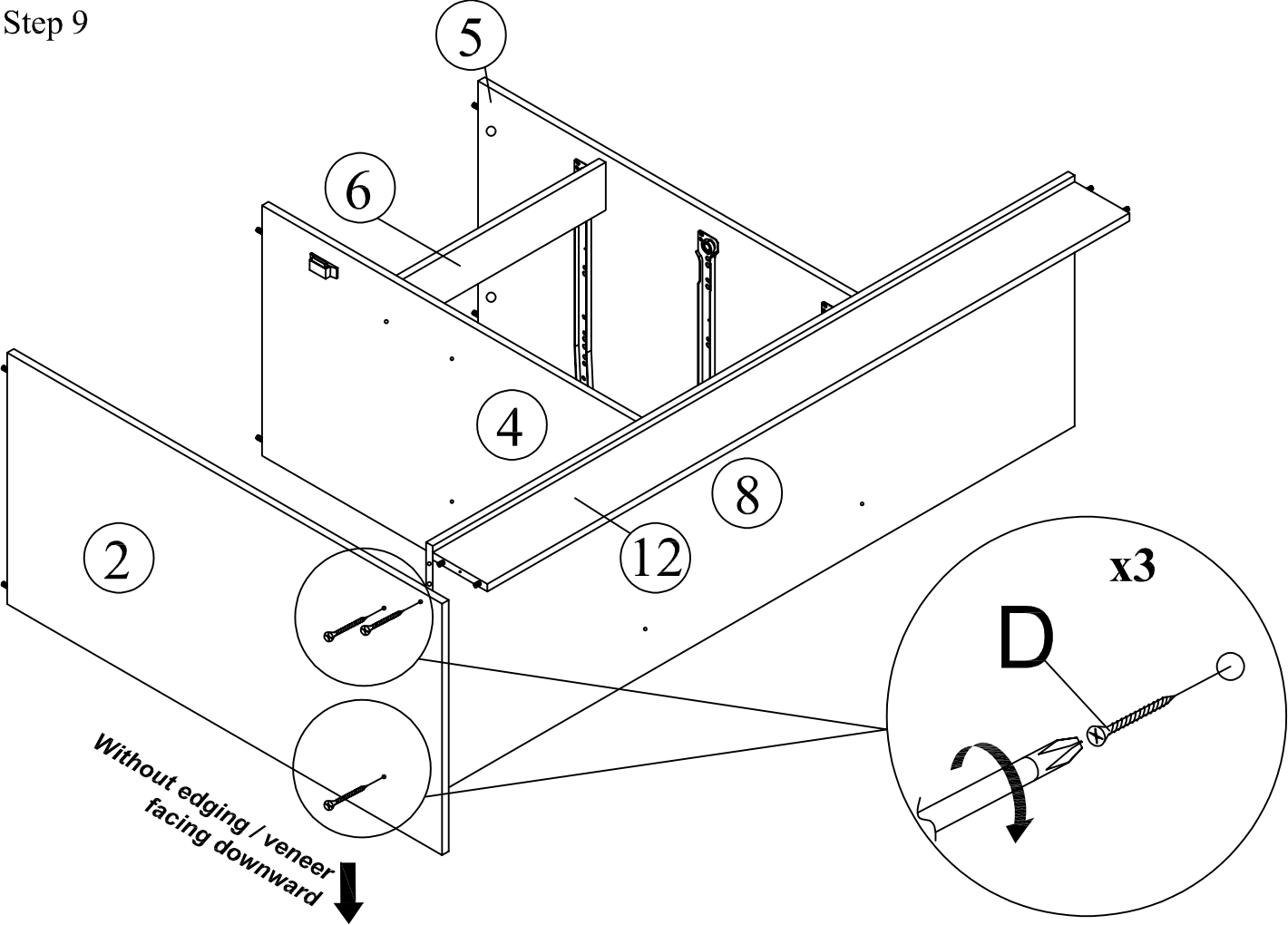
Step 7



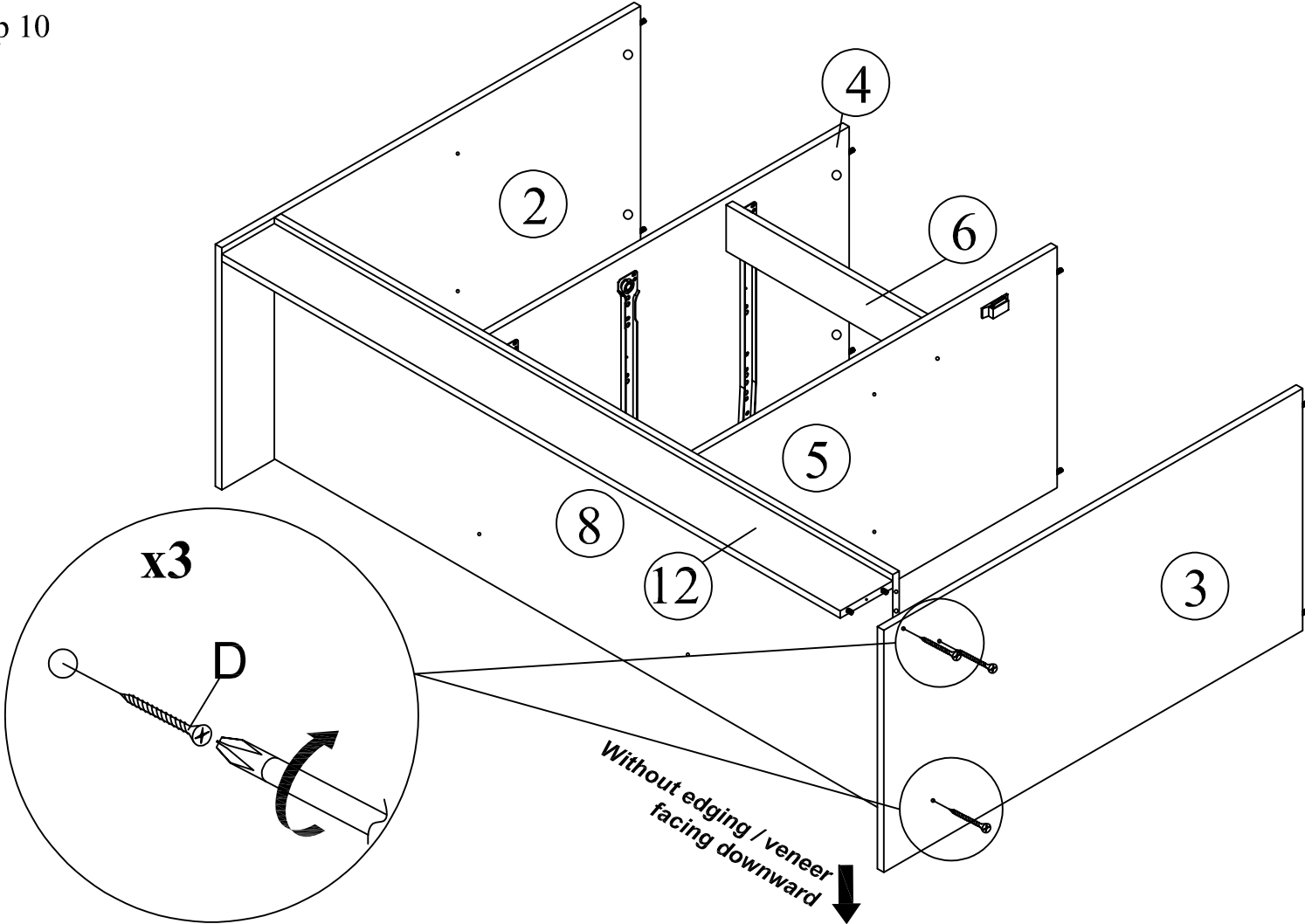
Step 8



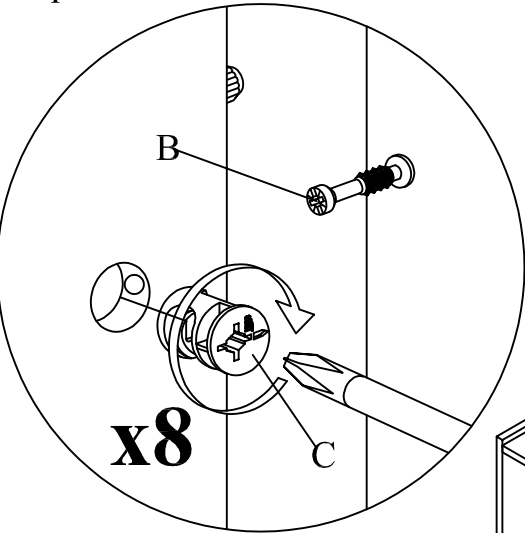
Step 9



Step 10

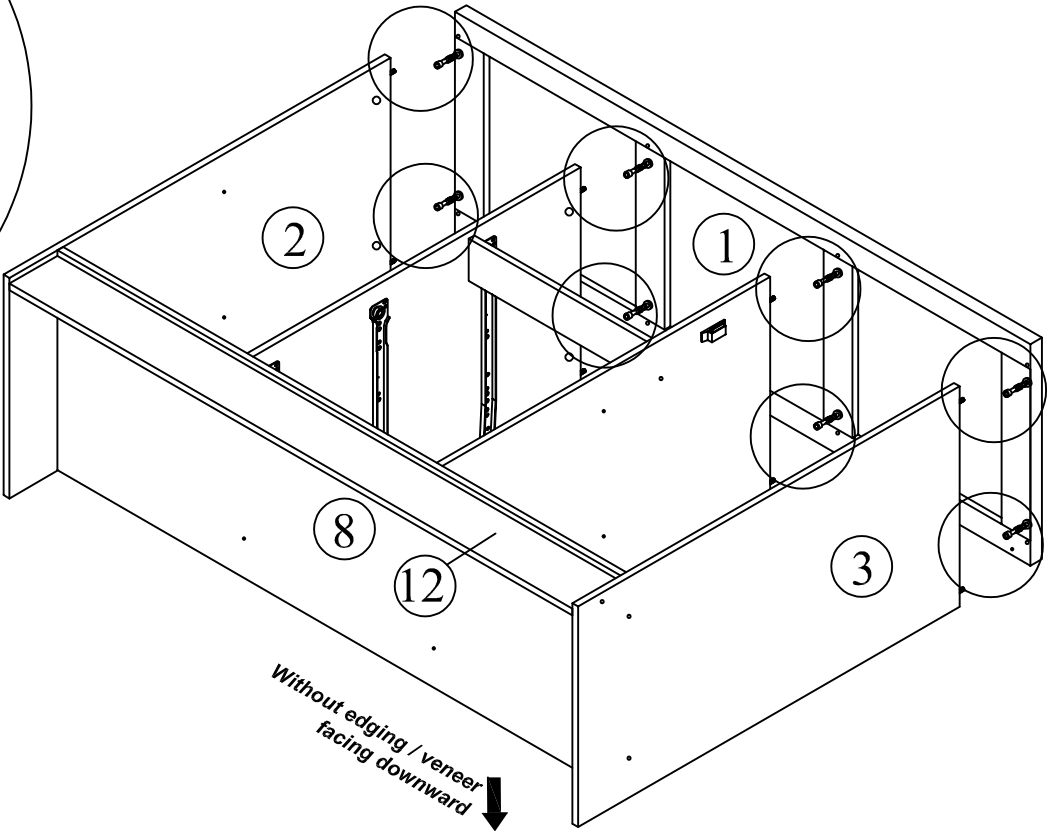


Step 11

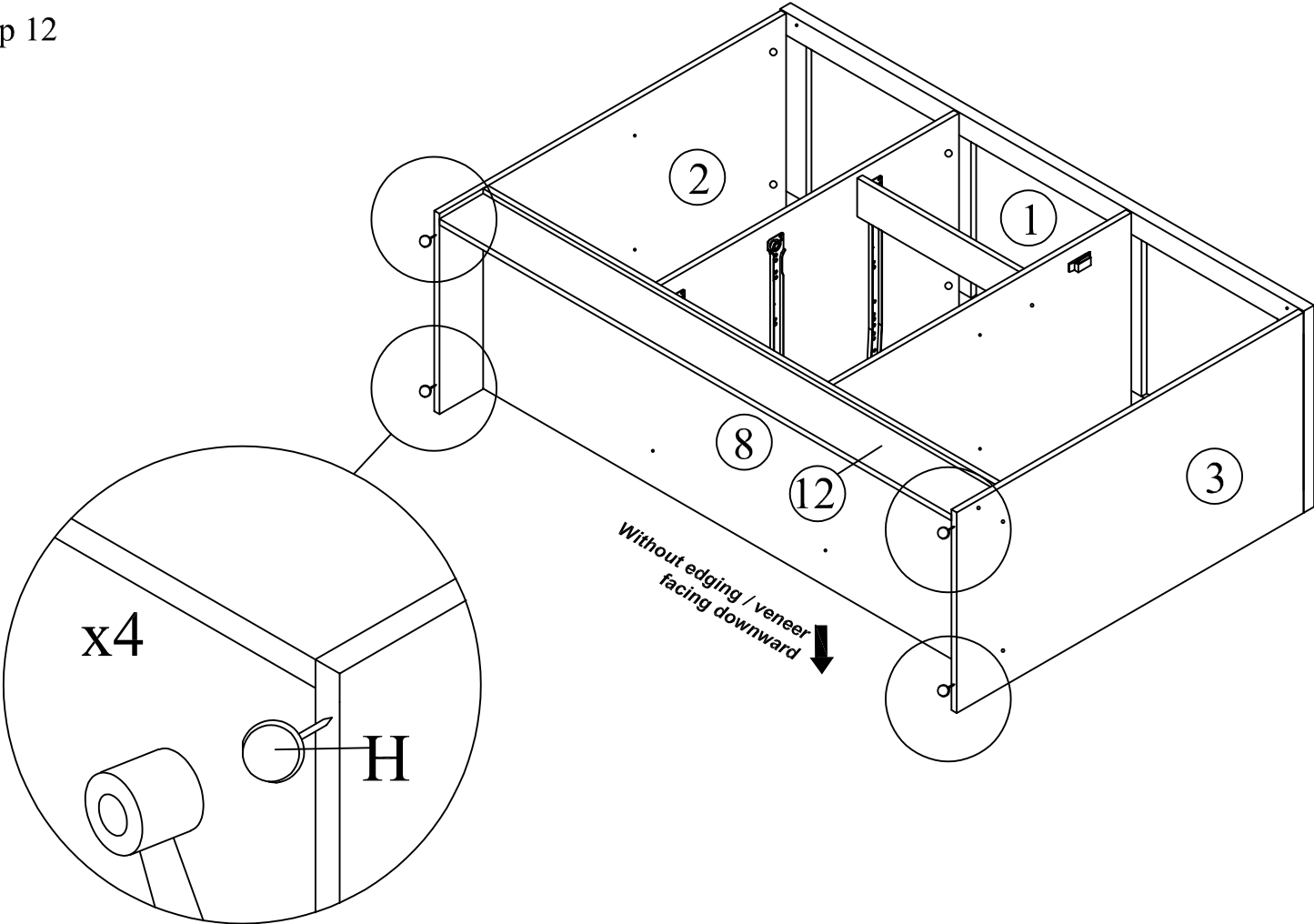


This is how a mini fix works...

The head of the mini fix housing goes into the open mouth of the mini fix bolt. You then turn the mini fix housing so it tightens over the mini fix bolt.

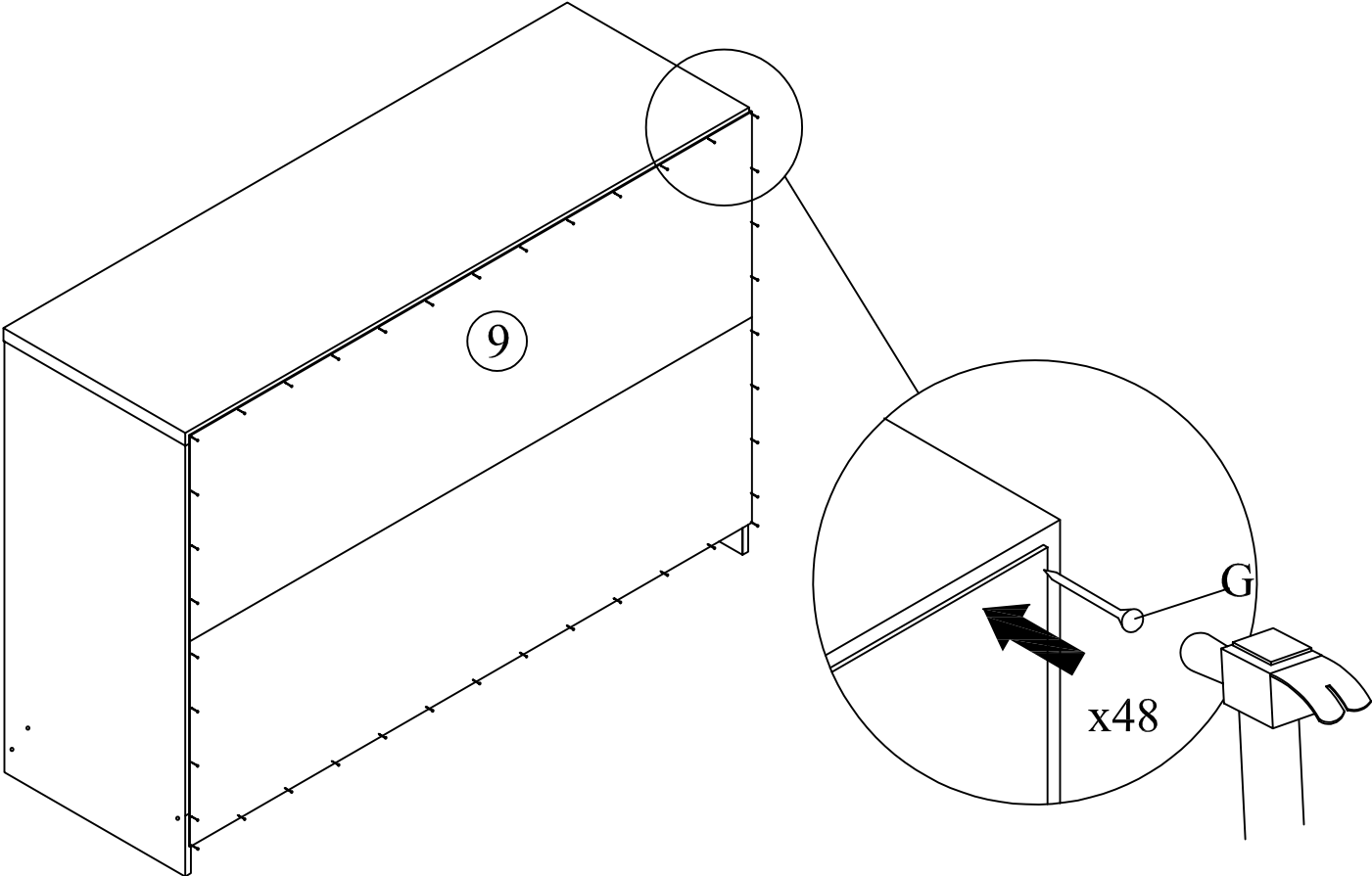


Step 12

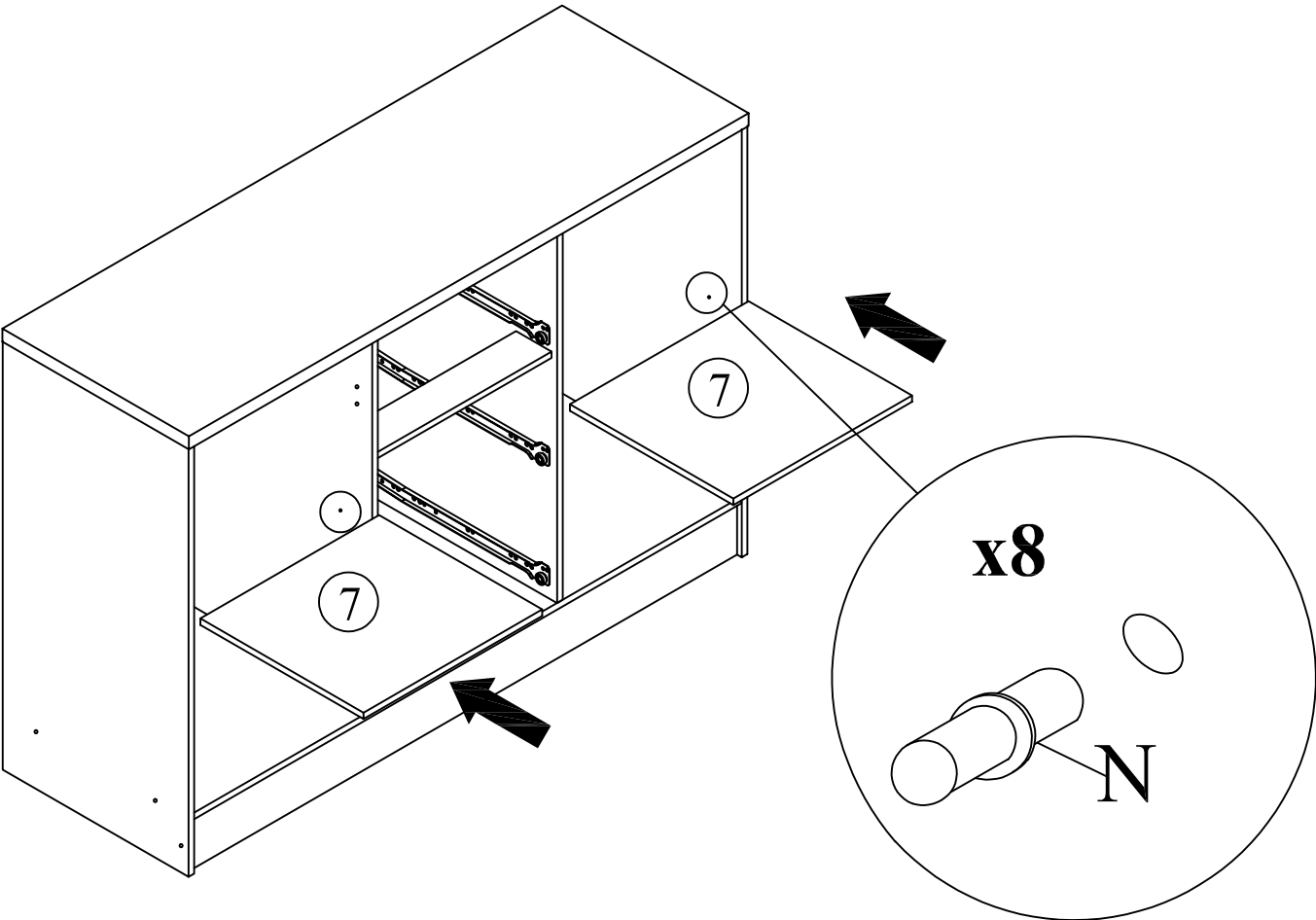


Step 13

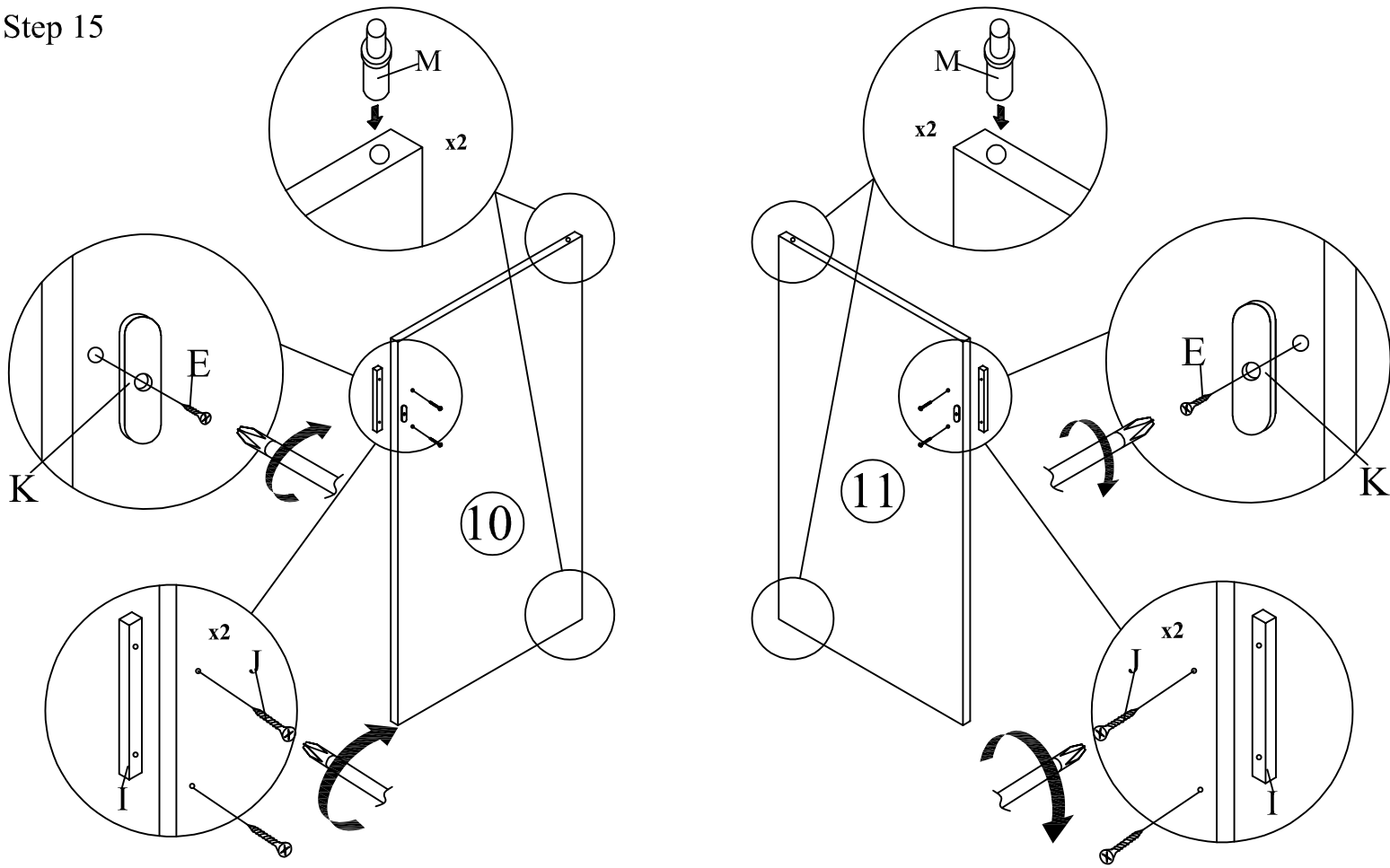
BACK VIEW



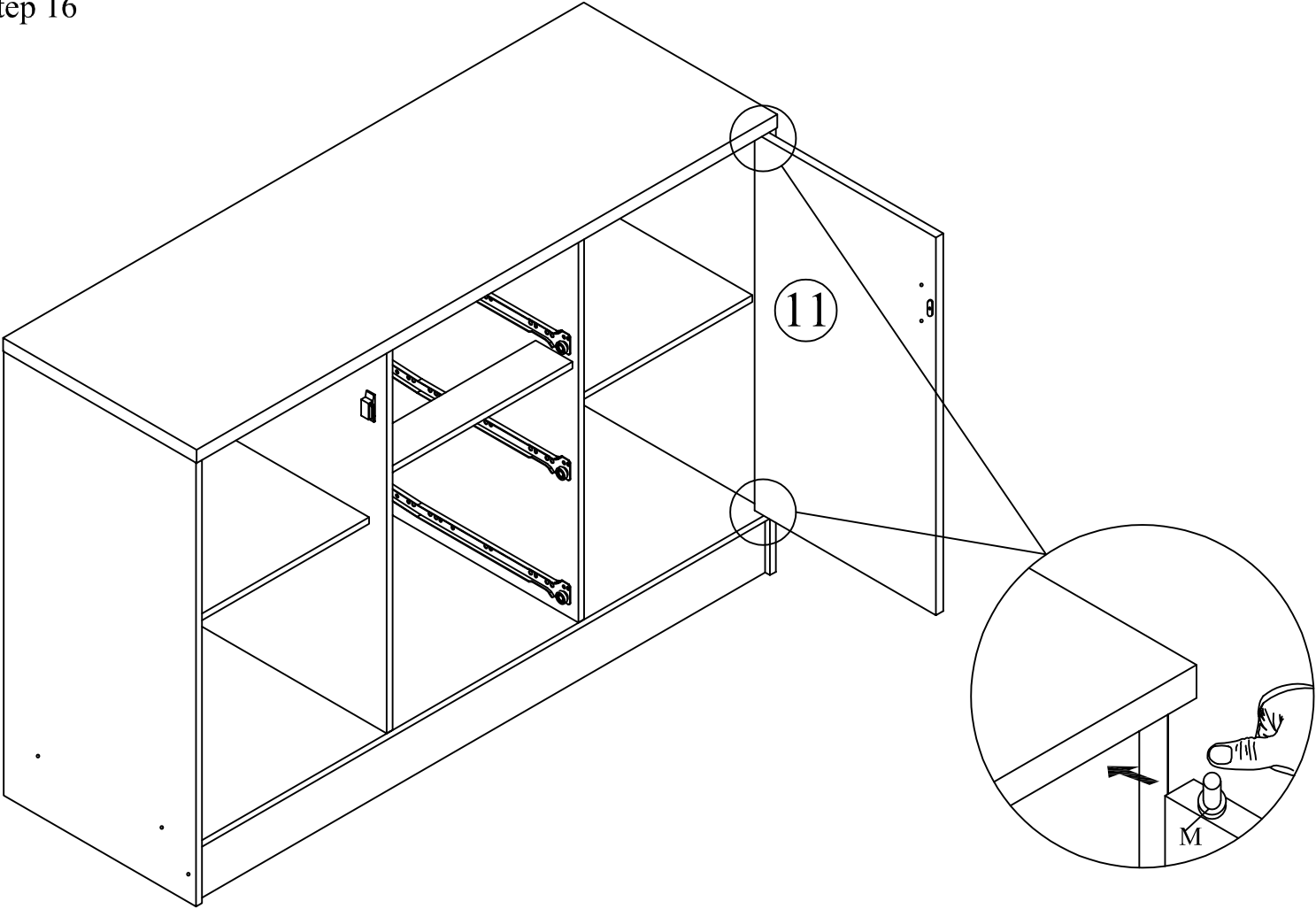
Step 14



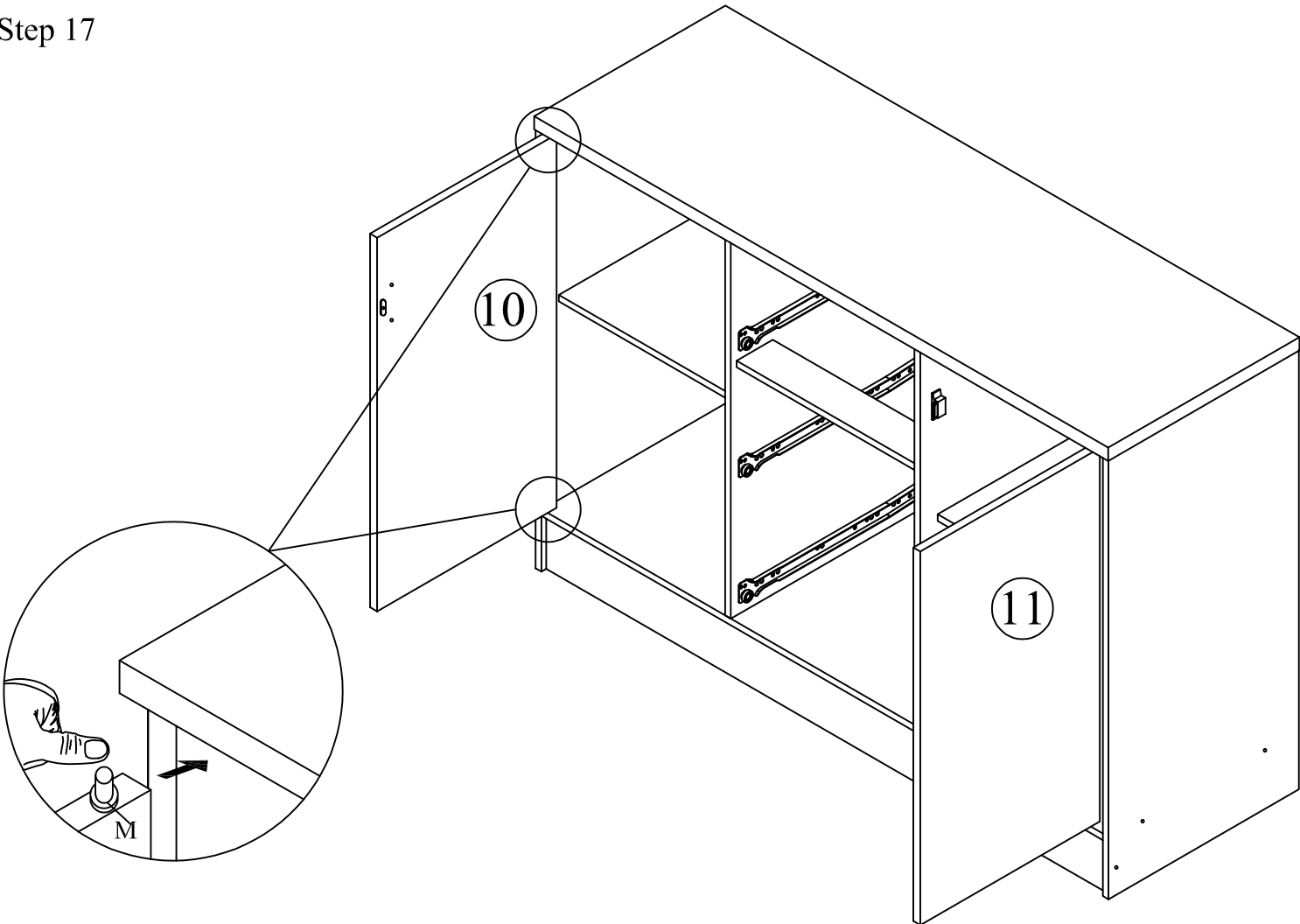
Step 15



Step 16

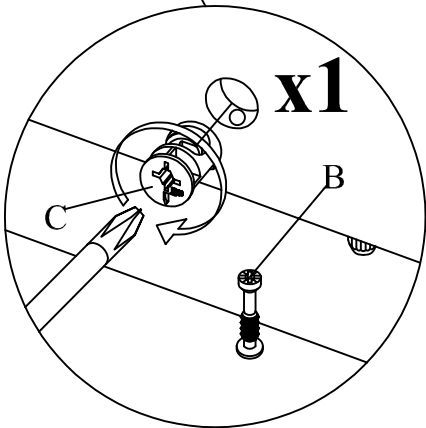
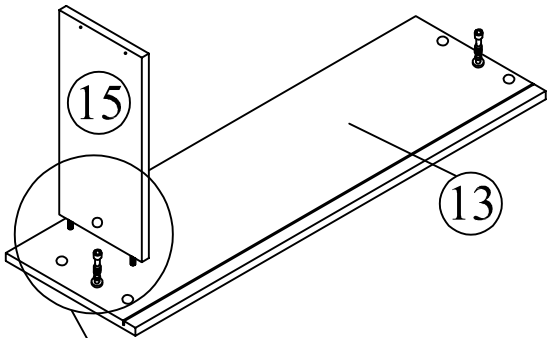


Step 17



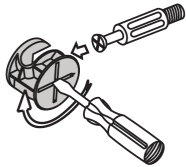
Step 18

Step 18.1



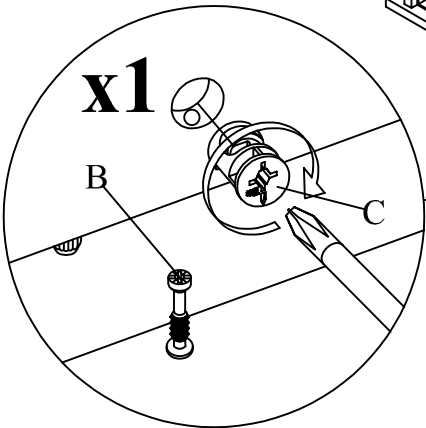
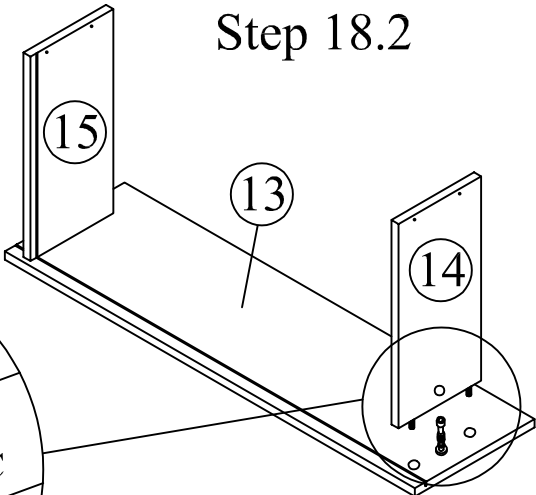
This is how a mini fix works...

The head of the mini fix housing goes into the open mouth of the mini fix bolt. You then turn the mini fix housing so it tightens over the mini fix bolt.

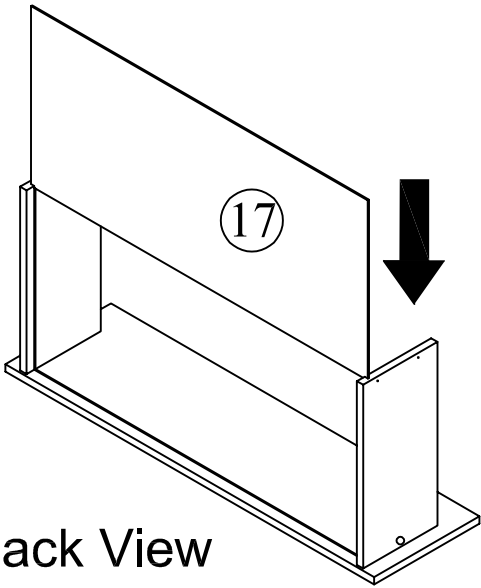


x3

Step 18.2

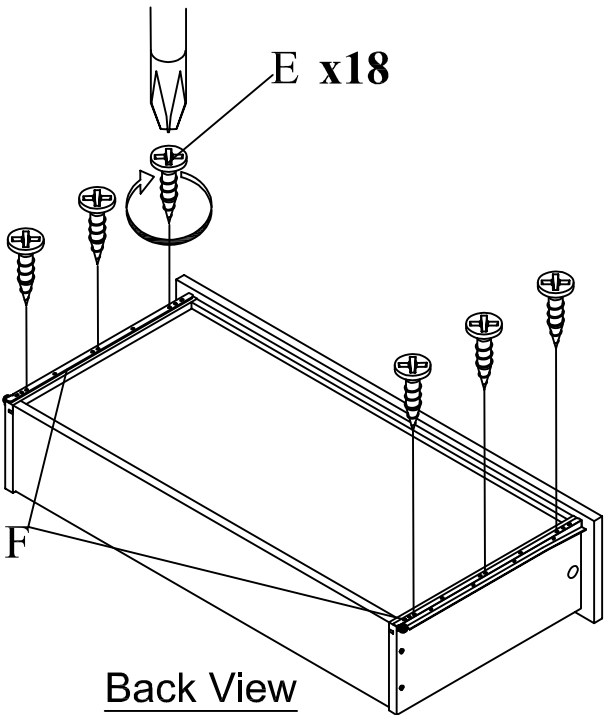
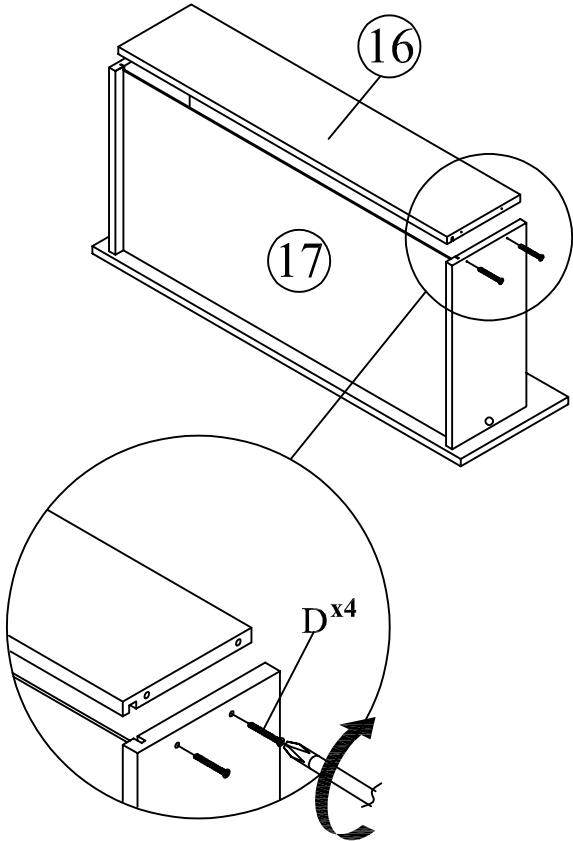


Step 19.1

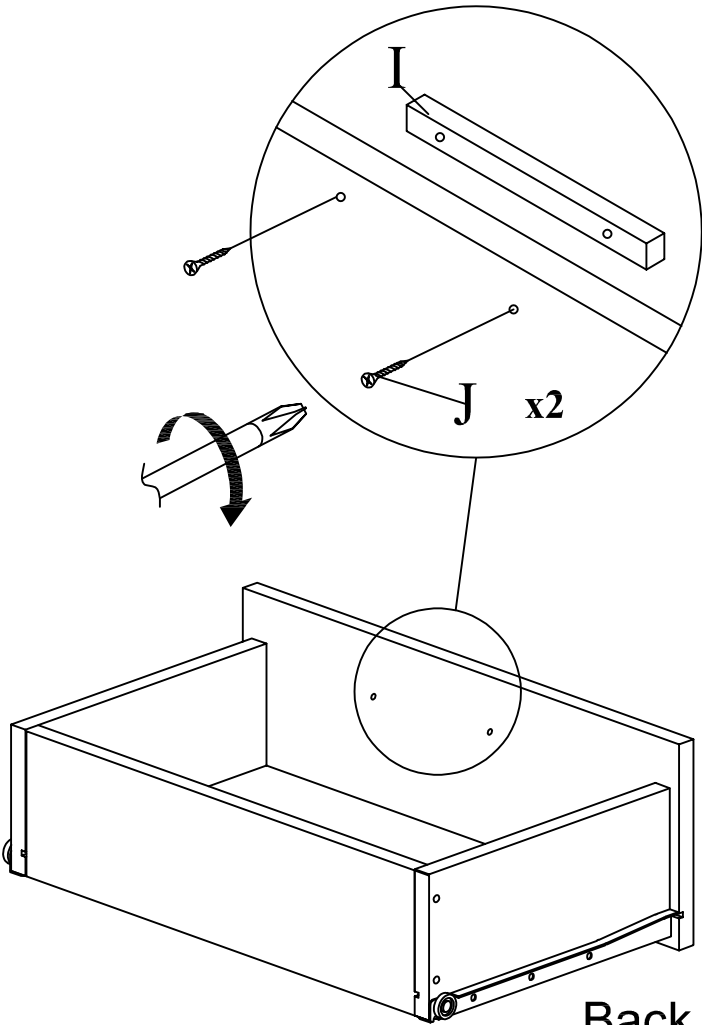


Back View

Step 19.2

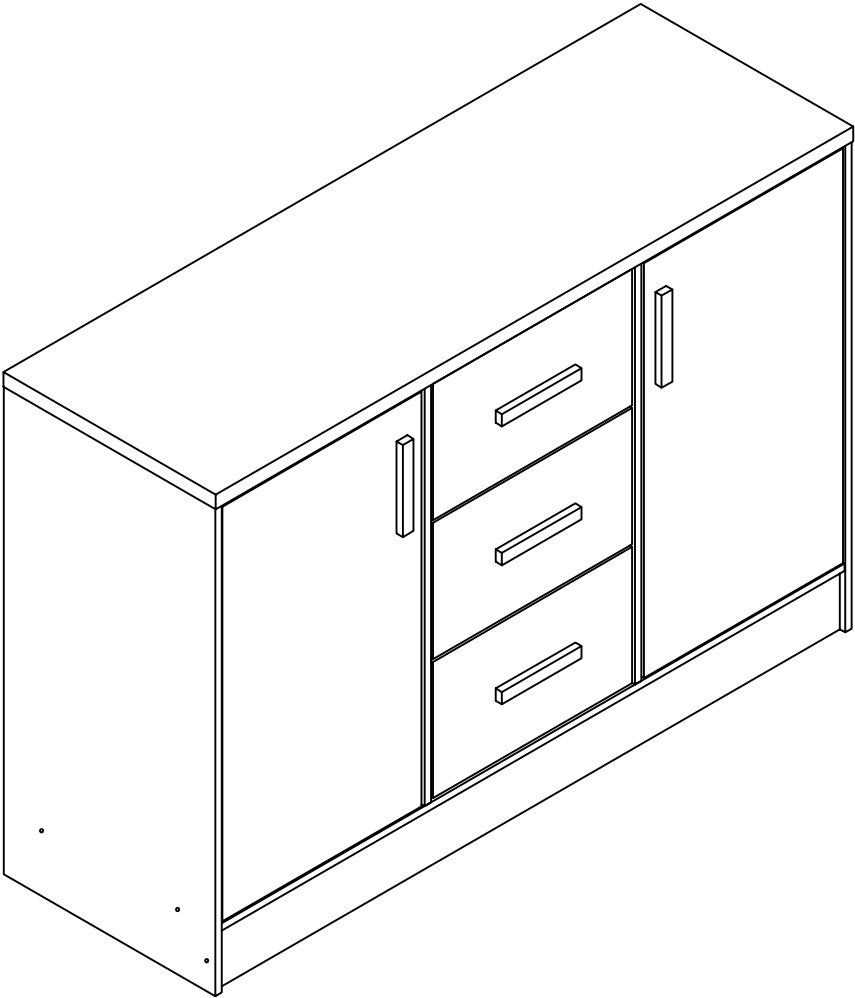
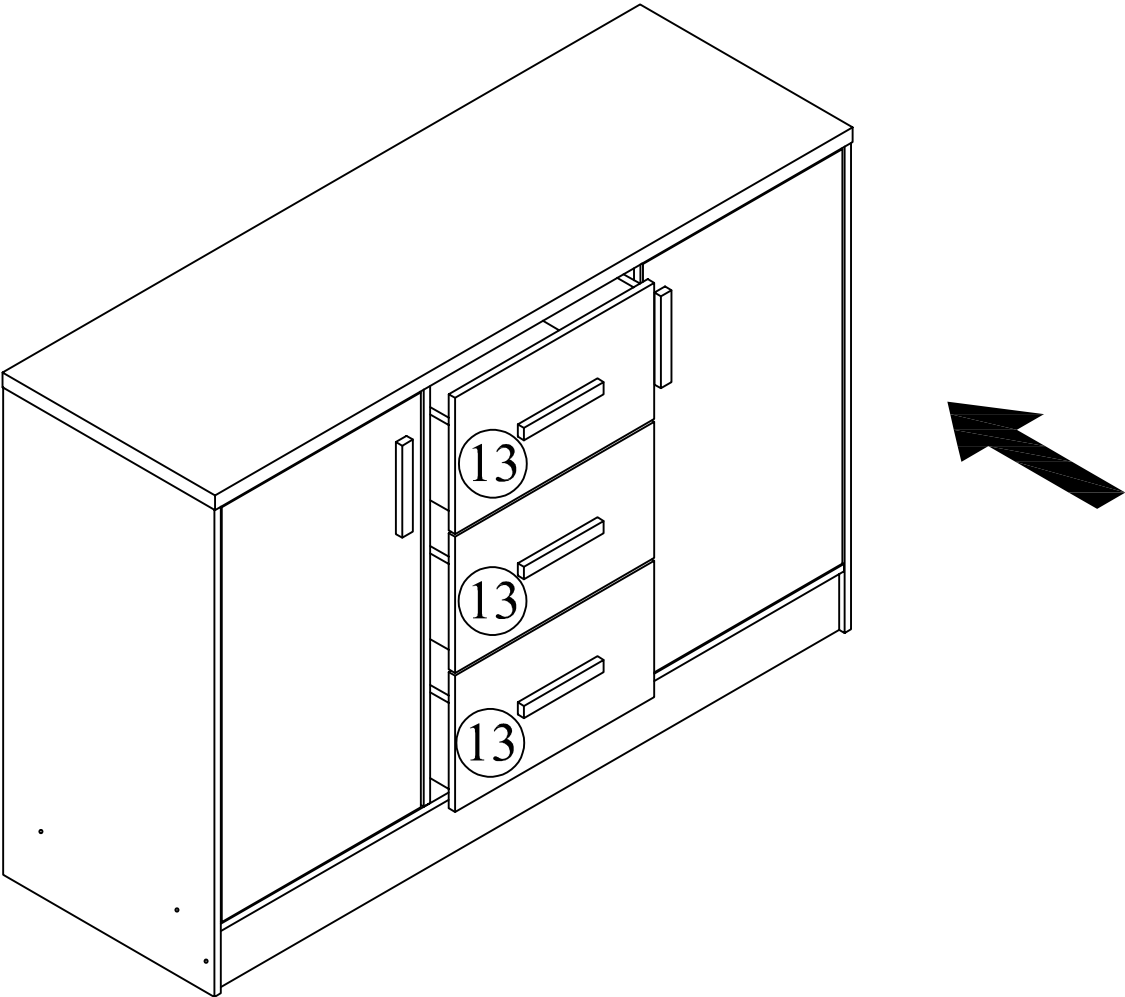


Back View



Back View

Step 21



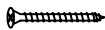
Anti -
Tipping

(A)



CSK Screw
M3.5x16mm
1PC

(B)



CSK Screw
M4x50mm
1PC

(C)

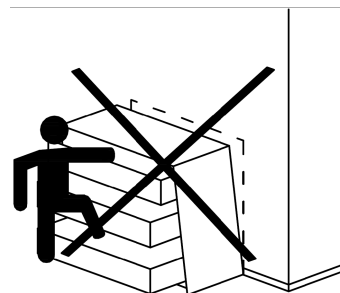
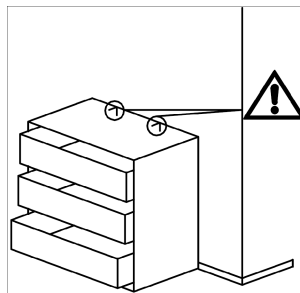


L BRACKET
2PCS

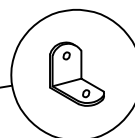
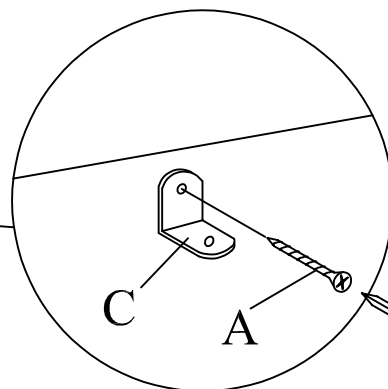
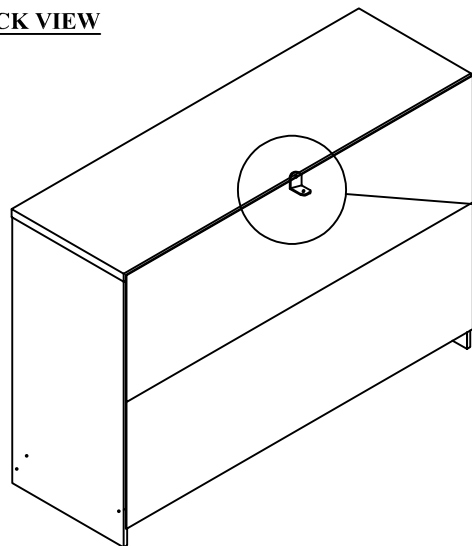
(D)



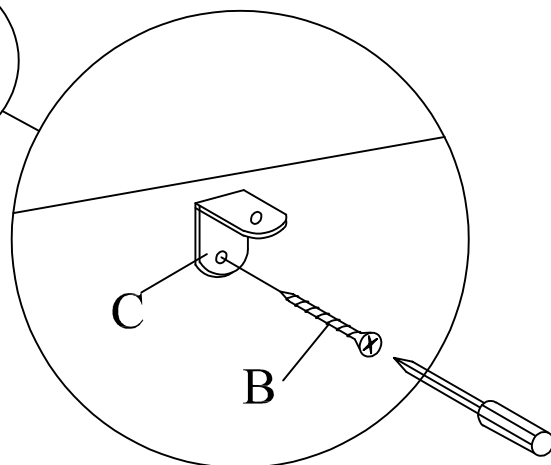
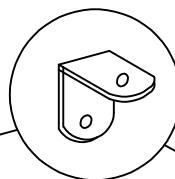
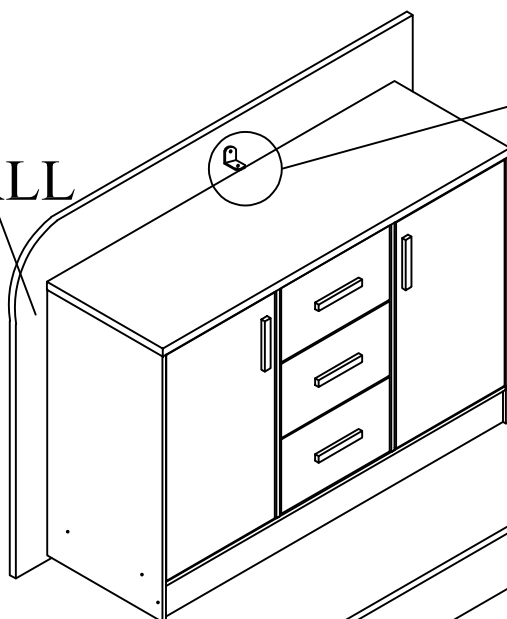
CABLE TIE
1PC



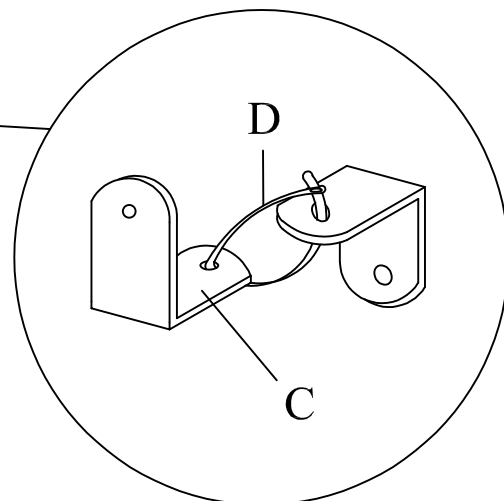
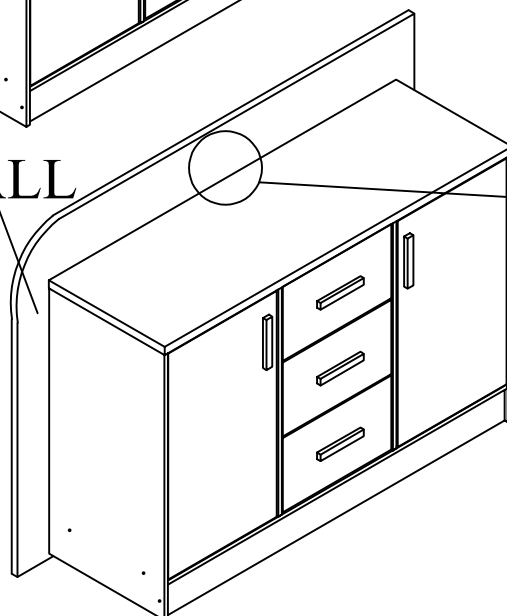
BACK VIEW



WALL



WALL



RETURN / DAMAGE CLAIM INSTRUCTIONS

1. DO NOT discard of the box / original packaging.

In case a return is required, the item must be returned in original box. Without this your return will not be accepted.

2. Take a photo of the box markings.

A photo of the markings (text) on the box is required in case a part is needed for replacement. This helps our staff identify your product number to ensure you receive the correct parts.

3. Take a photo / Video of Damage (if applicable).

A photo /Video of the damage is always required to file a claim and get your replacement or refund processed quickly. Please make sure you have the box even if it is damaged.

4. Send us an email with the images requested.

Email us directly with the attached images, order number (SOXXXX) and a description of your claim.

Auckland / Waikato / BOP Branch: sales@tsbliving.co.nz

Christchurch Branch: customersupport@tsbliving.co.nz

Wellington Branch: wellington@tsbliving.co.nz