


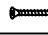





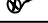


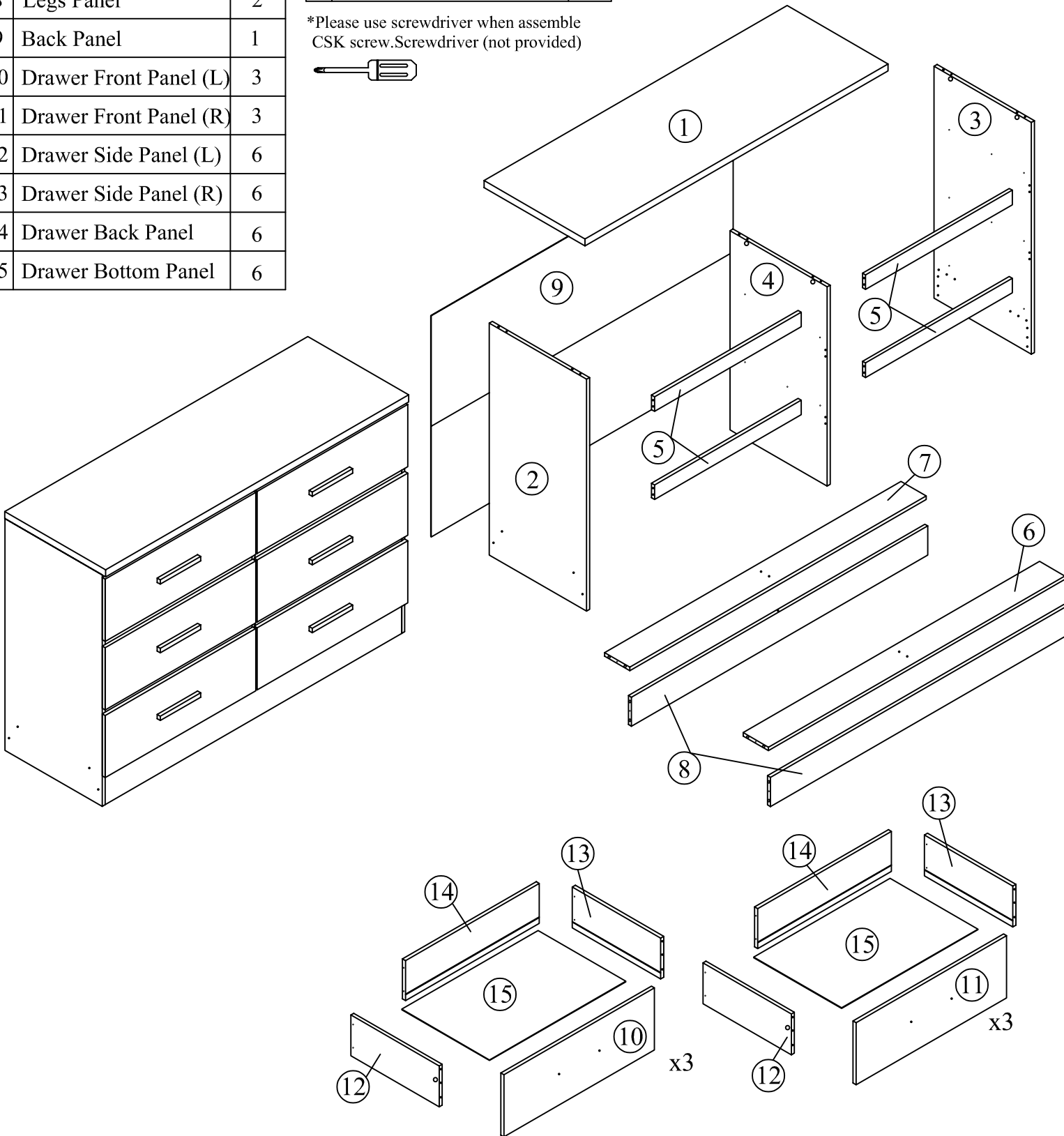
# Assembly Instructions

Model : DR 8006-C

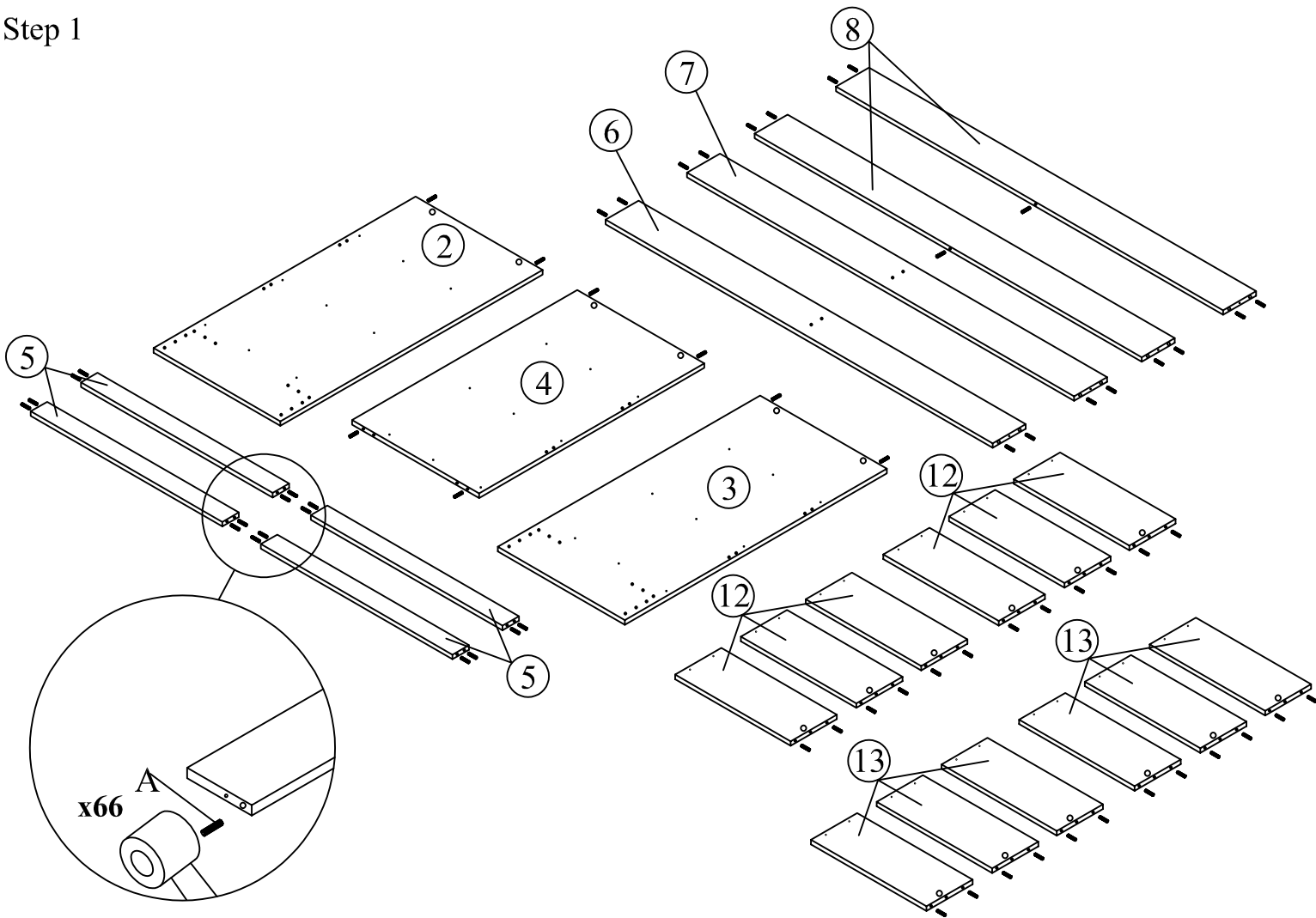
Part List		QTY
1	Top Panel	1
2	Left Side Panel	1
3	Right Side Panel	1
4	Center Panel	1
5	Support Panels	4
6	Leg Support Panel	1
7	Back Support Panel	1
8	Legs Panel	2
9	Back Panel	1
10	Drawer Front Panel (L)	3
11	Drawer Front Panel (R)	3
12	Drawer Side Panel (L)	6
13	Drawer Side Panel (R)	6
14	Drawer Back Panel	6
15	Drawer Bottom Panel	6

Hardware		QTY
A	Wood Dowel 6 x 30mm 	66
B	Mini Fix Bolt 	18
C	Mini Fix Housing 	18
D	CSK Screw M4x38mm 	34
E	CSK Screw M3.5x12mm 	72
F	14" Drawer Slide 	6
G	Nail 	40
H	White Nail Leg 	4
I	Handle 	6
J	CSK Screw M4x20mm 	12

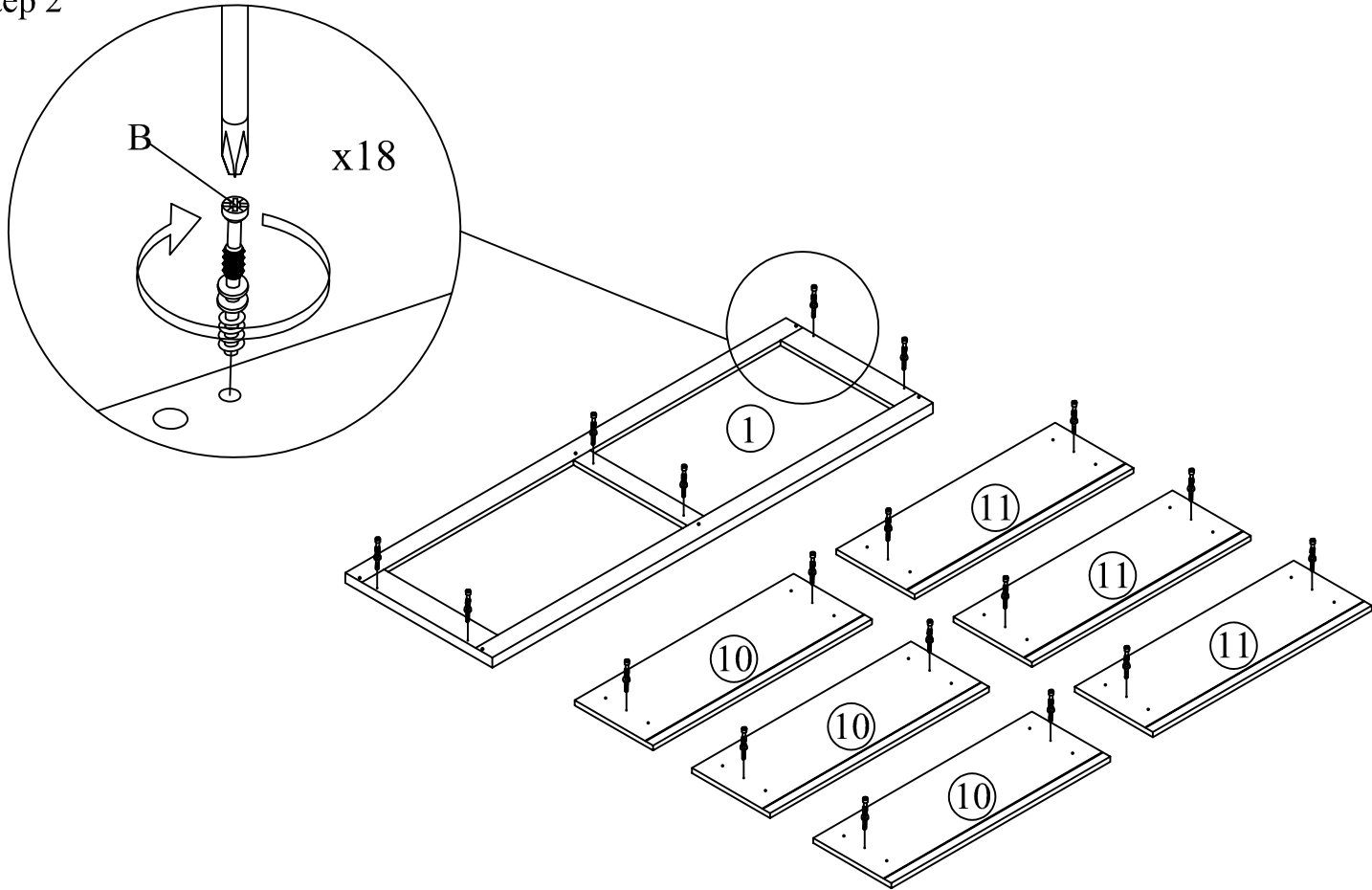
\*Please use screwdriver when assemble CSK screw.Screwdriver (not provided)



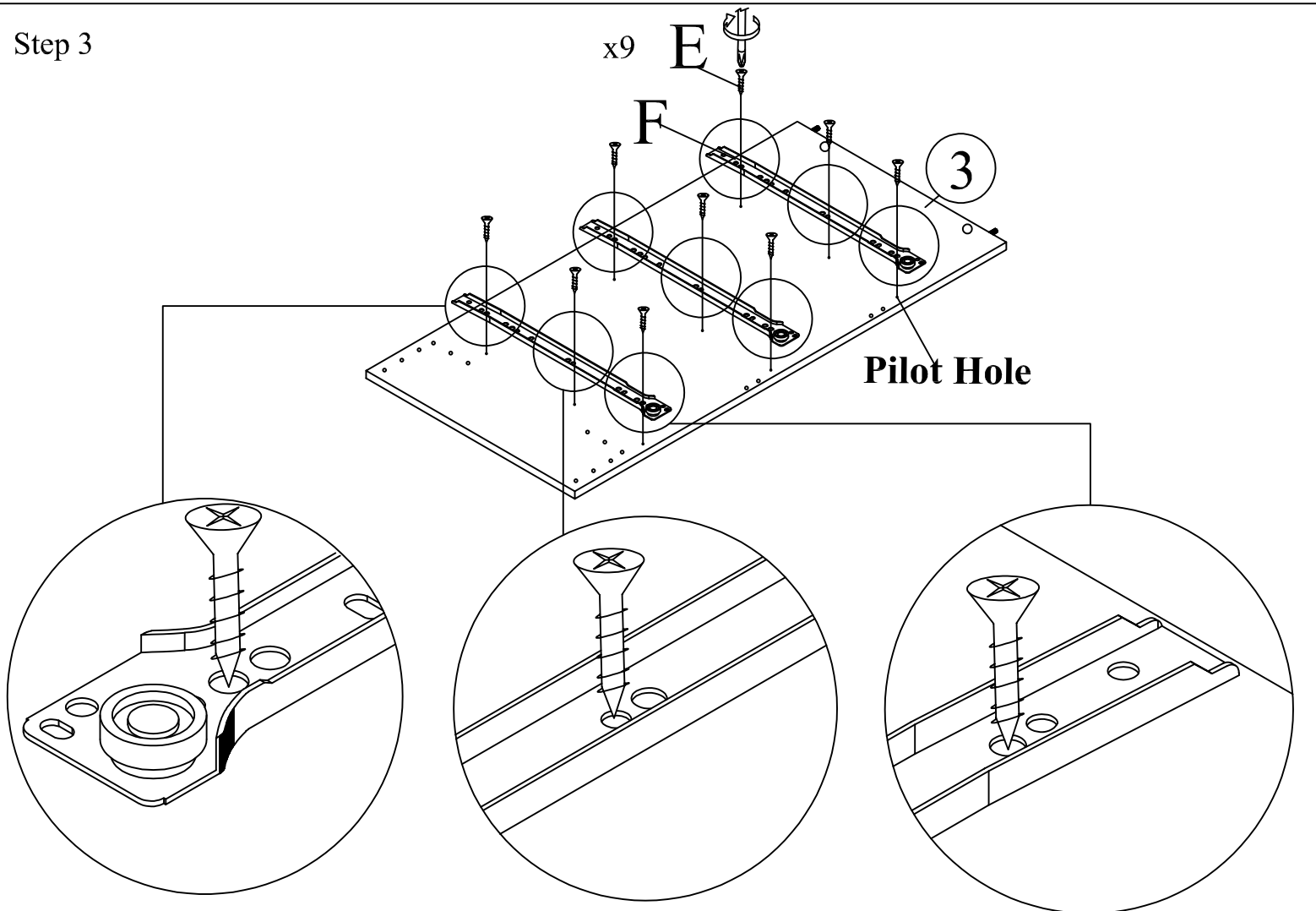
Step 1



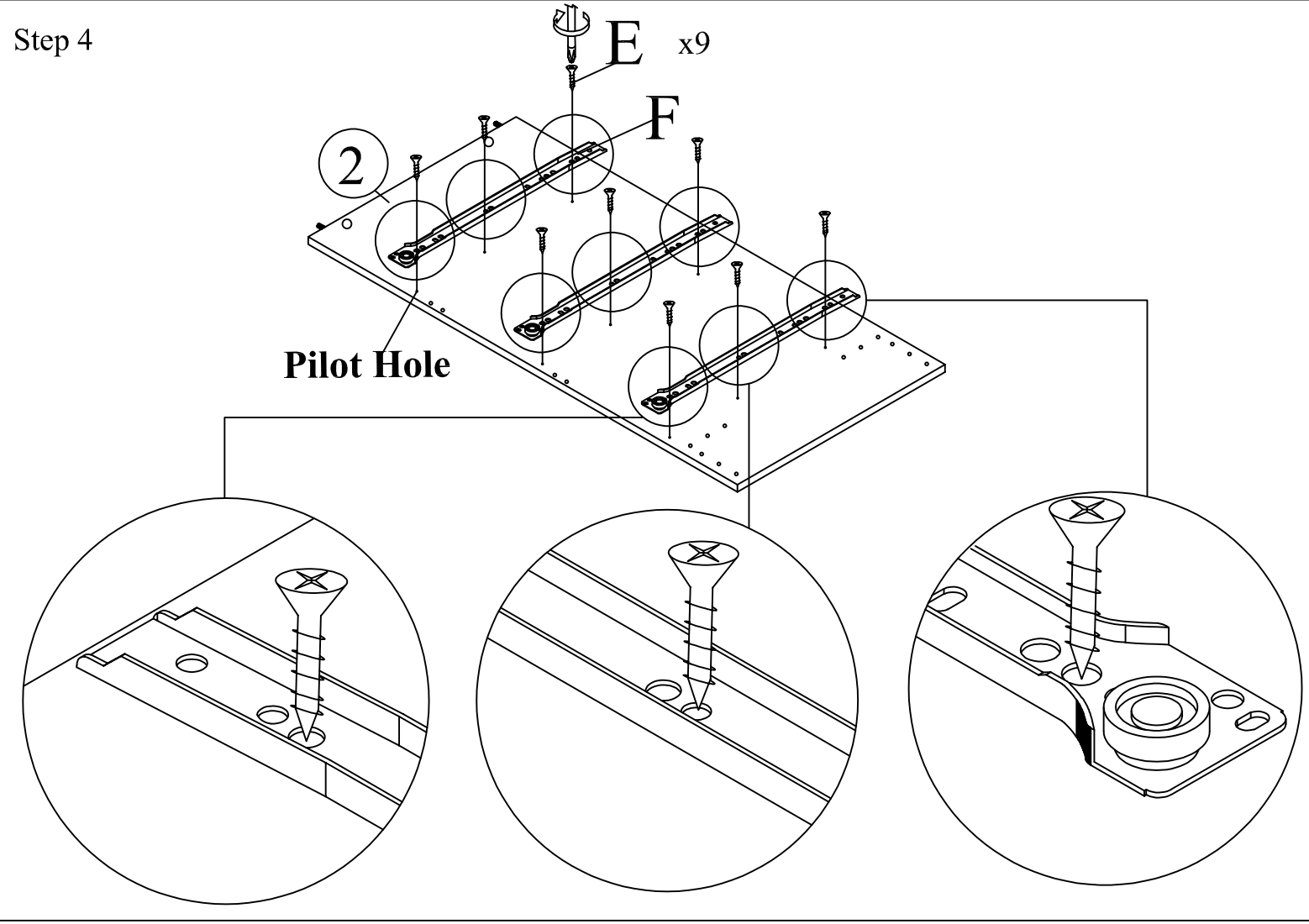
Step 2



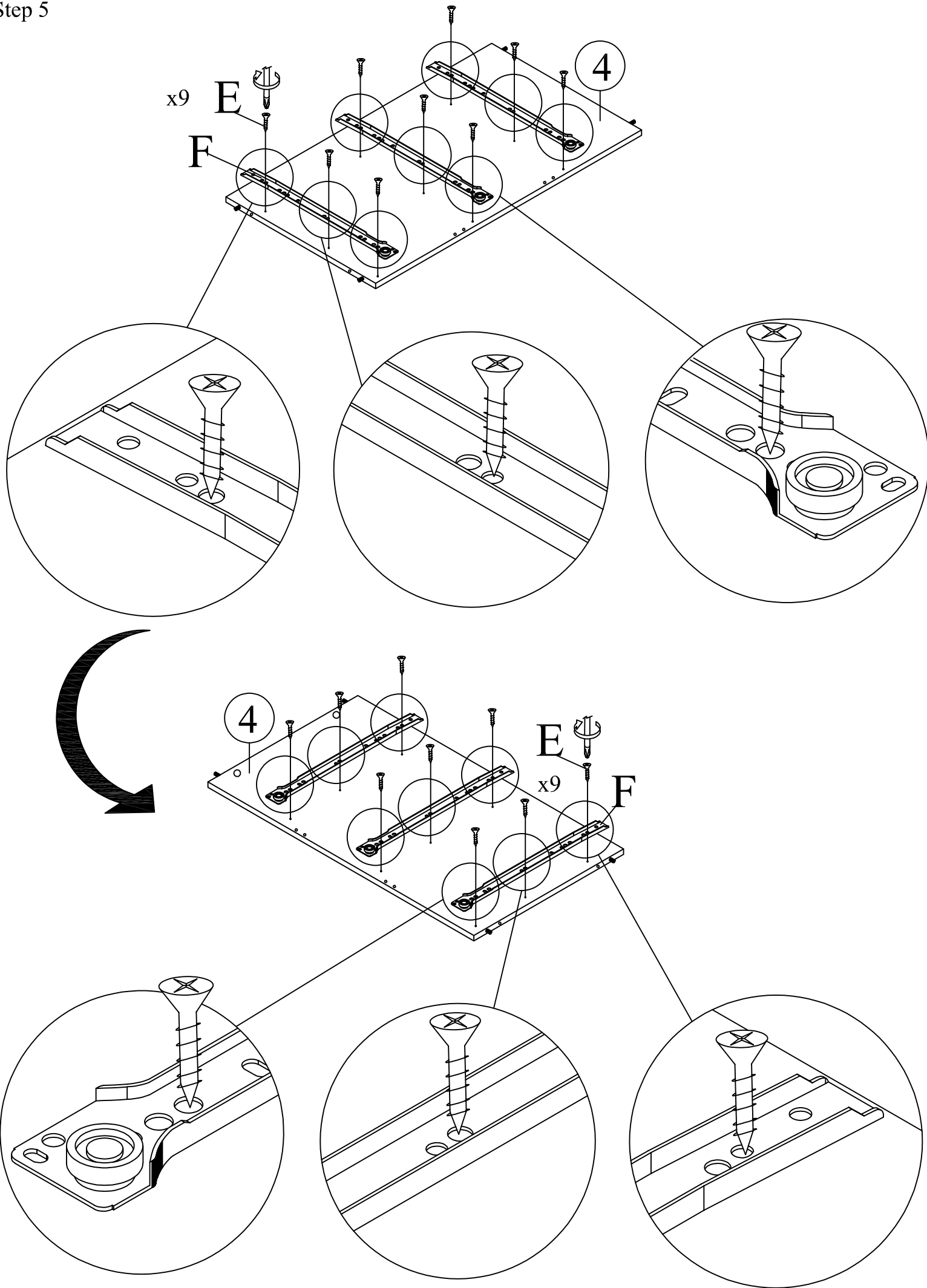
Step 3



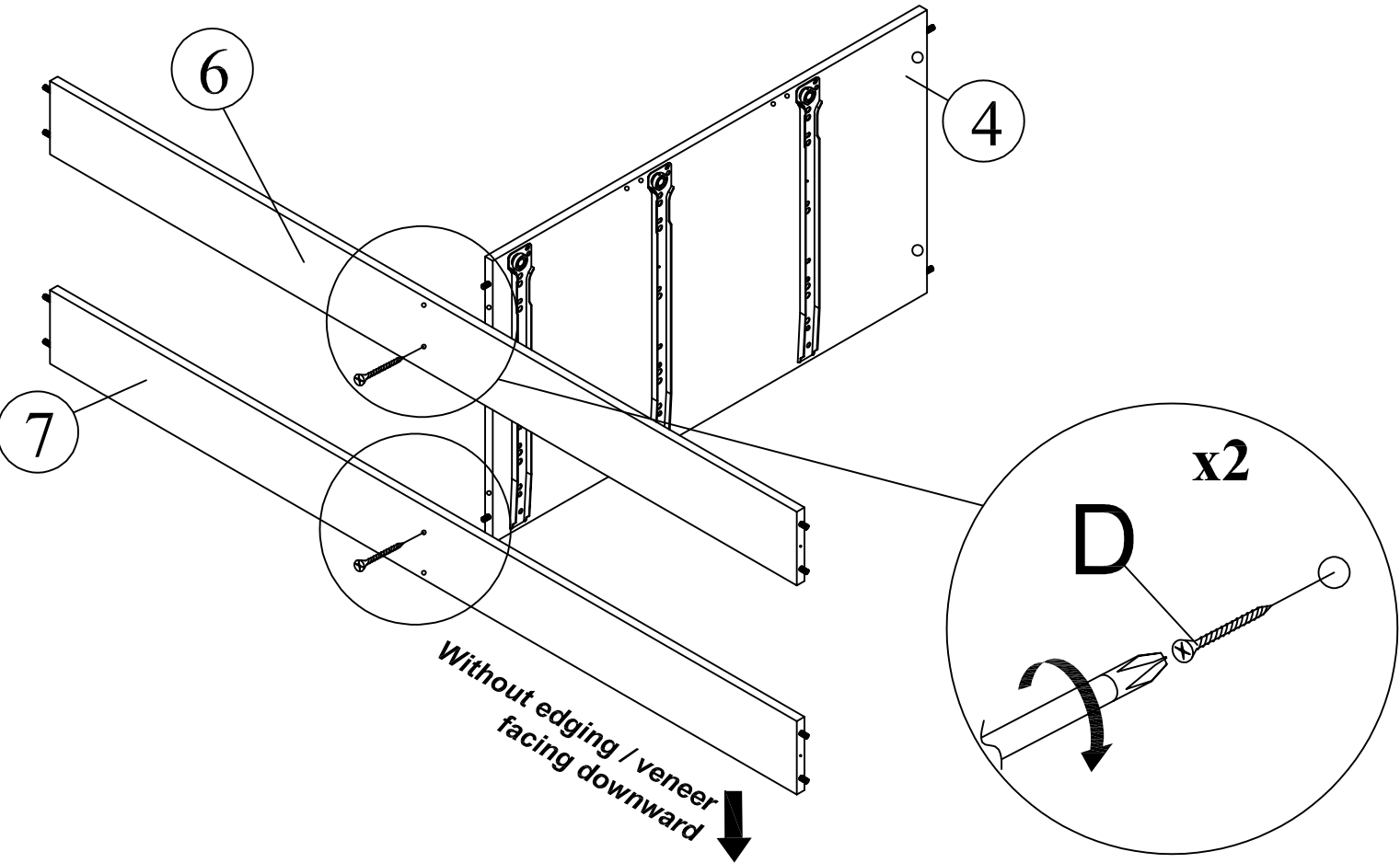
Step 4



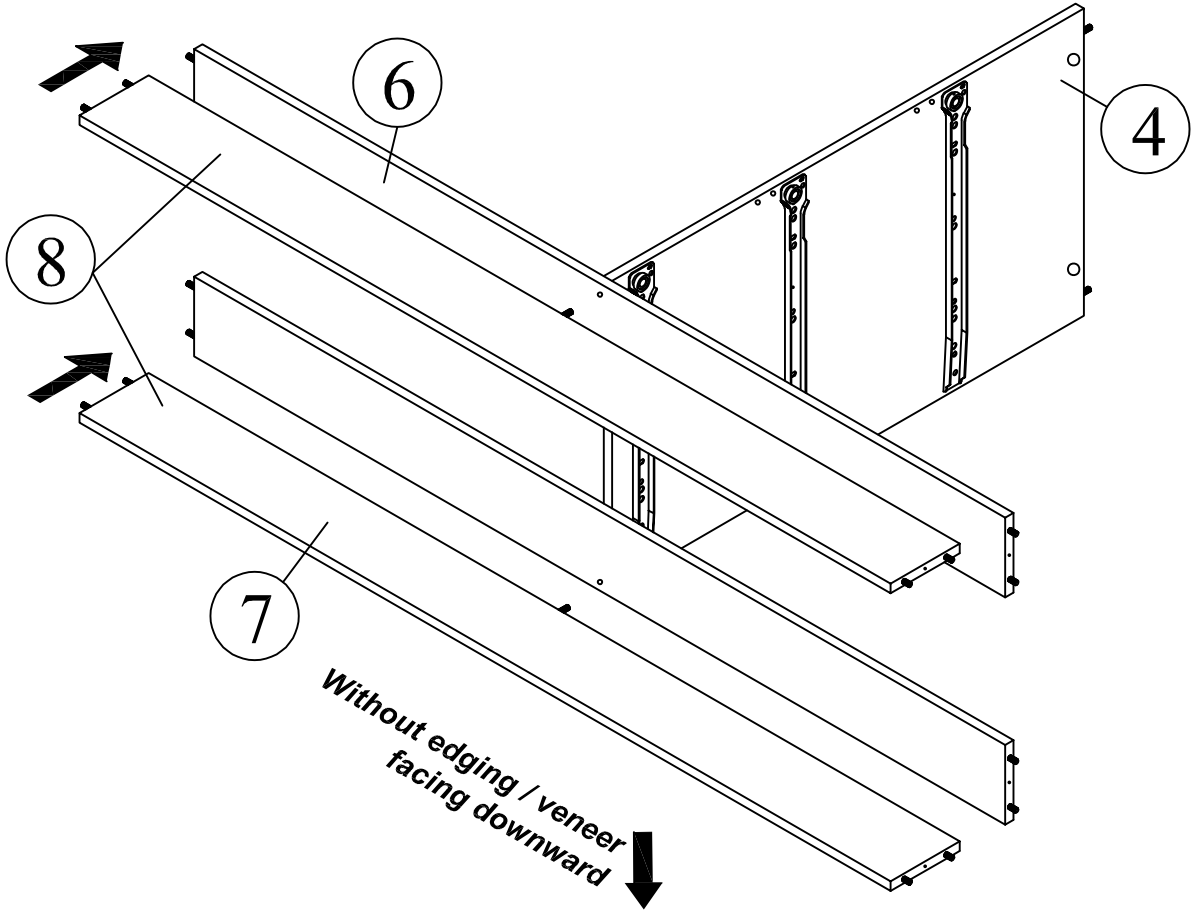
Step 5



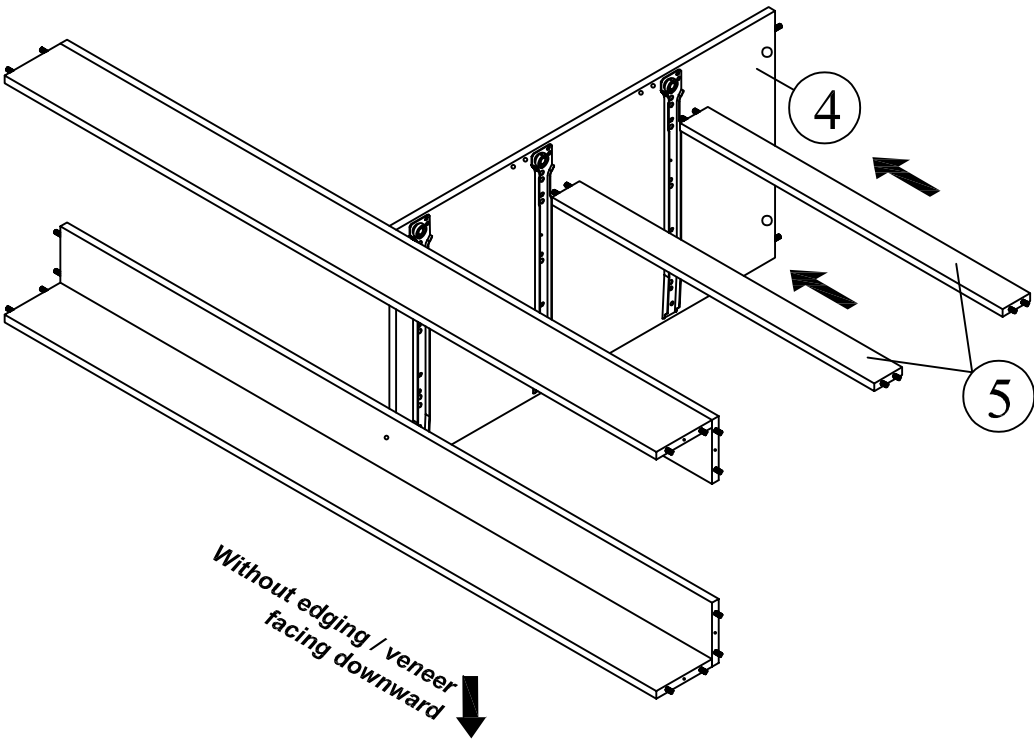
Step 6



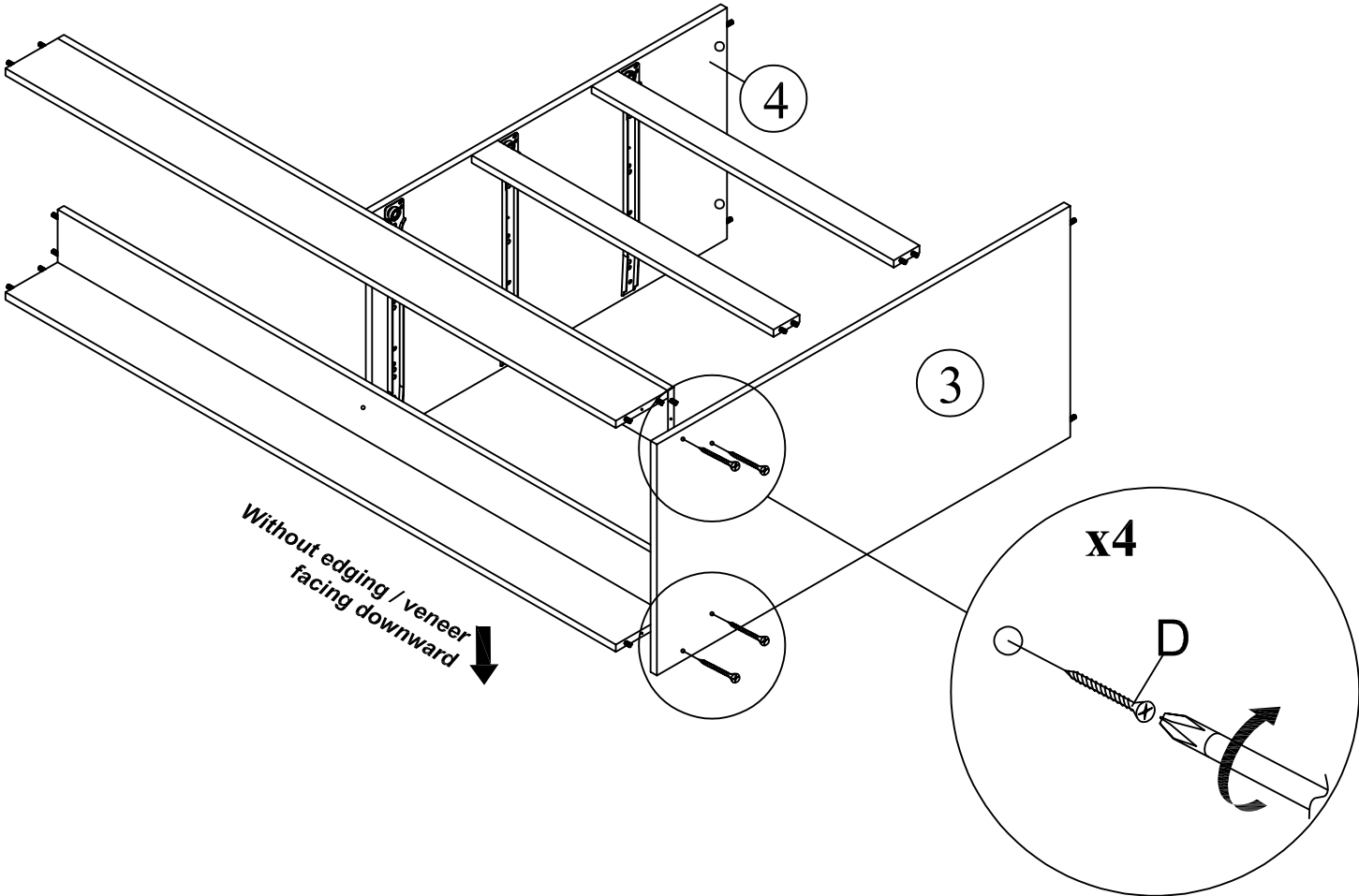
Step 7



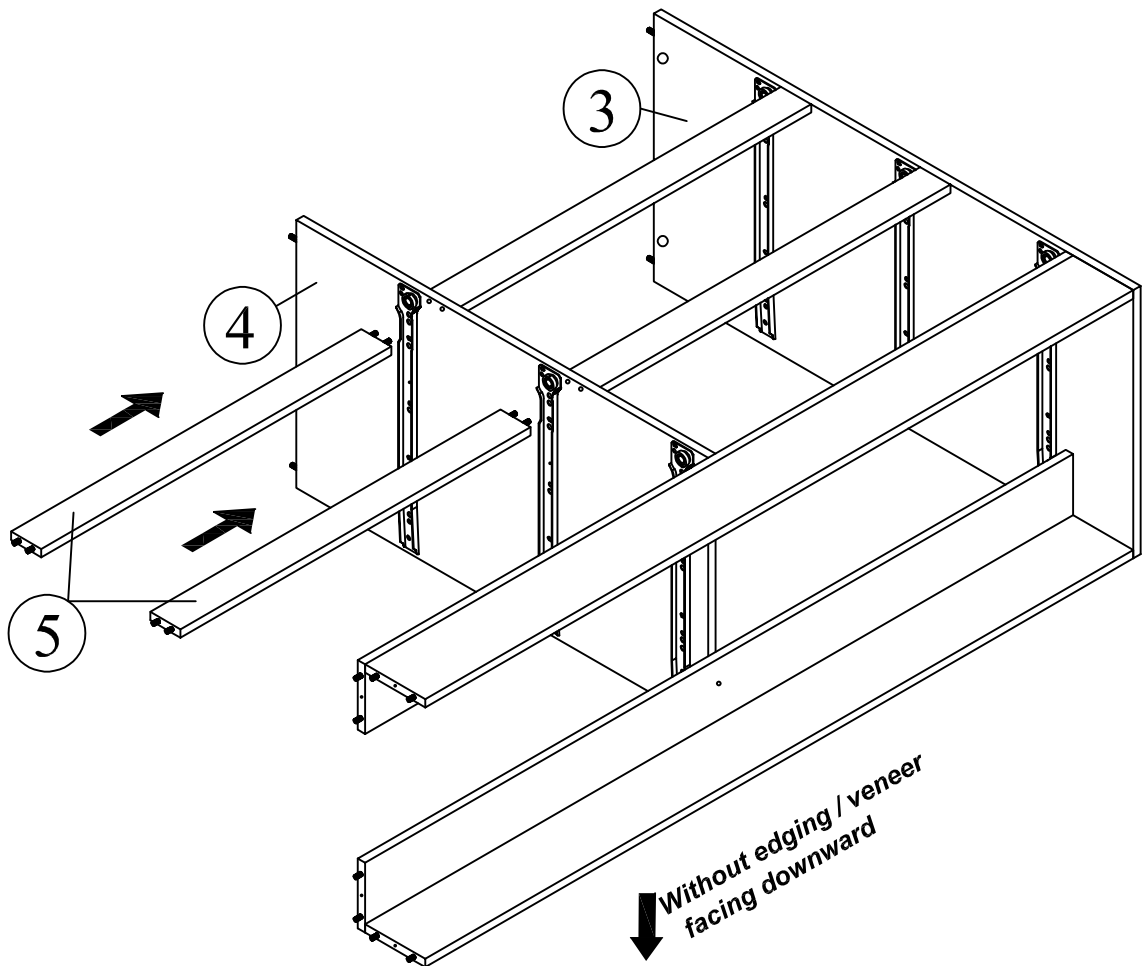
Step 8



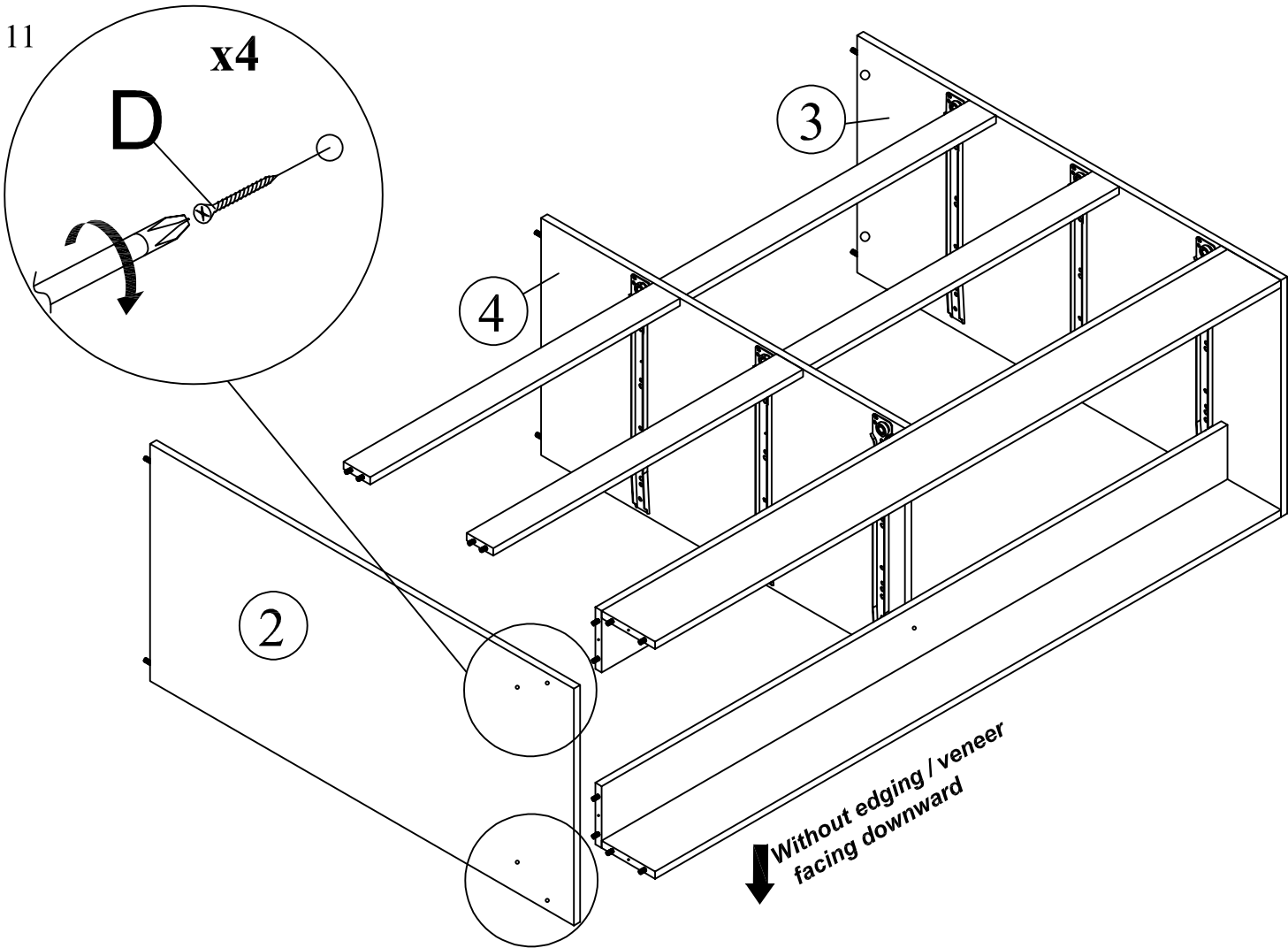
Step 9



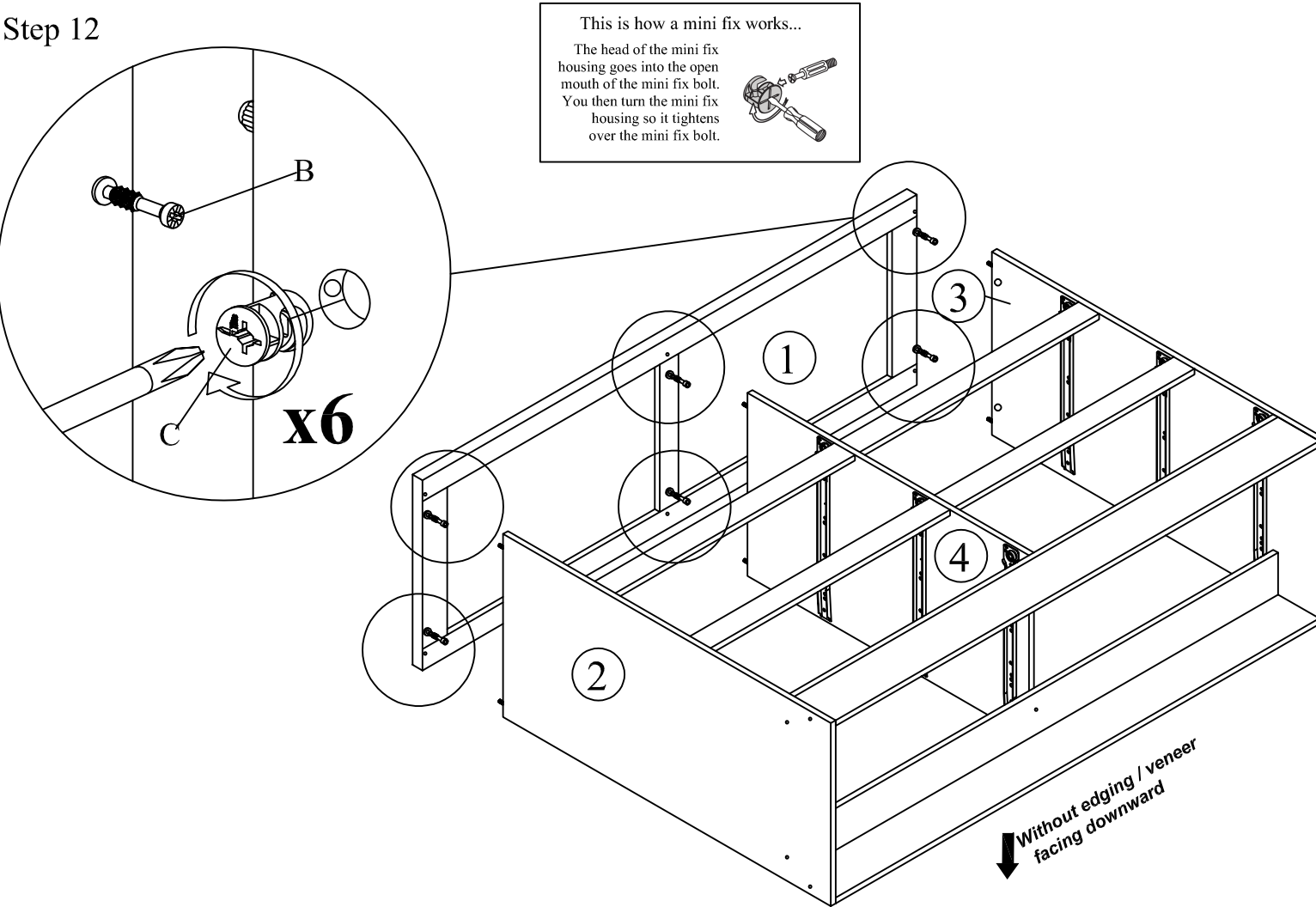
Step 10



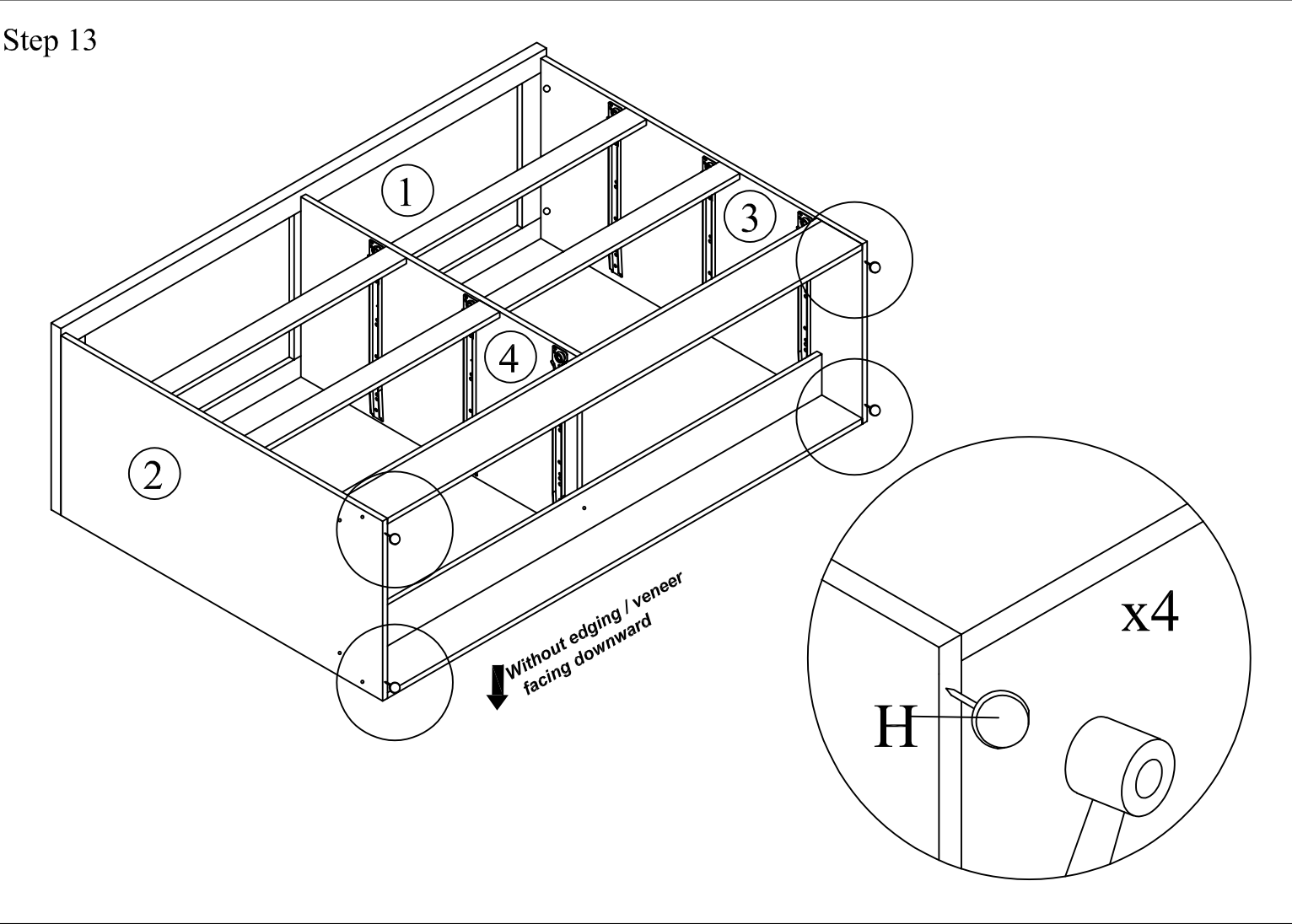
Step 11



Step 12



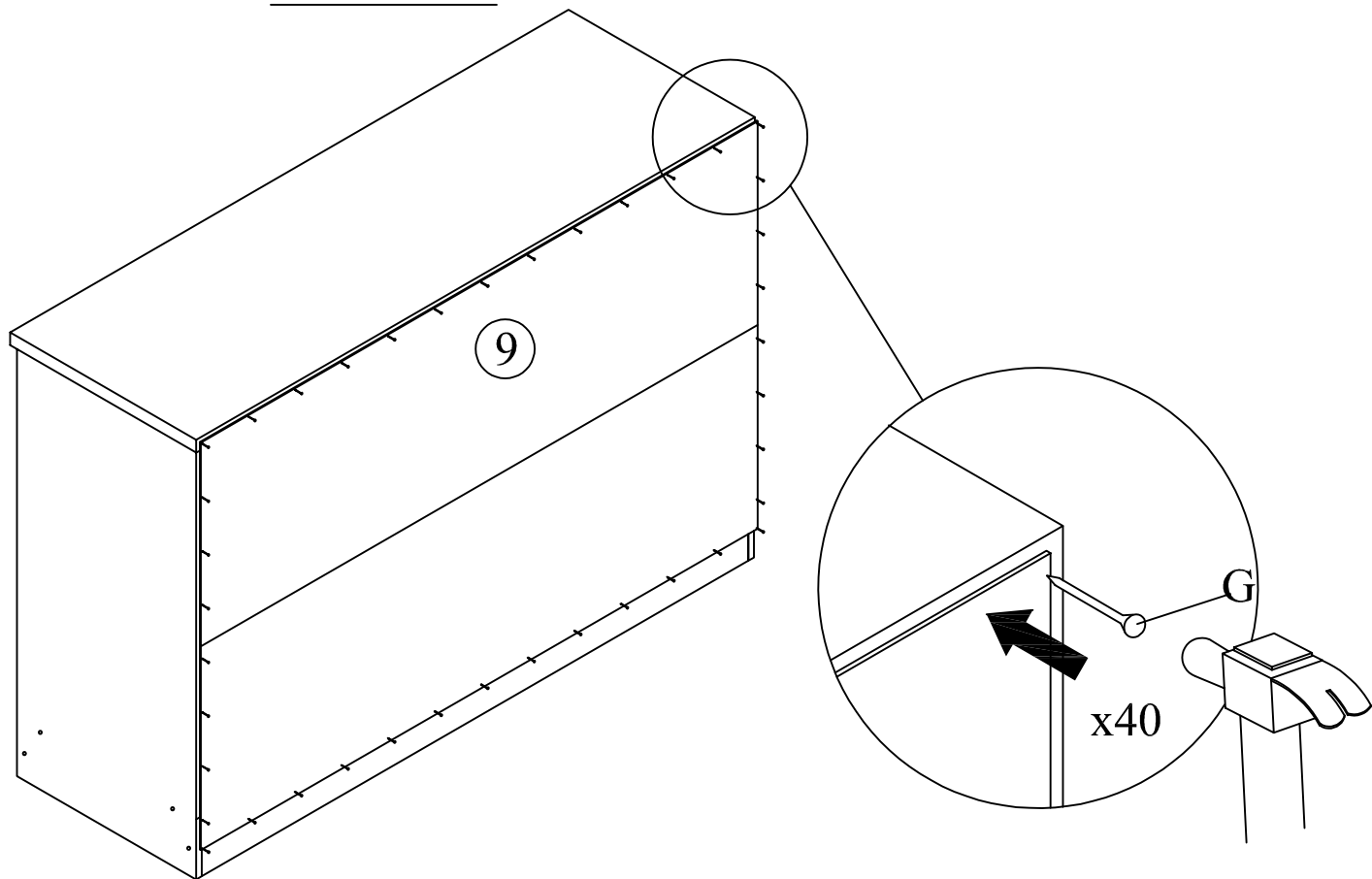
Step 13





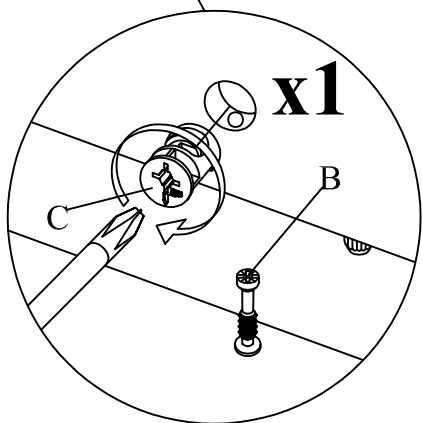
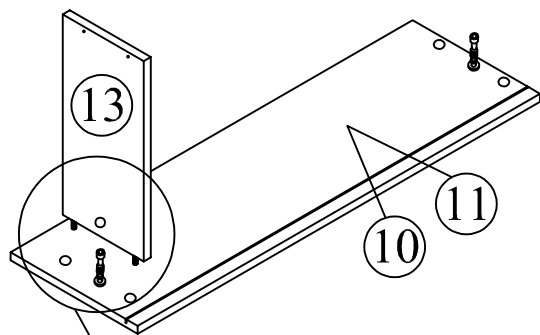
Step 14

BACK VIEW



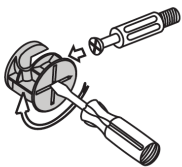
Step 15

Step 15.1



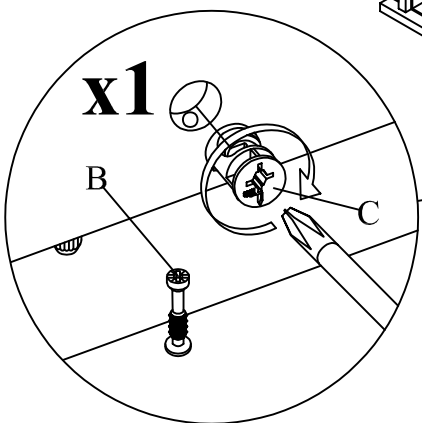
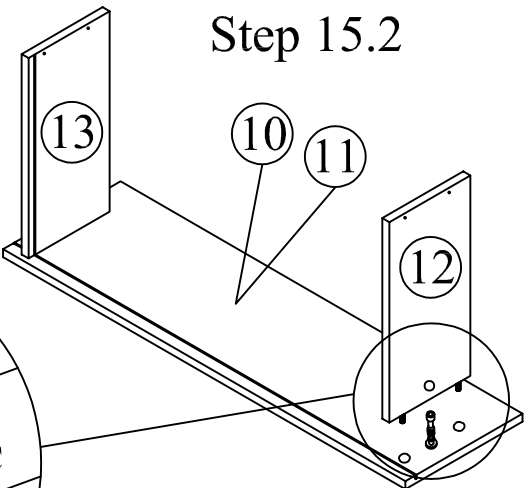
This is how a mini fix works...

The head of the mini fix housing goes into the open mouth of the mini fix bolt. You then turn the mini fix housing so it tightens over the mini fix bolt.



**x6**

Step 15.2

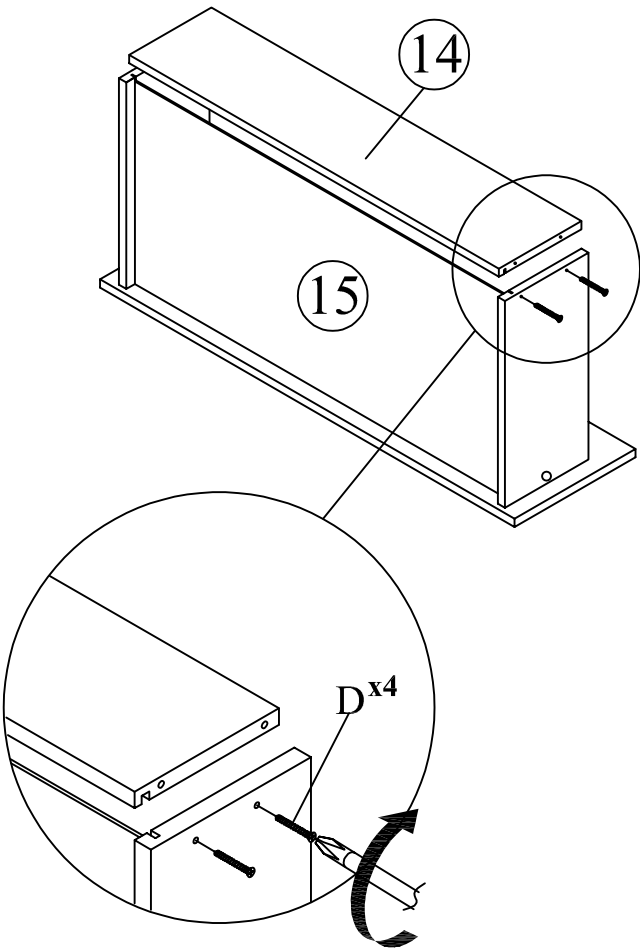
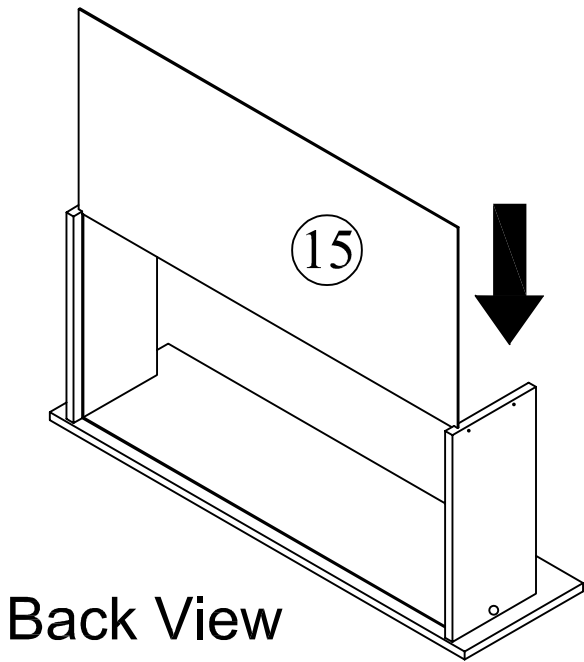


Step 16

Step 16.1

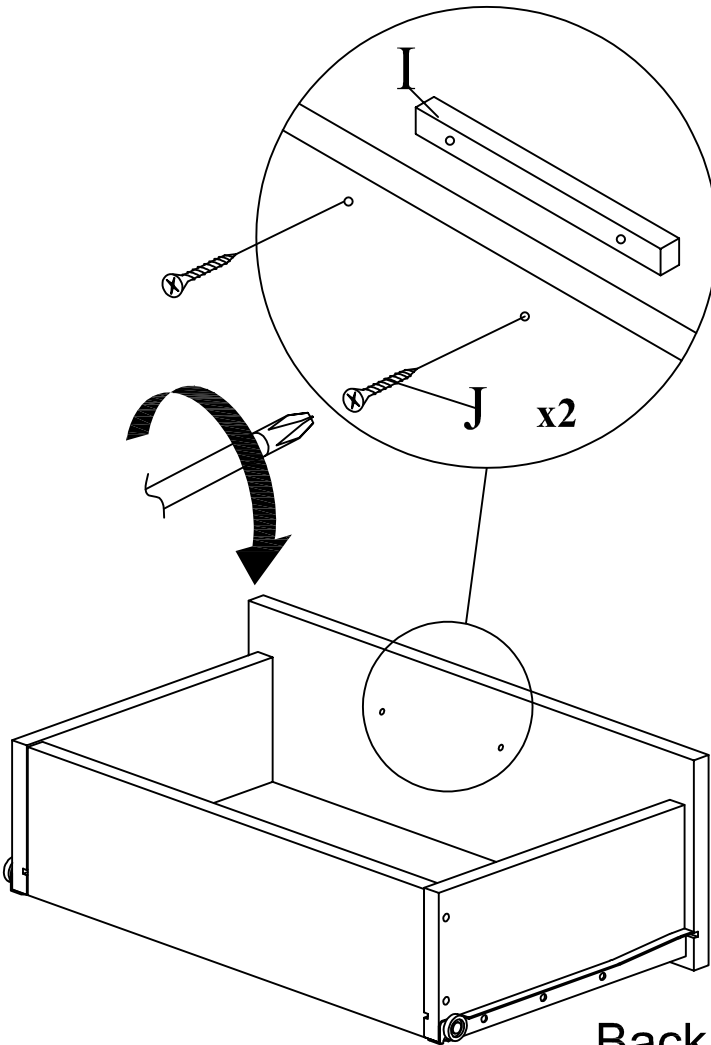
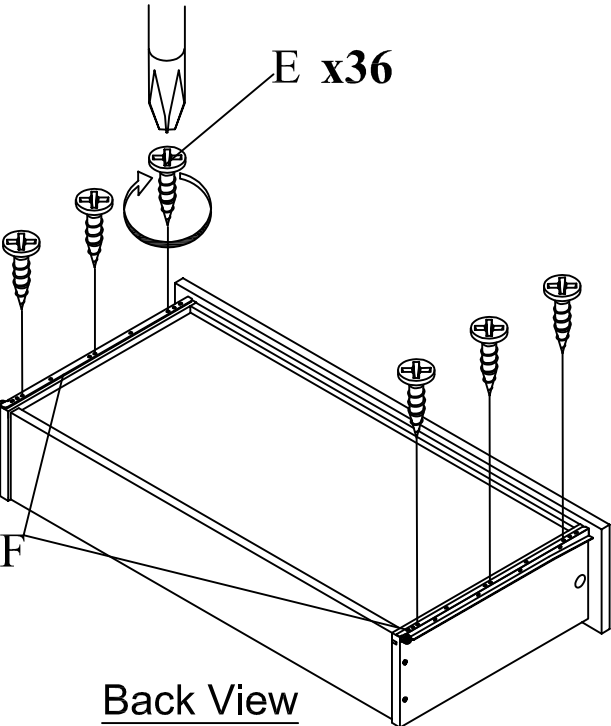
Step 16.2

x6



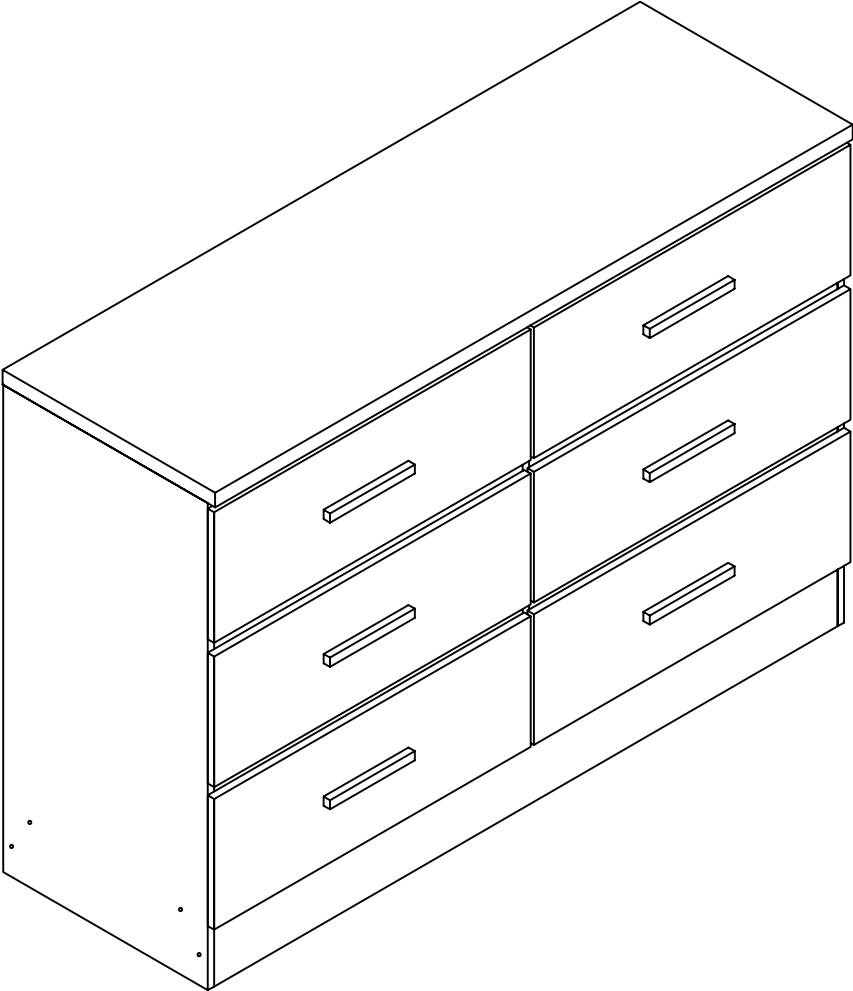
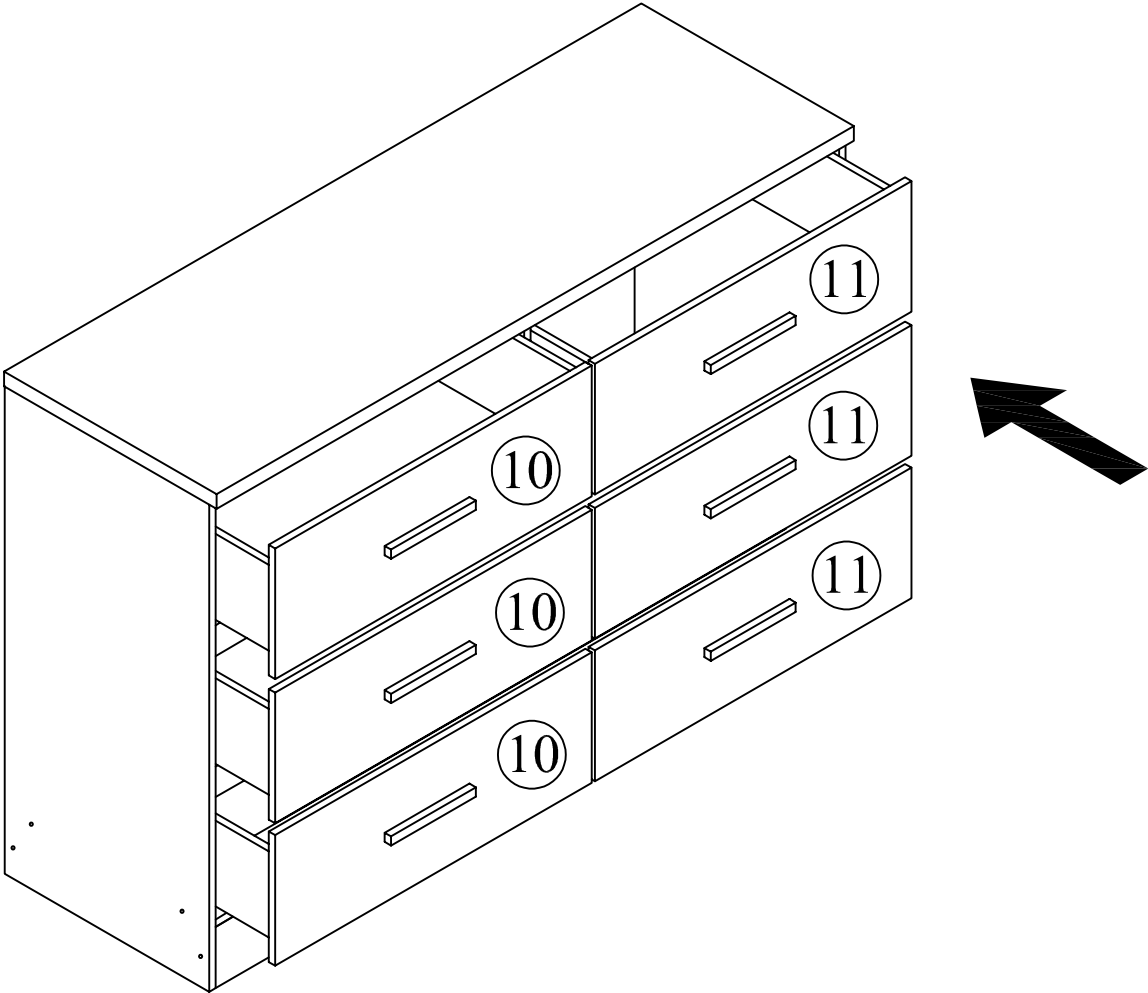
Step 17

x6



Back View

Step 18



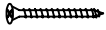
Anti -  
Tipping

(A)



CSK Screw  
M3.5x16mm  
1PC

(B)



CSK Screw  
M4x50mm  
1PC

(C)

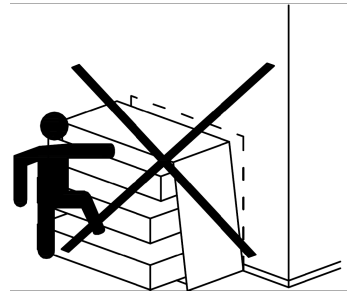
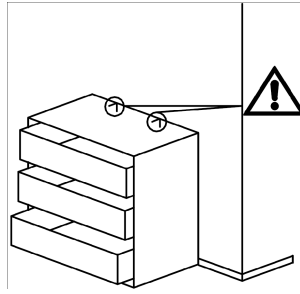


L BRACKET  
2PCS

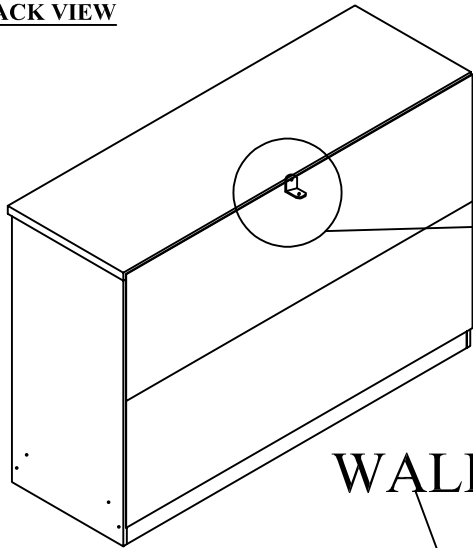
(D)



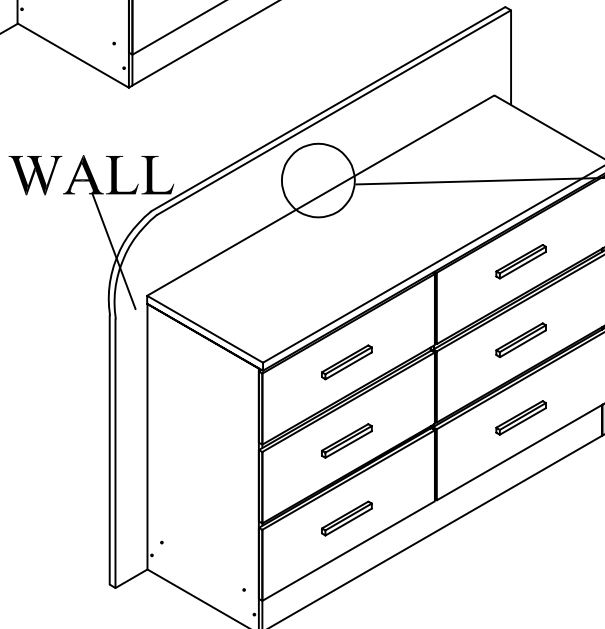
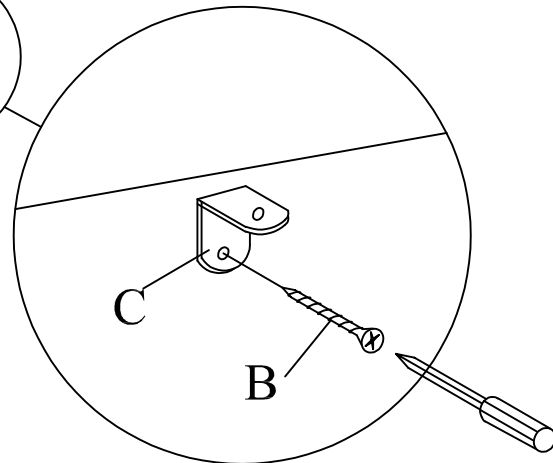
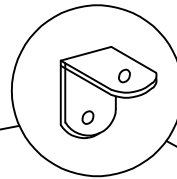
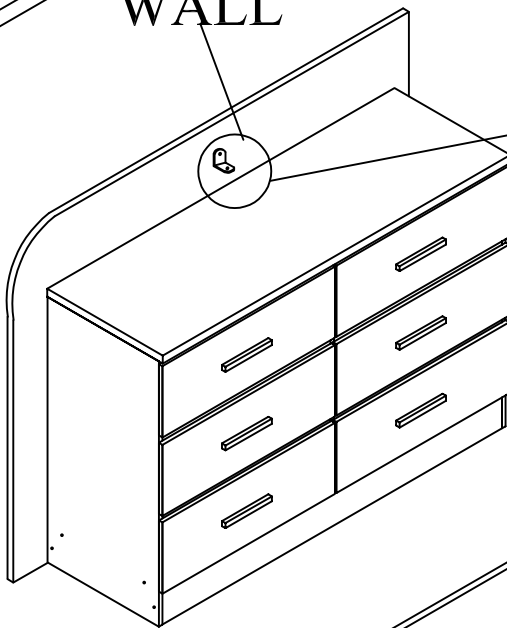
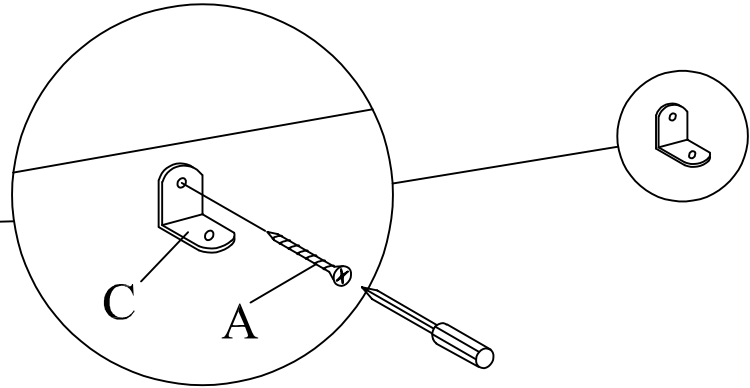
CABLE TIE  
1PC



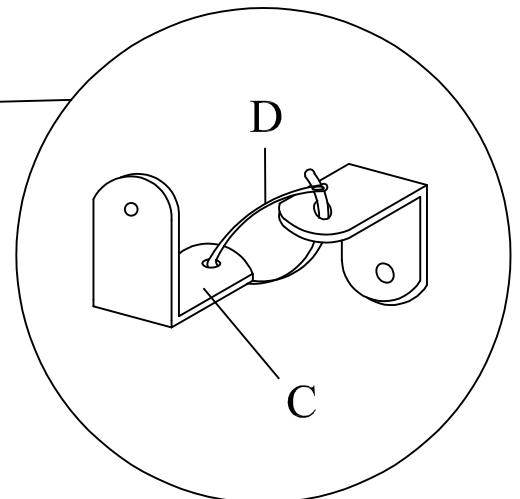
BACK VIEW



WALL



WALL



# **RETURN / DAMAGE CLAIM INSTRUCTIONS**

## **1. DO NOT** discard of the box / original packaging.

In case a return is required, the item must be returned in original box. Without this your return will not be accepted.

## **2. Take a photo of the box markings.**

A photo of the markings (text) on the box is required in case a part is needed for replacement. This helps our staff identify your product number to ensure you receive the correct parts.

## **3. Take a photo / Video of Damage (if applicable).**

A photo /Video of the damage is always required to file a claim and get your replacement or refund processed quickly. Please make sure you have the box even if it is damaged.

## **4. Send us an email with the images requested.**

Email us directly with the attached images, order number (SOXXXX) and a description of your claim.

Auckland / Waikato / BOP Branch: [sales@tsbliving.co.nz](mailto:sales@tsbliving.co.nz)

Christchurch Branch: [customersupport@tsbliving.co.nz](mailto:customersupport@tsbliving.co.nz)

Wellington Branch: [wellington@tsbliving.co.nz](mailto:wellington@tsbliving.co.nz)