

# ASSEMBLY INSTRUCTION

Model: Samuel 1 drawer bedside

## BEFORE YOU START, HERE IS SOME HELPFUL ADVICE

We suggest you spend a short time reading through this leaflet and follow the simple step-by-step assembly instructions. Do not discard any of the packaging until you have checked that you have all the parts and the pack of fittings.

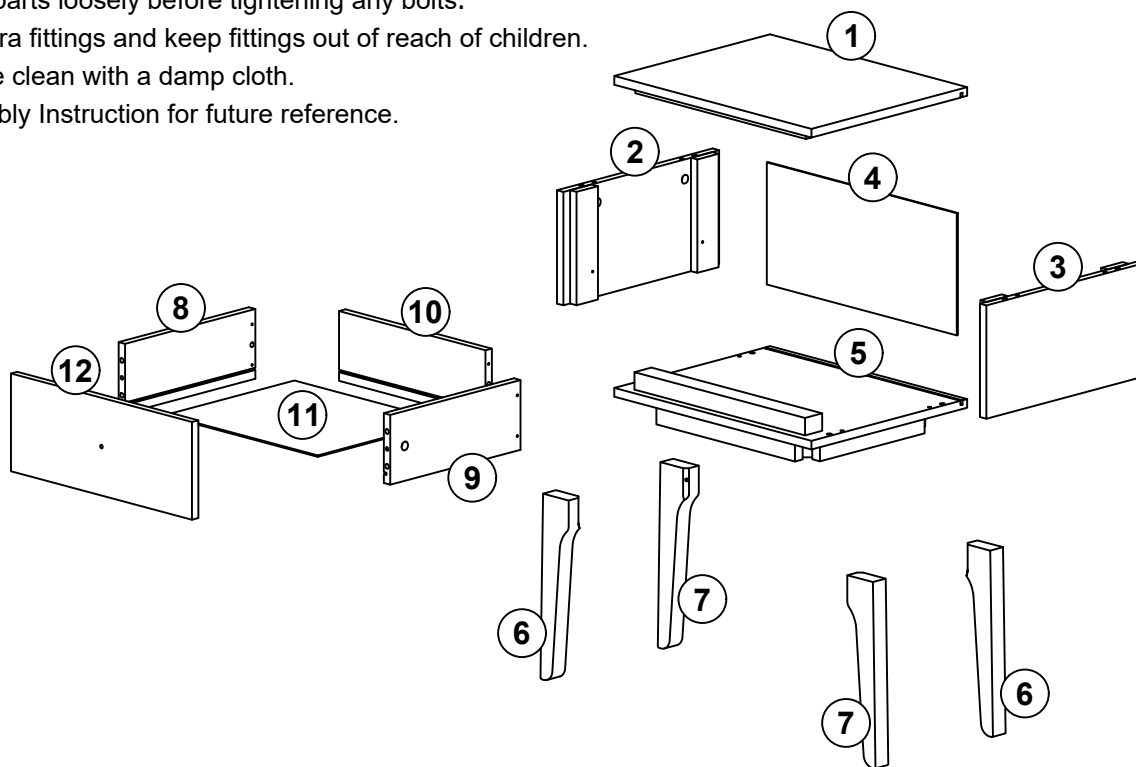
Assemble this product on a flat surface.

Assemble all parts loosely before tightening any bolts.

Discard all extra fittings and keep fittings out of reach of children.

To clean, wipe clean with a damp cloth.

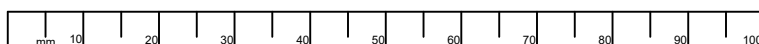
Retain Assembly Instruction for future reference.



## PARTS AND FITTINGS LIST

PARTS LIST		
CODE	DESCRIPTION	QTE.
1	TOP PANEL	1
2	SIDE PANEL (LEFT)	1
3	SIDE PANEL (RIGHT)	1
4	BACK PANEL	1
5	BOTTOM PANEL	1
6	LEG (A)	2
7	LEG (B)	2
8	DRAWER SIDE PANEL (LEFT)	1
9	DRAWER SIDE PANEL (RIGHT)	1
10	DRAWER BACK PANEL	1
11	DRAWER BOTTOM PANEL	1
12	DRAWER FRONT	1

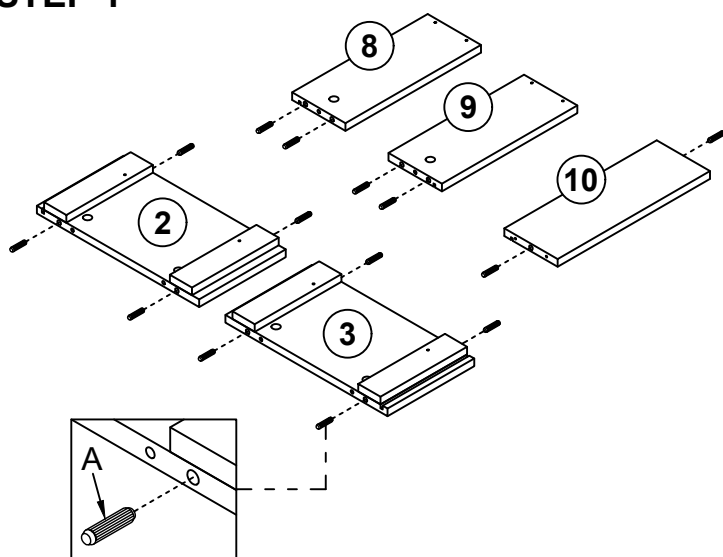
FITTINGS LIST			
CODE		DESCRIPTION	QTE.
A		WOOD DOWEL	14
B		MINIFIX HOUSING	6
C		MINIFIX BOLT	6
D		DRAWER RUNNER	1 SET
E			
F		CSK SCREW M3.5 x 12mm	8
G		CSK SCREW M4 x 38mm	8
H		JCW SCREW M7 x 50mm	4
I		HANDLE SCREW	1
J		KNOB	1
K		ALLEN KEY M4	1
L		SPRING WASHER	4
M		FLAT WASHER	4



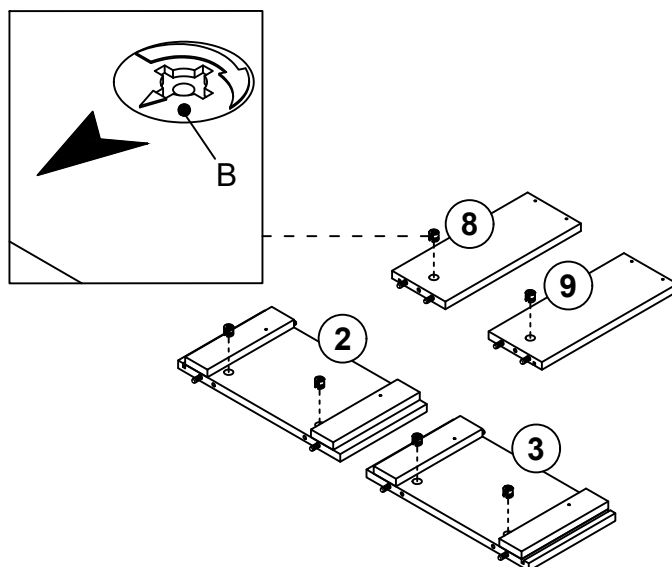
# ASSEMBLY INSTRUCTION

Model: Samuel 1 drawer bedside

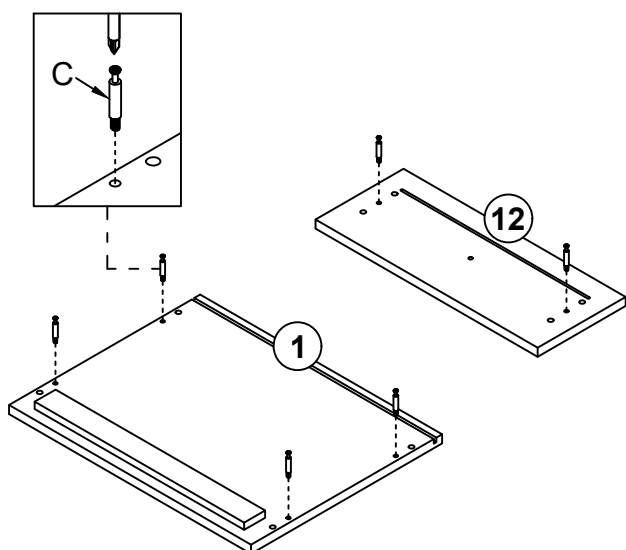
## STEP 1



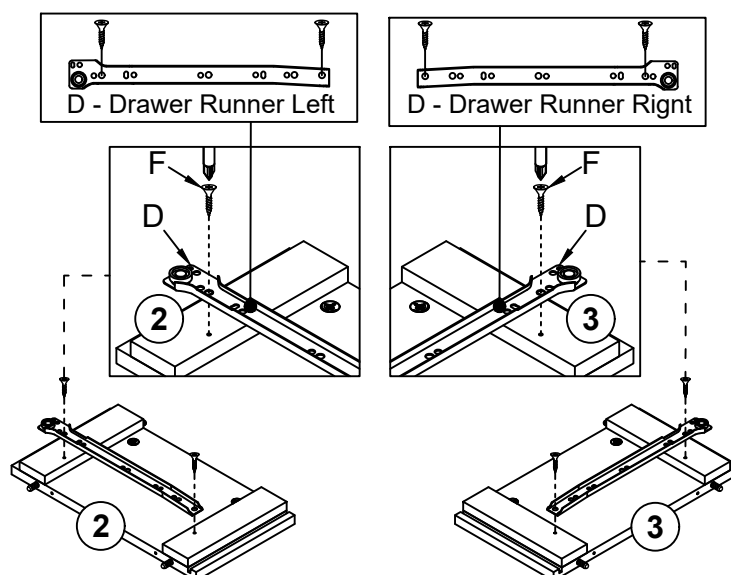
## STEP 2



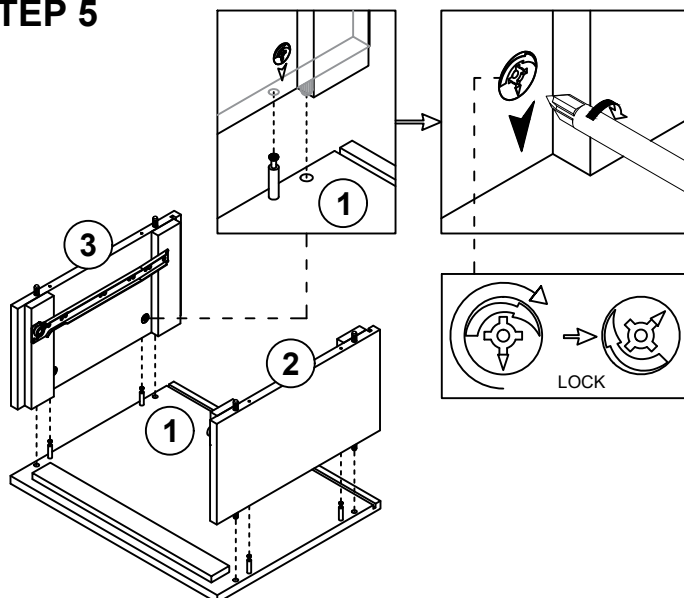
## STEP 3



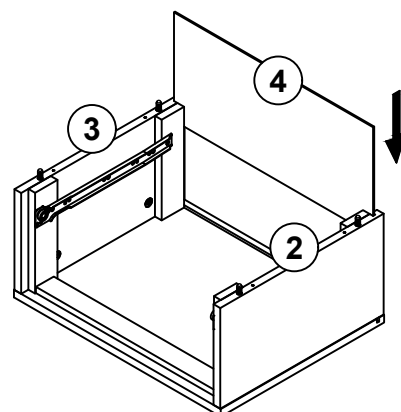
## STEP 4



## STEP 5



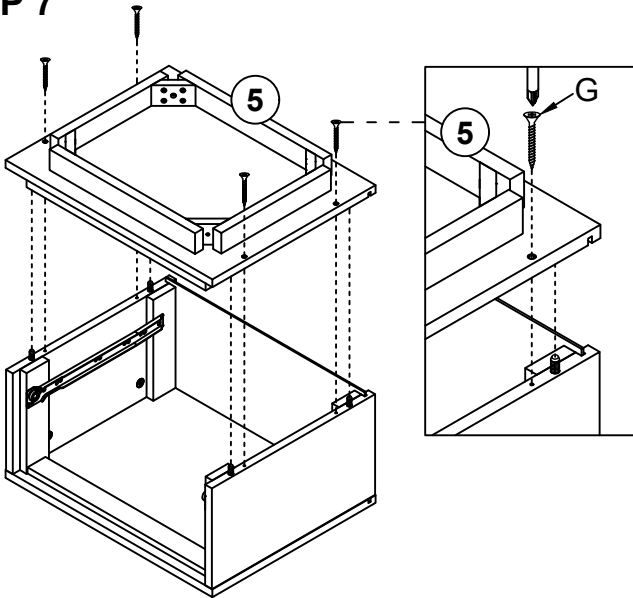
## STEP 6



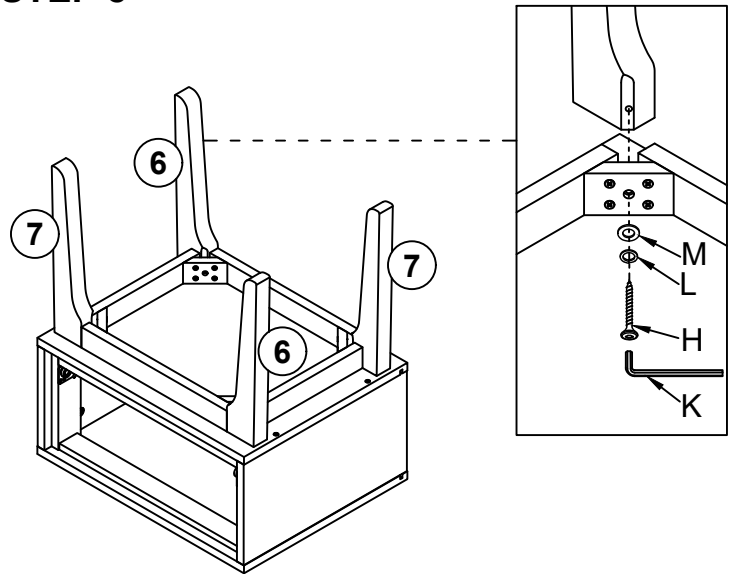
# ASSEMBLY INSTRUCTION

Model: Samuel 1 drawer bedside

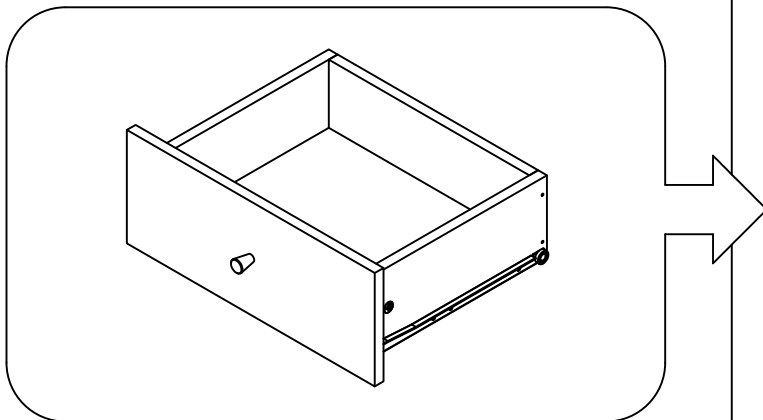
## STEP 7



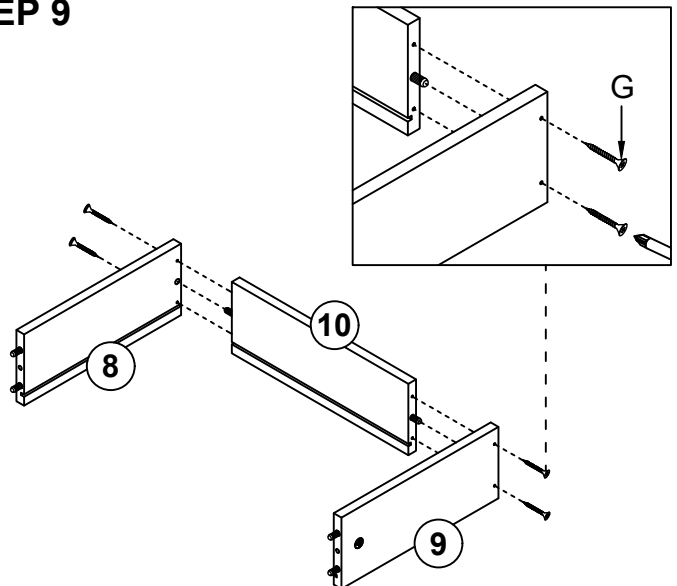
## STEP 8



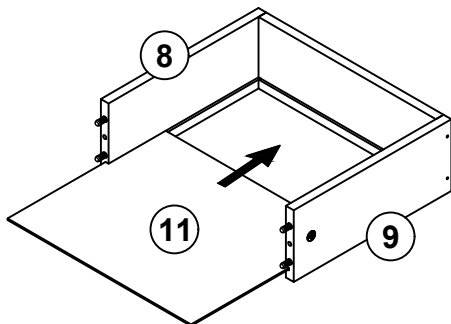
**x1 Set**



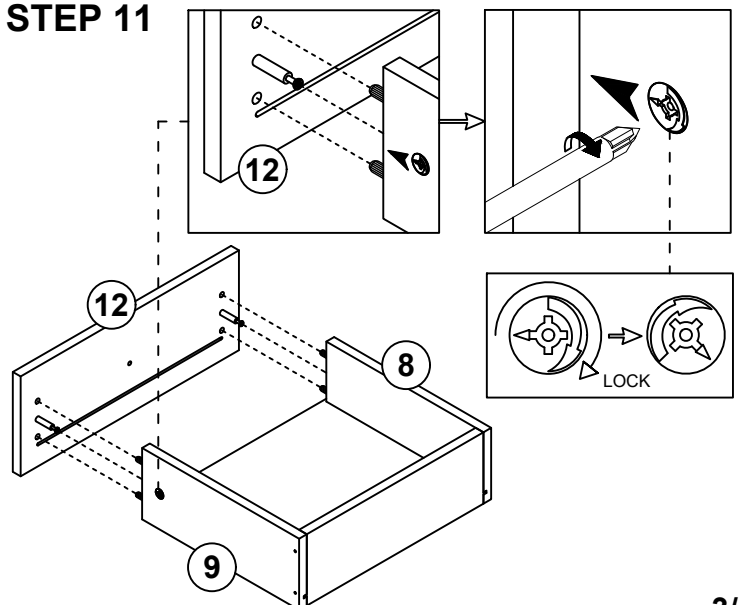
## STEP 9



## STEP 10



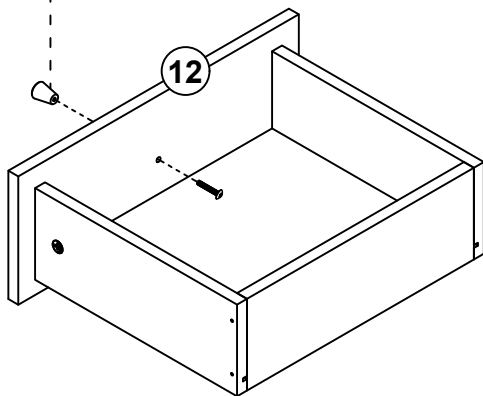
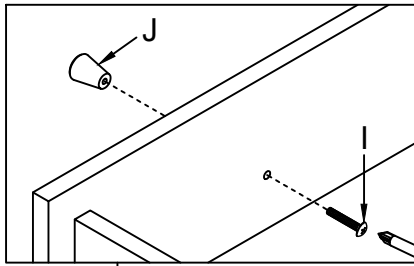
## STEP 11



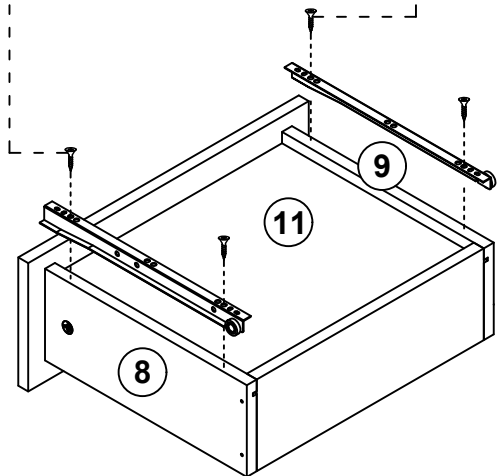
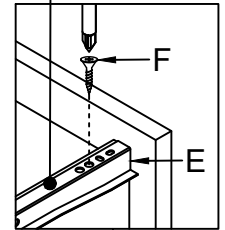
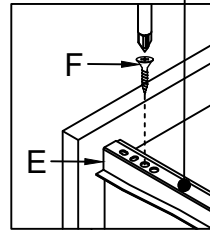
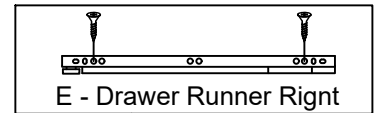
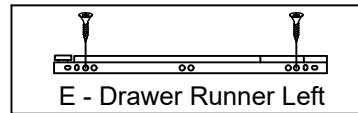
# ASSEMBLY INSTRUCTION

Model: Samuel 1 drawer bedside

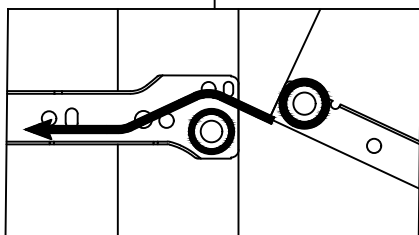
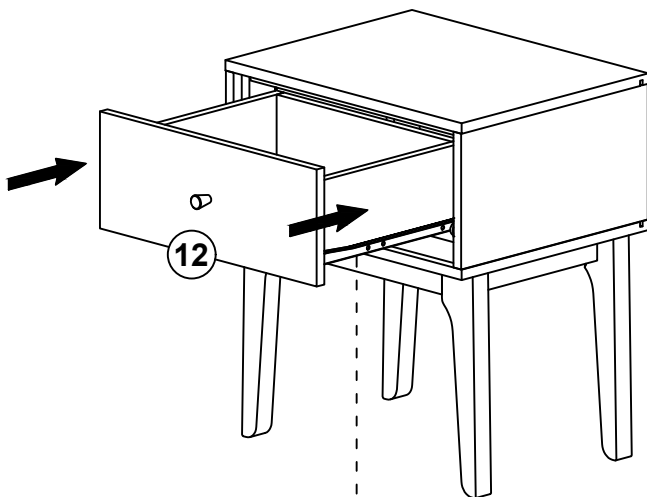
## STEP 12



## STEP 13



## STEP 14



## COMPLETED

