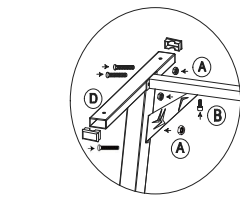
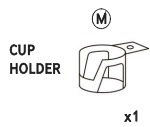
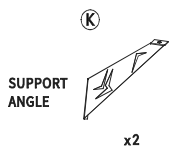
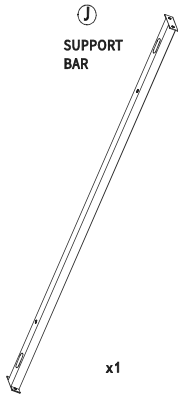
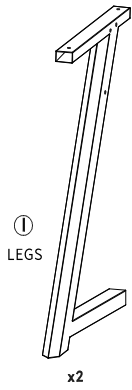
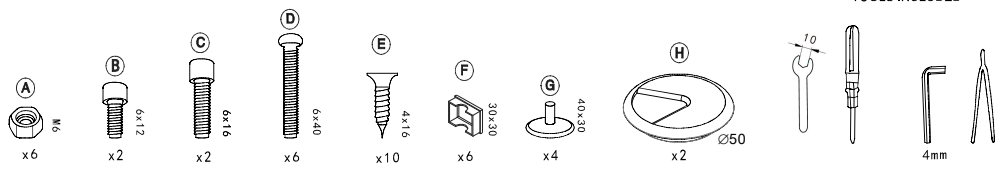
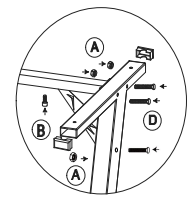
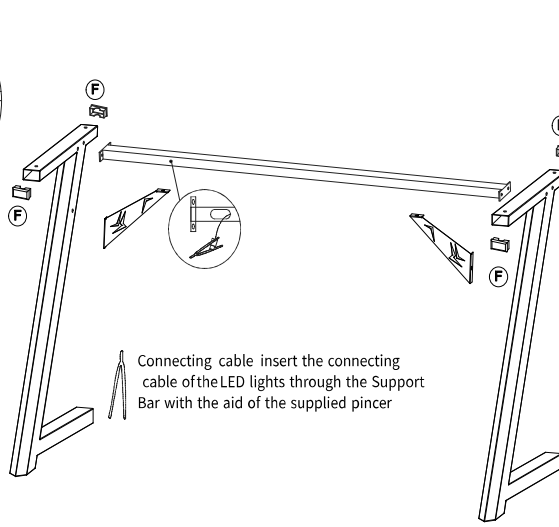
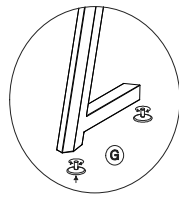


TOOLS INCLUDED



Attach Support Angle onto the Support Bar and Leg. Insert **D** Bolts, as shown. Screw Bolt **B** into Support Angle and Bar. Tighten **D** Bolts with **A** Nuts.



Attach Support Angle onto the Support Bar and Leg. Insert **D** Bolts, as shown. Screw Bolt **B** into Support Angle and Bar. Tighten **D** Bolts with **A** Nuts.

