

# ASSEMBLY INSTRUCTIONS



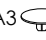

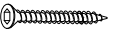

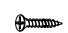

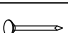
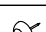

PAGE: 1/4

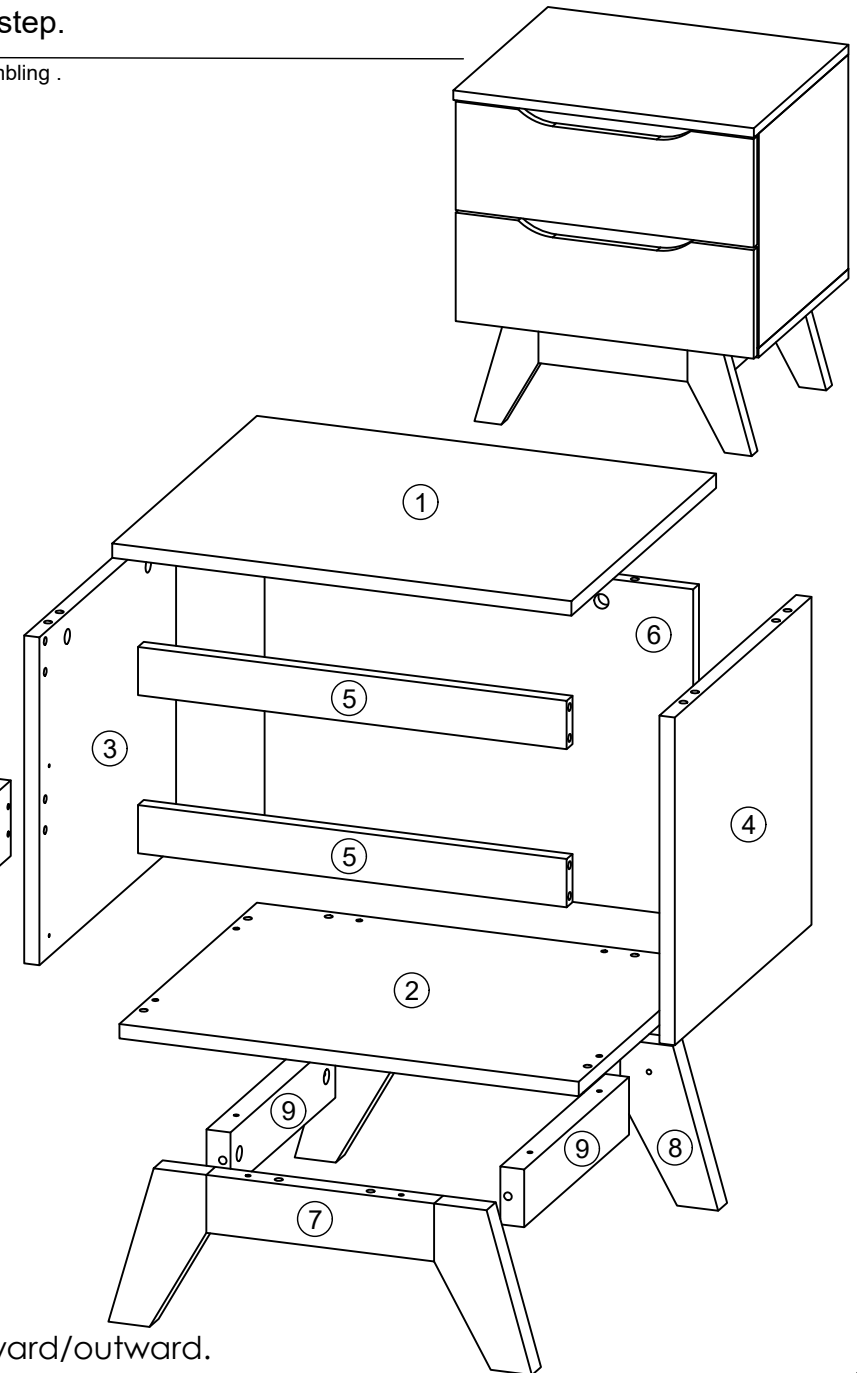
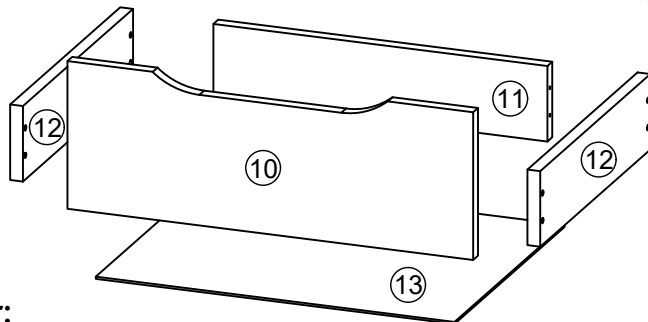
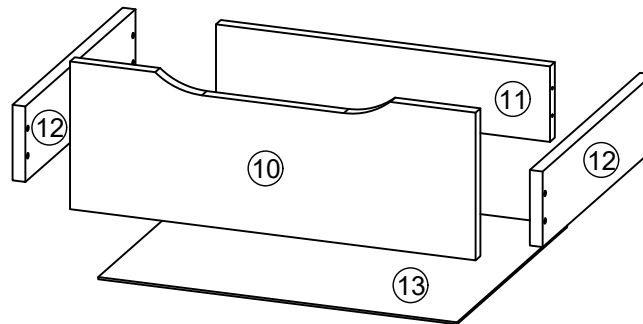
MODEL : SIMONA-ST 5448

Before you begin, please follow assembly instructions carefully, then follow them step by step.

Read instruction carefully . See Furniture Parts list and Hardware List for guidance . Be sure you have all parts before you start assembling . Place and assemble furniture on a clean flat soft surface , such as carpet or rug to prevent being scratched .

PART LIST		QTY
1	TOP PANEL	1 PC
2	BOTTOM PANEL	1 PC
3	SIDE PANEL (L)	1 PC
4	SIDE PANEL (R)	1 PC
5	BONE PANEL	2 PCS
6	BACK PANEL	1 PC
7	APRON BONE (FRONT)	1 PC
8	APRON BONE (BACK)	1 PC
9	APRON BONE	2 PCS
10	DRAWER FRONT	2 PCS
11	DRAWER BACK	2 PCS
12	DRAWER SIDE	4 PCS
13	DRAWER BOTTOM	2 PCS

HARDWARE					
A	MINI FIX	A1  A2  A3 		10 SETS	
B	M8 X 30MM WOOD DOWEL			24 PCS	
C	M6 X 50MM CSK CAP WOOD SCREW			6 PCS	
D	ALLEN KEY M4			1 PC	
E	M3.5 X 16MM C.B SCREW			24 PCS	
F	M4 X 38MM C.B SCREW			24 PCS	
G	5/8 NAIL			16 PCS	
H	5/8 PVC NAIL LEG			4 PCS	
I	14" DRAWER SLIDE	 I1 ( L/R ) I2 ( L/R )		2 SETS	



**SELF-PREPARED TOOLS:** Tools below are NOT included in package.



SCREWDRIVER



HAMMER

## Reminder:

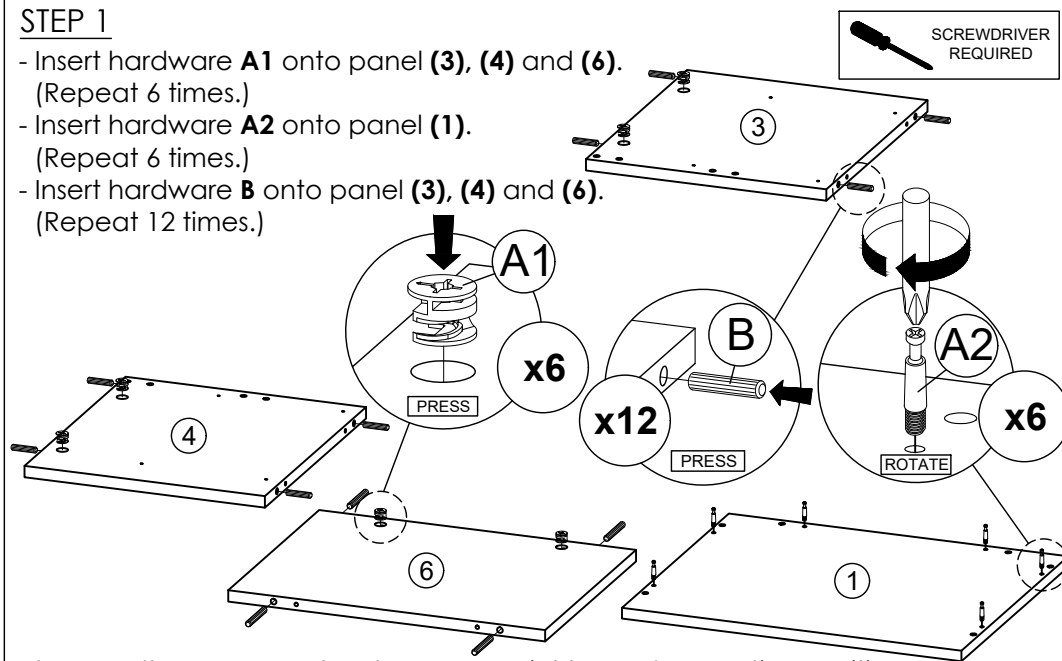
Please ensure that all surfaces and edges with colours/laminations are facing forward/outward.

# ASSEMBLY INSTRUCTIONS

PAGE: 2/4

## STEP 1

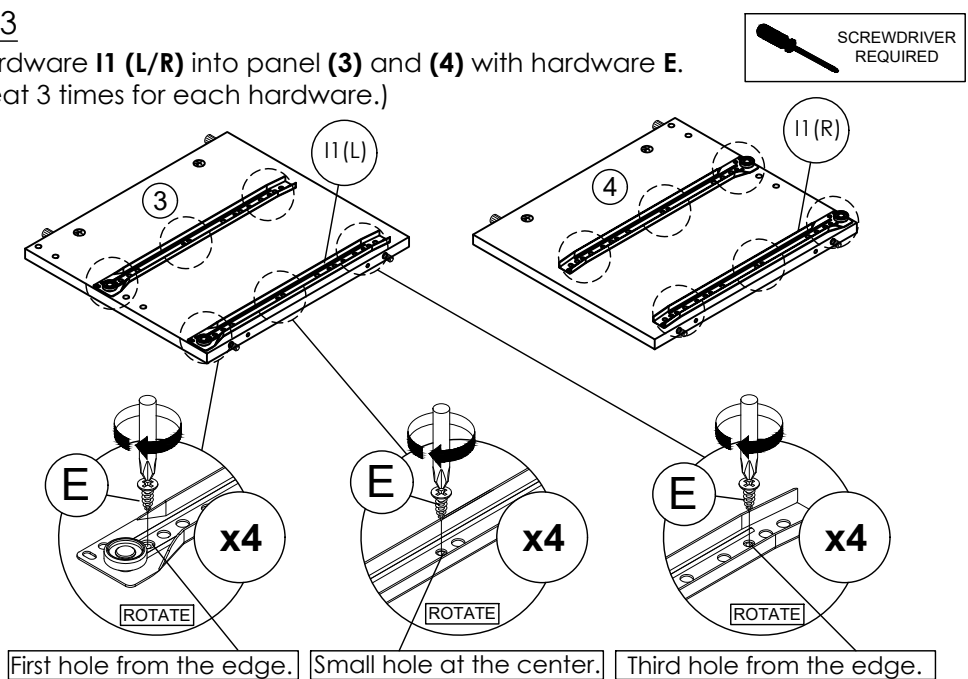
- Insert hardware **A1** onto panel (3), (4) and (6).  
(Repeat 6 times.)
- Insert hardware **A2** onto panel (1).  
(Repeat 6 times.)
- Insert hardware **B** onto panel (3), (4) and (6).  
(Repeat 12 times.)



\* Ensure the arrows on hardware **A1** point towards mounting positions.

## STEP 3

- Fix hardware **I1 (L/R)** into panel (3) and (4) with hardware **E**.  
(Repeat 3 times for each hardware.)

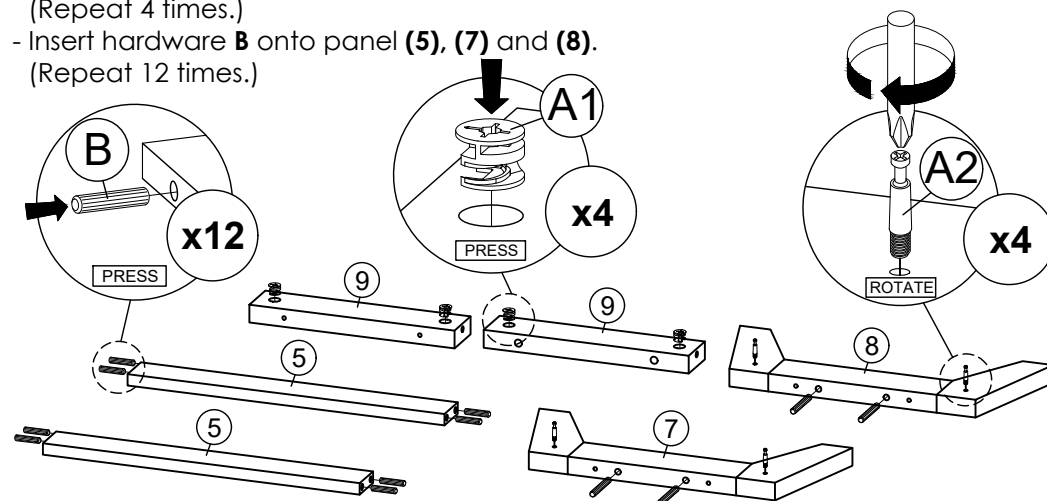


First hole from the edge. Small hole at the center. Third hole from the edge.

# MODEL : SIMONA-ST 5448

## STEP 2

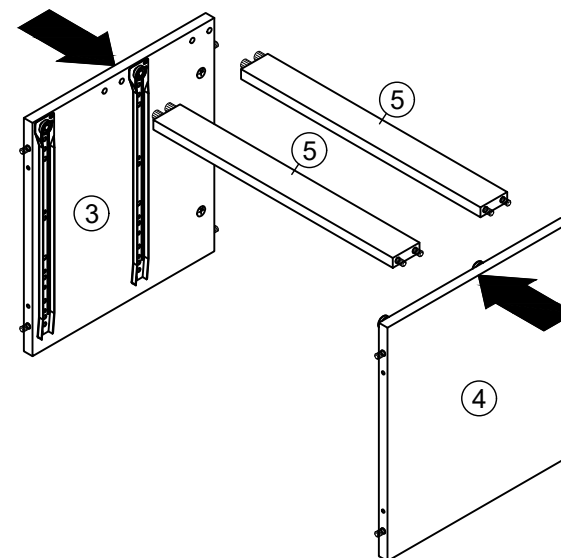
- Insert hardware **A1** onto panel (9).  
(Repeat 4 times.)
- Insert hardware **A2** onto panel (7) and (8).  
(Repeat 4 times.)
- Insert hardware **B** onto panel (5), (7) and (8).  
(Repeat 12 times.)



\* Ensure the arrows on hardware **A1** point towards mounting positions.

## STEP 4

- Attach panel (3) and (4) to panel (5).  
(Repeat 2 times.)



\* In this step hardware **B** are pre-inserted.

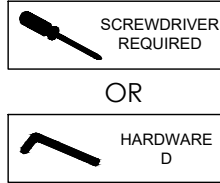
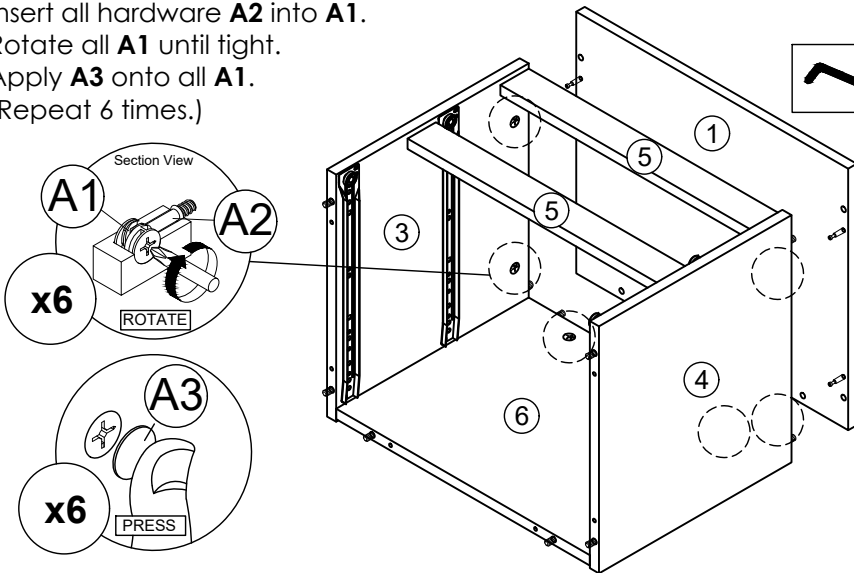
# ASSEMBLY INSTRUCTIONS

PAGE: 3/4

MODEL : SIMONA-ST 5448

## STEP 5

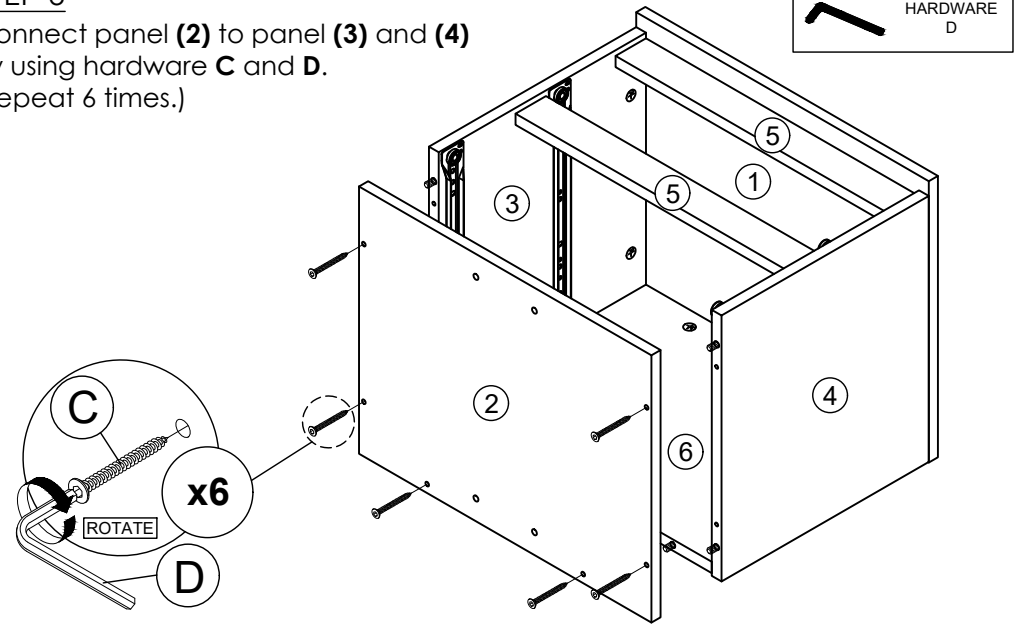
- Attach panel (1) to panel (3), (4) and (6).
- Insert all hardware A2 into A1.
- Rotate all A1 until tight.
- Apply A3 onto all A1.
- (Repeat 6 times.)



\* In this step hardware A1, A2 and B are pre-inserted.

## STEP 6

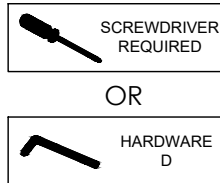
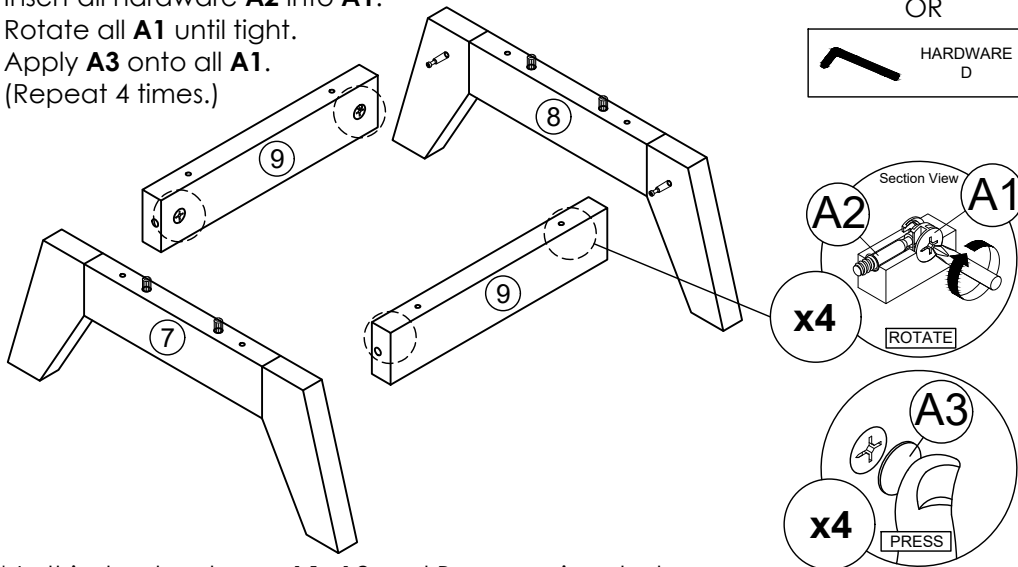
- Connect panel (2) to panel (3) and (4) by using hardware C and D.
- (Repeat 6 times.)



\* In this step hardware B are pre-inserted.

## STEP 7

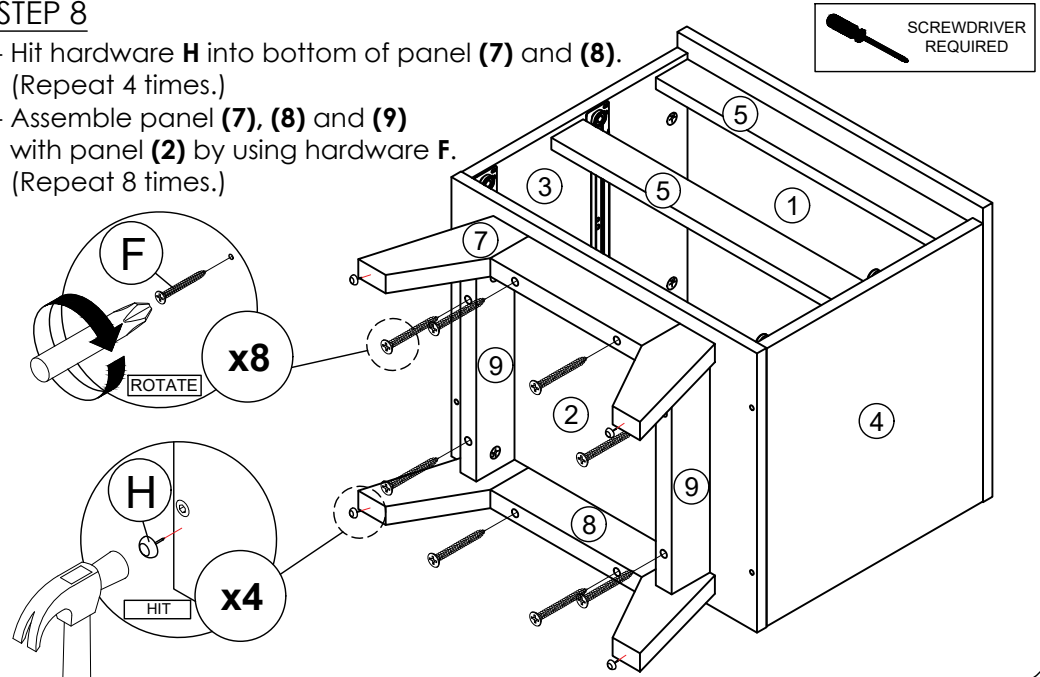
- Attach panel (7) and (8) to panel (9).
- Insert all hardware A2 into A1.
- Rotate all A1 until tight.
- Apply A3 onto all A1.
- (Repeat 4 times.)



\* In this step hardware A1, A2 and B are pre-inserted.

## STEP 8

- Hit hardware H into bottom of panel (7) and (8).
- (Repeat 4 times.)
- Assemble panel (7), (8) and (9) with panel (2) by using hardware F.
- (Repeat 8 times.)



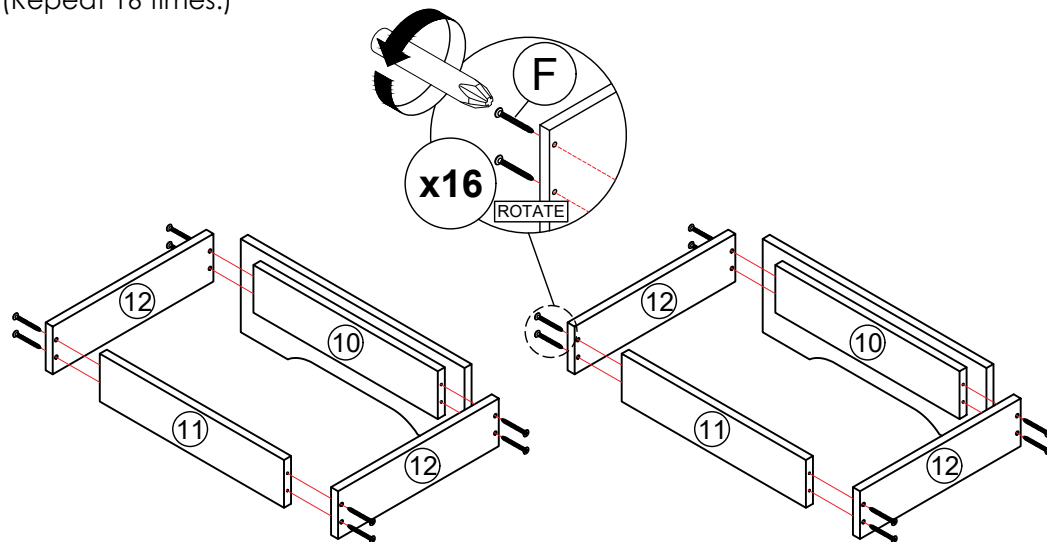
# ASSEMBLY INSTRUCTIONS

PAGE: 4/4

MODEL : SIMONA-ST 5448

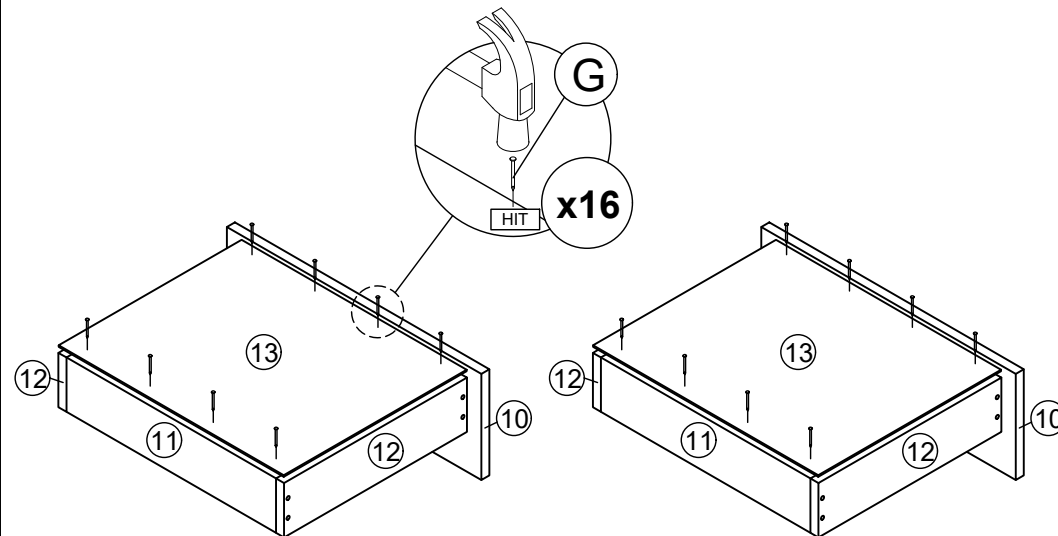
## STEP 9

Assemble panel (12) to panel (10) and (11) by using hardware F. (Repeat 16 times.)



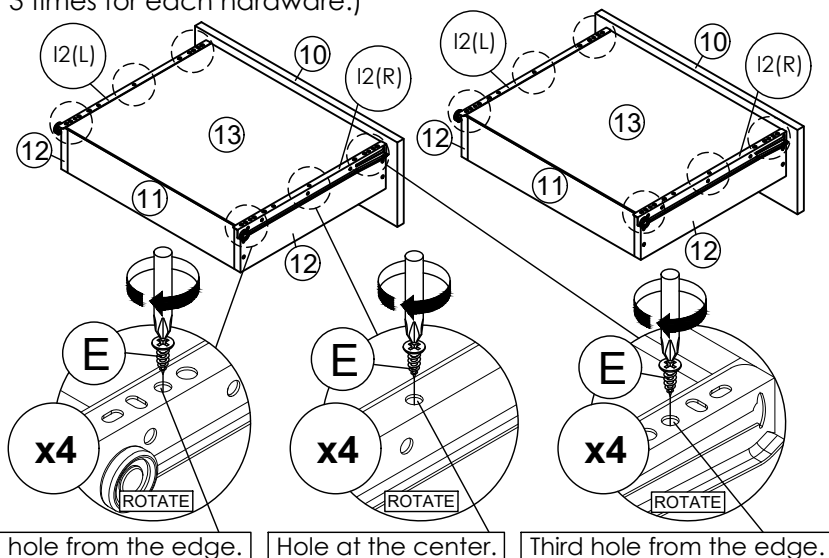
## STEP 10

Assemble panel (13) to entire body with hardware G. (Repeat 16 times.)



## STEP 11

Assemble hardware I2 (L/R) to panel (13) by using hardware G. (Repeat 3 times for each hardware.)



\*Hardware I2 (L/R) shall be leaning against panel (10) when assembling.

## STEP 12

Put all the drawer in place along the drawer slides.

